

Gippsland Vegetation Types: Ecological Vegetation Classes (EVC's)

EVC description derived from Davies et.al (2001) Ecological Vegetation Class Mapping at 1:25 000 in Gippsland.

EVC 55 Plains Grassy Woodland

An open, grassy eucalypt woodland in low rainfall areas occurring on fertile soils on flats and gently undulating plains at low elevations. The understorey consists of a few sparse shrubs over a species-rich grassy and herbaceous ground layer. Widespread and extensive in the past but has now been mainly cleared for agriculture, resulting in few intact weed-free remnants remaining in Gippsland.

Floristic Community 55-03 *Gippsland Plains Grassy Woodland*

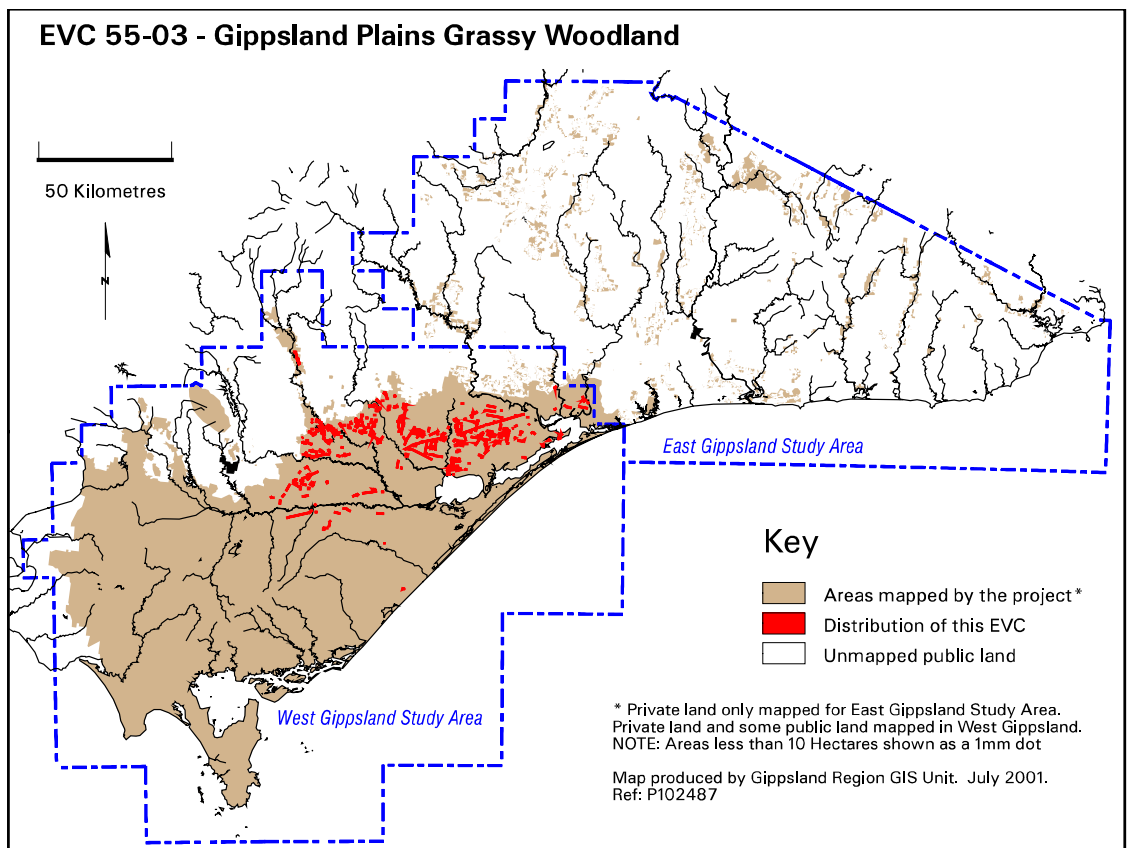


Gippsland Plains Grassy Woodland, Moormung Flora Reserve, south-west of Bairnsdale. Photo: John Davies 1999.

Elevation (metres above sea level)	<220
Average rainfall p.a. (mm)	<700
Topography	Undulating to flat plain. Can also occur on low hills formed from dissected gravel and clay deposits
Geology	Quaternary and Tertiary gravel, silt and clay deposits
Soils	Fertile, duplex consisting of sand and silt or loam over clay
Related/adjacent EVCs/FCs	<i>South Gippsland Plains Grassland, Damp Sands Herb-rich Woodland, South Gippsland Plains Grassy Forest, Box Ironbark Forest, Lowland Forest</i>
Present land use	Agriculture, nature conservation, recreation, minor forest produce
Present distribution	Gippsland plains from areas north of the Princes Highway such as Lake Glenmaggie and Briagolong to areas south of the highway, for example, Meerlieu and Moormung State Forest south-west of Bairnsdale with localised patches on Raymond Island
Examples of sites/quadrats/lists	“Strathfieldsaye” near Meerlieu (U23055), Forge Creek Reserve, south of Bairnsdale (U23018)
Total Area(ha)/ Number of polygons	5,650/417



Gippsland Plains Grassy Woodland, Seaton area. Photo: John Davies. 1999.



Vegetation: structure/floristics:

Gippsland Plains Grassy Woodland is typically dominated by Forest Red Gum *Eucalyptus tereticornis*. The understorey may include shrubs of Lightwood *Acacia implexa* which has one of the highest fidelity ratings of all species in this EVC, Creeping Bossiaea *Bossiaea prostrata* and Cranberry Heath *Astroloma humifusum*.

The ground layer is usually grassy and herbaceous with sedges and lilies also present. Frequent grasses are Weeping Grass *Microlaena stipoides* var. *stipoides*, Kangaroo Grass *Themeda triandra*, Stiped Wallaby-grass *Austrodanthonia racemosa* var. *racemosa*, Kneed Wallaby-grass *Austrodanthonia geniculata*, Purplish Wallaby-grass *Austrodanthonia tenuior*, *Poa* spp, and Veined Spear-grass *Austrostipa rudis*. The Common Bog-sedge, *Schoenus apogon*, is often present together with Yellow Rush-lily *Tricoryne elatior*, Twining Fringe-lily *Thysanotus patersonii* and Vanilla-lilies *Arthropodium* spp. Other species often present are the herbs Slender Bottle Daisy *Lagenophora gracilis*, Yellow Pennywort *Hydrocotyle foveolata*, Kidney-weed *Dichondra repens*, Star Cudweed *Euchiton involucratus*, Small Poranthera *Poranthera microphylla* and Trailing Speedwell *Veronica plebeia*. Narrow Rock Fern *Cheilanthes sieberi* is also sometimes present.

Comments:

Merges into Damp Sands Herb-rich Woodland as soil profiles become more sandy and probably slightly less fertile and seems to have its main distribution inland from the Gippsland Lakes.

This EVC would have been extensive in the past but today it is restricted to a few small remnant patches with large numbers of relict trees of Forest Red Gum *Eucalyptus tereticornis* across the plains with an introduced grassy or weedy understorey.

Gippsland species list including species frequency and fidelity.

- Fidelity:** Rating of faithfulness of a species to an EVC or Floristic Community.
Highest fidelity rating indicated by an "F" ie species only recorded in respective group.
- % Frequency:** Percentage occurrence of a species/taxa in an EVC or Floristic Community.
– **NB. Species highlighted in red are the most frequent and important.**
* = weed ie: non native.
- Rarity categories from NRE's Flora Information System (FIS).

EVC 55-03: GIPPSLAND PLAINS GRASSY WOODLAND

Lifeform	Scientific Name	Common Name	% Fr	F
Trees	<i>Eucalyptus tereticornis</i>	Forest Red Gum	85	33
Shrubs	<i>Bossiaea prostrata</i>	Creeping Bossiaea	58	9
	<i>Pimelea humilis</i>	Common Rice-flower	45	5
	<i>Astroloma humifusum</i>	Cranberry Heath	36	7
	<i>Acacia implexa</i>	Lightwood	30	179
	<i>Dillwynia cinerascens</i>	Grey Parrot-pea	15	10
Herbs	<i>Kunzea ericoides</i>	Burgan	15	2
	<i>Euchiton involucratus</i>	Star Cudweed	85	35
	<i>Oxalis perennans</i>	Grassland Wood-sorrel	82	51
	<i>Poranthera microphylla</i>	Small Poranthera	79	7
	<i>Veronica plebeia</i>	Trailing Speedwell	76	17
	<i>Dichondra repens</i>	Kidney-weed	76	2
	<i>Lagenophora gracilis</i>	Slender Bottle Daisy	67	20
	<i>Hypericum gramineum</i>	Small St John's Wort	67	5
	<i>Hydrocotyle laxiflora</i>	Stinking Pennywort	58	6
	<i>Cotula australis</i>	Common Cotula	48	7
	<i>Wahlenbergia gracilis</i>	Sprawling Bluebell	48	5
	<i>Crassula sieberiana</i>	Australian Stonecrop	42	7
	<i>Hydrocotyle foveolata</i>	Yellow Pennywort	39	66
	<i>Wahlenbergia gracilentia</i>	Annual Bluebell	36	16
	<i>Leptorhynchos linearis</i>	Shiny Buttons	33	39
	<i>Goodenia paniculata</i>	Branched Goodenia	30	30
<i>Asperula conferta</i>	Common Woodruff	27	27	
<i>Solenogyne dominii</i>	Smooth Solenogyne	24	57	
<i>Plantago gaudichaudii</i>	Narrow Plantain	24	11	

Lifeform	Scientific Name	Common Name	% Fr	F
	<i>Opercularia varia</i>	Variable Stinkweed	24	3
	<i>Viola betonicifolia</i>	Showy Violet	21	84
	<i>Wahlenbergia multicaulis</i>	Many-stemmed Bluebell	21	23
	<i>Senecio tenuiflorus</i>	Narrow Groundsel	21	18
	<i>Taraxacum</i> sp. aff. <i>brakellii</i>	Dandelion	18	215
	<i>Centrolepis strigosa</i>	Hairy Centrolepis	18	4
	<i>Acaena echinata</i>	Sheep's Burr	15	36
	<i>Stellaria multiflora</i>	Rayless Starwort	15	12
	<i>Ajuga australis</i>	Austral Bugle	15	5
	<i>Ranunculus sessiliflorus</i>	Annual Buttercup	15	5
	<i>Plantago debilis</i>	Shade Plantain	15	4
	<i>Centella cordifolia</i>	Centella	15	3
	<i>Geranium potentilloides</i>	Cinquefoil Cranesbill	15	0.8
	<i>Gonocarpus tetragynus</i>	Common Raspwort	15	0.5
Climbers	<i>Comesperma volubile</i>	Love Creeper	18	1
Ferns/Fern Allies	<i>Cheilanthes sieberi</i>	Narrow Rock Fern	36	29
	<i>Ophioglossum lusitanicum</i>	Austral Adder's-tongue	18	31
Sedges	<i>Schoenus apogon</i>	Common Bog-sedge	64	12
	<i>Carex breviculmis</i>	Short Stem-sedge	54	4
	<i>Gahnia radula</i>	Thatch Saw-sedge	48	2
	<i>Isolepis marginata</i>	Little Club-sedge	30	8
Other	<i>Lomandra filiformis</i>	Wattle Mat-rush	51	3
	<i>Lomandra longifolia</i>	Spiny-headed Mat-rush	30	0.9
	<i>Lomandra nana</i>	Dwarf Mat-rush	18	16
Rushes	<i>Juncus subsecundus</i>	Finger Rush	24	14
Lilies	<i>Tricoryne elatior</i>	Yellow Rush-lily	79	13
	<i>Arthropodium strictum</i>	Chocolate-lily	51	13
	<i>Thysanotus patersonii</i>	Twining Fringe-lily	45	41
	<i>Wurmbea dioica</i>	Common Early Nancy	42	26
	<i>Dianella</i>	Black-anther Flax-lily	21	1
	<i>brevicaulis/revoluta</i>			
	<i>Arthropodium minus</i>	Small Vanilla-lily	18	107
	<i>Hypoxis hygrometrica</i>	Golden Weather-glass	15	9
Grass-trees	<i>Xanthorrhoea minor</i> ssp. <i>lutea</i>	Small Grass-tree	18	2
Grasses	<i>Microlaena stipoides</i> var. <i>stipoides</i>	Weeping Grass	100	4
	<i>Austrodanthonia racemosa</i> var. <i>racemosa</i>	Stiped Wallaby-grass	88	22
	<i>Poa</i> sp.	Tussock Grass	73	1
	<i>Themeda triandra</i>	Kangaroo Grass	58	8
	<i>Austrostipa rudis</i>	Spear-grass	54	16
	<i>Austrodanthonia tenuior</i>	Purplish Wallaby-grass	51	38
	<i>Austrodanthonia setacea</i>	Bristly Wallaby-grass	45	4
	<i>Austrostipa rudis</i> ssp. <i>nervosa</i>	Veined Spear-grass	39	52
	<i>Agrostis avenacea</i>	Common Blown-grass	39	6
	<i>Elymus scaber</i> var. <i>scaber</i>	Common Wheat-grass	39	5
	<i>Austrodanthonia geniculata</i>	Kneed Wallaby-grass	36	215
	<i>Crassula decumbens</i>	Spreading Crassula	36	48
	<i>Austrostipa mollis</i>	Supple Spear-grass	24	57
	<i>Dichelachne crinita</i>	Long-hair Plume-grass	24	3
	<i>Austrostipa rudis</i> ssp. <i>australis</i>	Veined Spear-grass	21	251
	<i>Deyeuxia quadriseta</i>	Reed Bent-grass	21	3
	<i>Austrodanthonia caespitosa</i>	Common Wallaby-grass	18	11
	<i>Austrostipa pubinodis</i>	Tall Spear-grass	15	16
	<i>Notodanthonia semiannularis</i>	Wetland Wallaby-grass	15	8
	<i>Pentapogon quadrifidus</i>	Five-awned Spear-grass	15	5
Weeds	* <i>Hypochoeris radicata</i>	Cat's Ear	91	2

Lifeform	Scientific Name	Common Name	% Fr	F
*	<i>Leontodon taraxacoides</i>	Hairy Hawkbit	70	11
*	<i>Gamochaeta purpurea</i> spp. agg.	Cudweed	61	24
*	<i>Hypochoeris glabra</i>	Smooth Cat's Ear	58	28
*	<i>Briza minor</i>	Lesser Quaking-grass	51	12
*	<i>Anagallis arvensis</i>	Pimpernel	45	4
*	<i>Centaureum erythraea</i>	Common Centaury	42	2
*	<i>Galium murale</i>	Small Bedstraw	33	66
*	<i>Soliva sessilis</i>	Jo Jo	24	287
*	<i>Vulpia myuros</i>	Rat's-tail Fescue	24	48
*	<i>Cirsium vulgare</i>	Spear Thistle	24	1
*	<i>Cerastium glomeratum</i>	Common Mouse-ear Chickweed	21	4
*	<i>Trifolium dubium</i>	Suckling Clover	18	6
*	<i>Romulea rosea</i> var. <i>australis</i>	Common Onion-grass	15	5
*	<i>Sonchus asper</i>	Rough Sow-thistle	15	2
*	<i>Sonchus oleraceus</i>	Sow-thistle	15	1