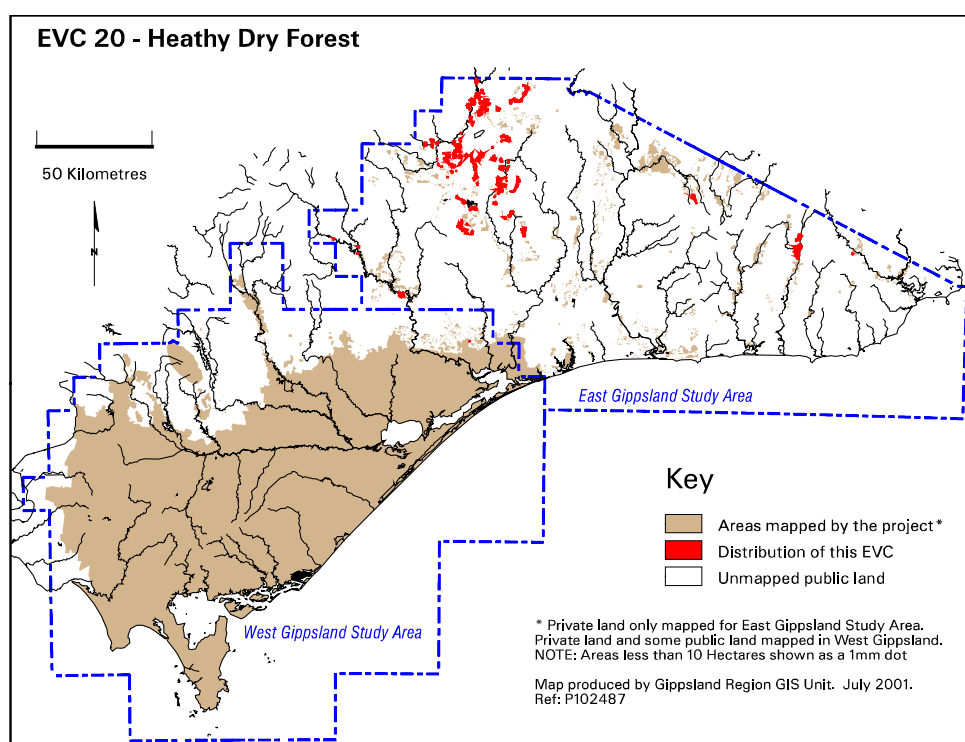


EVC 20 Heathy Dry Forest

The overstorey is often low in height, poor in form with an open crown cover and may be woodland-like in appearance. The understorey is dominated by a low, sparse to dense layer of ericoid-leaved shrubs including heaths and peas.

Elevation (metres above sea level)	A range of elevations to sub-montane levels
Average rainfall p.a. (mm)	700-1300. Low effective rainfall
Topography	Exposed, steep north and north-western slopes
Geology	Ordovician
Soils	Shallow, often rocky soils
Related/adjacent EVCs/FCs	Shrubby Dry Forest, Grassy Dry Forest
Present land use	Nature conservation, recreation, timber harvesting
Present distribution	See map below
Examples of sites/quadrats/lists	Areas around Brookville, Mt. Leinster, off Swifts Creek-Omeo Road at Cassilis and Tongio West, and off Monaro Highway at Chandlers Creek.
Total Area (ha)/ Number of polygons	6,167/290
Group analysis no.	Not available for East Gippsland Study Area



Vegetation: structure/floristics:

This EVC occurs on exposed aspects and ridge-tops in areas where rainfall is less than 1000mm p.a. Characteristic overstorey species include Broad-leaved Peppermint *Eucalyptus dives*, Red Stringybark *E. macrorhyncha* and Yertchuck *E. consideniana*. Silver Wattle *Acacia dealbata* is a common and usually dominant feature in the understorey treelayer. The understorey of mainly ericoid shrubs is generally low in height and commonly includes Peach Heath *Lissanthe strigosa* ssp. *subulata*, Prickly Broom-heath *Monotoca scoparia*, Daphne Heath *Brachyloma daphnoides* and Urn Heath *Melichrus urceolatus*.

Graminoids are generally sparse in Heathy Dry Forest with Kangaroo Grass *Themeda triandra*, Silvertop Wallaby-grass *Joycea pallida*, Grey Tussock-grass *Poa sieberiana*, Grass Trigger-plant *Stylidium graminifolium* and Spiny-headed Mat-rush *Lomandra longifolia* being some of the more frequently occurring species.