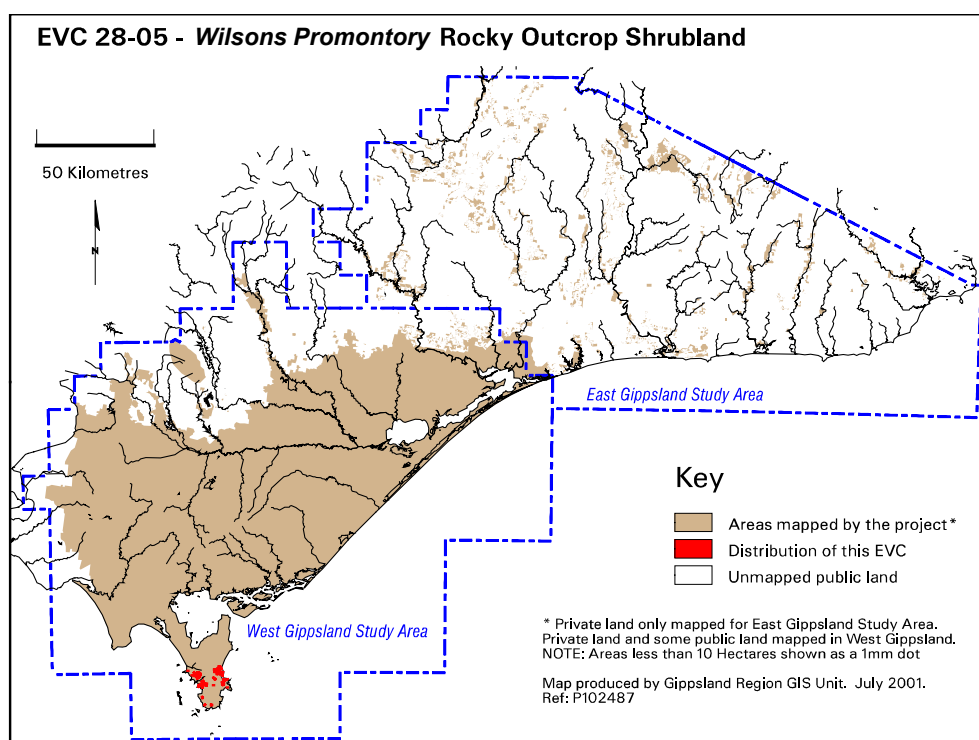


EVC 28 Rocky Outcrop Shrubland

Occurs in areas of low site quality on exposed rocky outcrops where bedrock is a dominant landform feature, soils are shallow or absent and effective rainfall is low. Scattered, stunted trees are occasionally present. A low shrub layer characterises this EVC, including a number of species indicative of rocky outcrops. The ground layer is usually sparse and species-poor. The habitat often supports localised occurrence of rare plant species due to specialised conditions.

Floristic Community 28-05 *Wilson's Promontory Rocky Outcrop Shrubland*

Elevation (metres above sea level)	<500
Average rainfall p a. (mm)	900-1000
Topography	Rocky crests and associated slopes
Geology	Devonian granite
Soils	Variable, such as skeletal gravelly sand in rock crevices on granite
Related/adjacent EVCs/FCs	<i>Blores Hill</i> Rocky Outcrop Shrubland, <i>Wilson's Promontory</i> Granitic Hills Woodland, <i>Granitic Coastal Headland Scrub</i> (seaward), Lowland Forest
Present land use	Nature conservation, recreation
Present distribution	Confined to major granite outcrops, Wilson's Promontory National Park
Examples of sites/quadrats/lists	Mt Bishop (F48757) (F48758), Mt Oberon (F48801)
Total Area (ha)/ Number of polygons	225/93
Group analysis no.	Subset of Prom. Group 18 (Appendix 5)



Vegetation: structure/floristics:

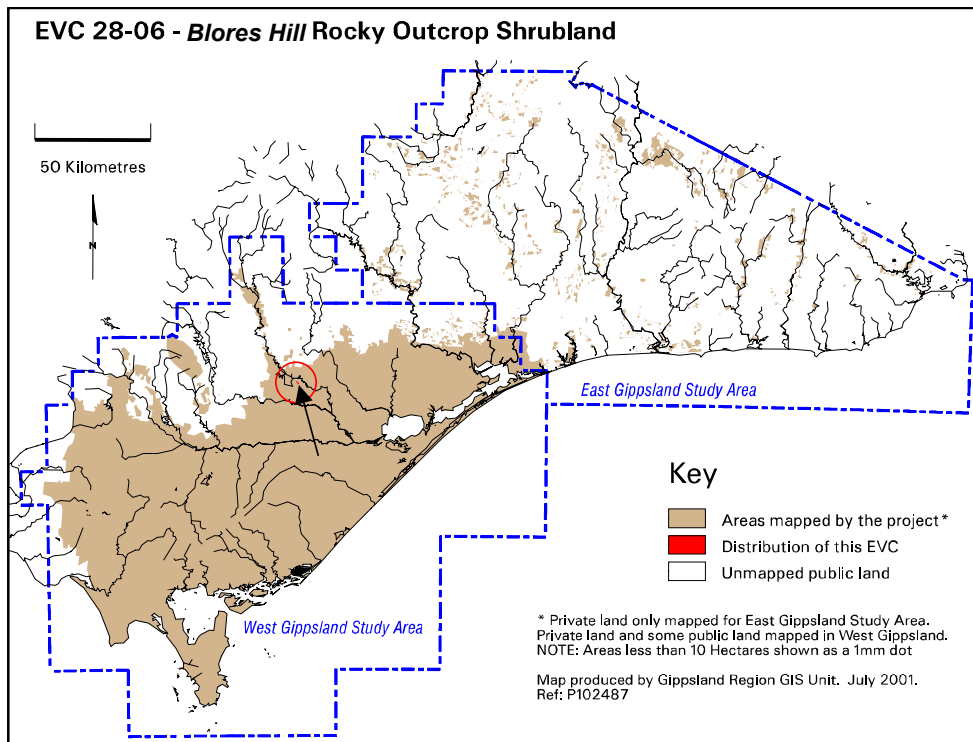
The vegetation is typically dominated by White Kunzea *Kunzea ambigua* but also includes Lemon Bottlebrush *Callistemon pallidus*, Dusty Miller *Spyridium parvifolium*, Satin Everlasting *Helichrysum leucopsidium*, Large-leaf Bush-pea *Pultenaea daphnoides*, Common Heath *Epacris impressa*, Common Correa *Correa reflexa*, Silver Banksia *Banksia marginata* and Prickly Tea-tree *Leptospermum continentale*. Necklace fern *Asplenium flabellifolium* is a good indicator of crevices in the rocky substrate.

Comments:

Wilson's Promontory Rocky Outcrop Shrubland has been described by Ashton & Webb (1977).

Floristic Community 28-06 Blores Hill Rocky Outcrop Shrubland

Elevation (metres above sea level)	160
Average rainfall p a. (mm)	600. Low effective rainfall
Topography	Crest
Geology	Outcropping conglomerate (cemented Tertiary gravel deposits)
Soils	Skeletal or absent
Related/adjacent EVCs/FCs	Box Ironbark Forest, Lowland Forest, <i>Wilson's Promontory Rocky Outcrop Shrubland</i>
Present land use	Nature conservation, recreation.
Present distribution	Highly localised area on Blores Hill (just east of Lake Glenmaggie)
Examples of sites/quadrats/lists	U23900
Total Area (ha)/ Number of polygons	<1/1
Group analysis no.	Not identified by 40 group analysis

**Vegetation: structure/floristics:**

Blores Hill Rocky Outcrop Shrubland is characterised by its lower stature than the surrounding Lowland Forest/Box Ironbark Forest. A low shrub layer is also characteristic and includes Shiny Cassinia *Cassinia longifolia*, Black Wattle *Acacia mearnsii*, Purple Coral-pea *Hardenbergia violacea*, the rare Dwarf Zieria *Zieria cytisoides* and Daphne Heath *Brachyloma daphnoides*. Nodding Blue-lily *Stypandra glauca* is also present.

Species indicative of the rocky substrate include Rock Isotome *Isotoma axillaris*, Necklace Fern *Asplenium flabellifolium*, Green Rock-fern *Cheilanthes austrotenuifolia*, the drought susceptible species Pink Purslane *Calandrinia calyptrata*, Nodding Saltbush *Einadia nutans* ssp. *nutans* and the rare Tall Vanilla-lily *Arthropodium* sp 1.

Comments:

Presently subject to soil disturbance due to trail bike activity.

This description for *Blores Hill* Rocky Outcrop Shrubland was based only on the sampling site mentioned in the above table.