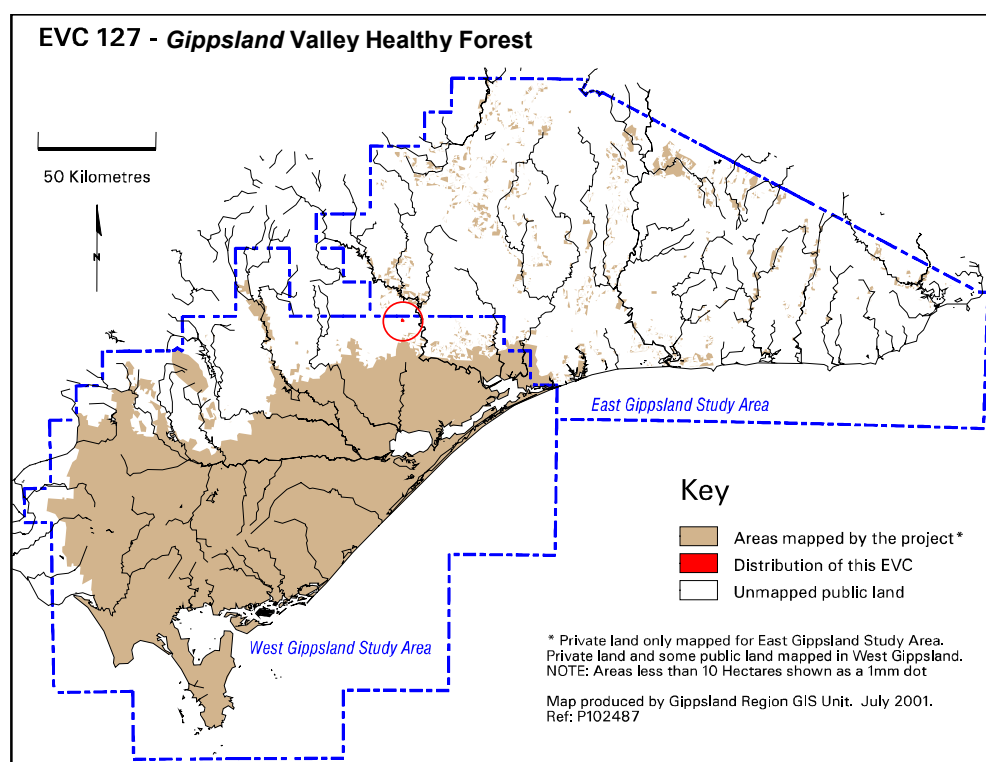


EVC 127 Valley Heathy Forest

Description below is from Gippsland RFA (Commonwealth of Australia and NRE, 1999) and additional information from East Gippsland study area mapping.

Floristic Community 127-01 Gippsland Valley Heathy Forest

Elevation (metres above sea level)	300-400
Average rainfall p.a. (mm)	Not available
Topography	Gentle slopes
Geology	Ordovician sandstones and Silurian granitoids
Soils	Duplex, clayey-sands overlying heavy clays
Related/adjacent EVCs/FCs	Not available
Present land use	Timber production, nature conservation
Present distribution	South of Castlburn at Cobbannah Creek, east of Ensay near Wilkinson Creek
Examples of sites/quadrats/lists	'Treasures' near Cobbannah Creek
Total Area (ha)/ Number of polygons	24/2
Group analysis no.	Not available for East Gippsland Study Area



Vegetation: structure/floristics:

Valley Heathy Forest forms a low forest to woodland, where Broad-leaved Peppermint *Eucalyptus dives*, Red Stringybark *E. macrorhyncha* and Brittle Gum *E. mannifera* form the overstorey and Blackwood *Acacia melanoxylon* grows commonly as an understorey tree. At 'Treasures' the overstorey also includes Red Box *E. polyanthemos* ssp. *vestita* and But But *E. bridgesiana*. Pale-fruit Ballart *Exocarpos strictus* occurs as a tall shrub.

The mid stratum is dominated by shorter heathy shrubs characteristic of this EVC. Species include Small-leaf Parrot-pea *Dillwynia phyllicoides*, Trailing Podolobium *Podolobium procumbens*, Common Heath *Epacris impressa*, Cranberry Heath *Astroloma humifusum* and Honey-pots *Acrotriche serrulata* under a scattering of taller shrubs including Shiny Cassinia *Cassinia longifolia*, Prickly Bush-pea *Pultenaea forsythiana* and Prickly Broom-heath *Monotoca scoparia*. At 'Treasures' the shrub layer

includes Prickly Tea-tree *Leptospermum continentale*, Ploughshare Wattle *Acacia gunnii* and Hop Bitter-pea *Daviesia latifolia*.

Atypical of other heathy EVCs, Valley Heathy Forest carries a diversity of lilies, grasses and forbs in the ground layer. In addition, seasonal wetness of the soils provides habitat for species such as Tasman Flax-lily *Dianella tasmanica* and Common Bog-sedge *Schoenus apogon*. Common species in the ground layer include *Lagenophora* spp., Grey Tussock-grass *Poa sieberiana*, Kangaroo Grass *Themeda triandra*, Weeping Grass *Microlaena stipoides* var. *stipoides*, Bordered Panic *Entolasia marginata*, Wallaby Grasses *Austrodanthonia* spp. and Plume Grasses *Dichelachne* spp. A high diversity of orchids is seasonally present.