

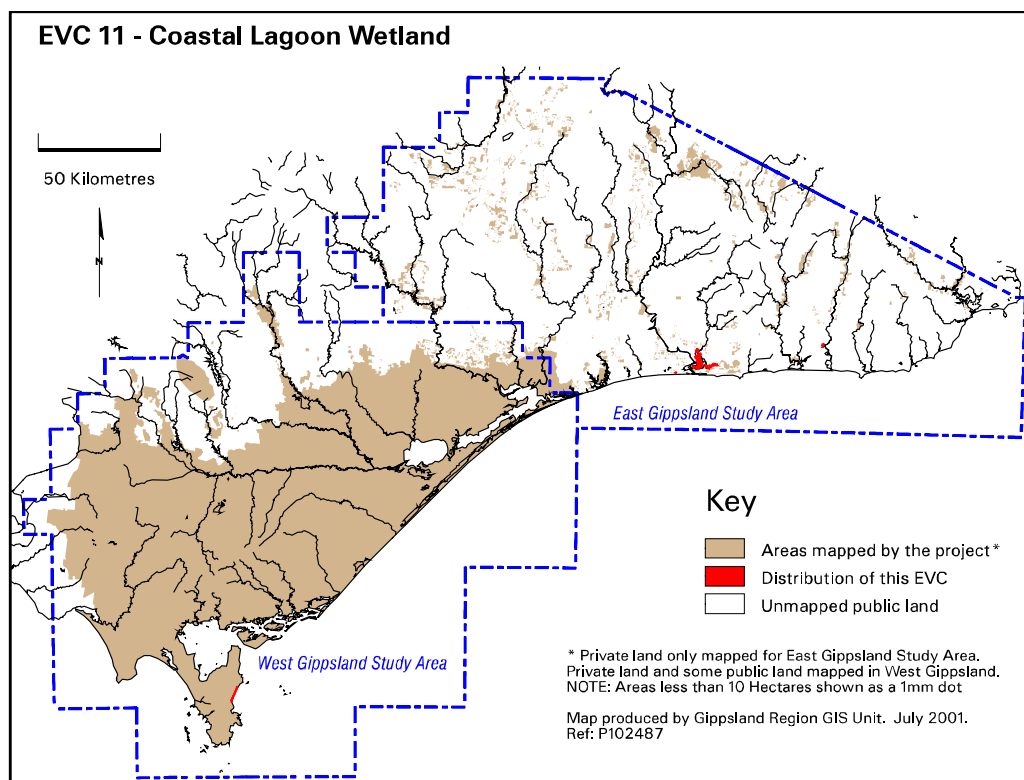
Gippsland Vegetation Types: Ecological vegetation Classes (EVC's)

EVC description derived from Davies et.al (2001) Ecological Vegetation Class Mapping at 1:25 000 in Gippsland.

EVC 11 Coastal Lagoon Wetland

Occupies the margins of coastal freshwater lagoons that have formed behind the coastal dune barrier and the adjacent hills. It has several zones dependent upon water depth and persistence of inundation. Within the lagoon itself where exposure is rare, the vegetation is dominated by graminoids whereas on the lagoon margin tall scrub is common.

Elevation (metres above sea level)	At or around sea-level
Average rainfall p.a. (mm)	900
Topography	Coastal freshwater lagoons formed behind the coastal dune barrier and adjacent hills
Geology	Quaternary deposits
Soils	Humus-rich sand and silt that are inundated for most of the year
Related/adjacent EVCs/FCs	Wetland Formation
Present land use	Mainly nature conservation, recreation
Present distribution	South of Cann River near Flynn's Creek Track (East Gippsland), East Gippsland and Wilsons Promontory National Park)
Examples of sites/quadrats/lists	Five Mile Beach area, Wilsons Promontory (F48783, F22835)
Total Area(ha)/ Number of polygons	950/18



Vegetation: structure/floristics:

The description below is from Woodgate *et al.* (1994).

Several zones dependent upon water depth and persistence of inundation. Within the lagoon itself where exposure is rare, the dominant species are Tall Spike-sedge *Eleocharis sphacelata*, Water-ribbons *Triglochin procerum* spp.

agg. and Soft Twig-rush *Baumea rubiginosa*. On the more frequently exposed lagoon margin the species diversity increases and may include such species as Jointed Twig-rush *Baumea articulata*, Leafy Twig-rush *Cladium procerum*, Running Marsh-flower *Villarsia reniformis*, Swamp Club-sedge *Isolepis inundata*, and Common Reed *Phragmites australis*. On the lagoon margin the vegetation begins to merge into Riparian Scrub as indicated by the presence of Swamp Paperbark *Melaleuca ericifolia*, Scented Paperbark *M. squarrosa*, Tall Saw-sedge *Gahnia clarkei* and Forest Bindweed *Calystegia marginata*. Scrambling Coral-fern *Gleichenia microphylla* often scrambles through this scrub.

Comments:

Mainly found at Wilsons Promontory although there are isolated occurrences in East Gippsland such as Lake Barracouta, Lake Wau Wauka east of Mallacoota and the lagoons south of the Marlo Aerodrome.

Coastal Lagoon Wetland is closely related to Wetland Formation and a future comprehensive wetland classification project may clarify its status.

Species list including species frequency and fidelity.

Fidelity: Rating of faithfulness of a species to an EVC or Floristic Community. Highest fidelity rating indicated by an “F” ie species only recorded in respective group.

% Frequency: Percentage occurrence of a species/taxa in an EVC or Floristic Community – **NB. Species highlighted in red are the most frequent and important.**

PROM. EVC 11: COASTAL LAGOON WETLAND

Species	% Frequency	Fidelity
<i>Eleocharis sphacelata</i>	100.00	310.00
<i>Triglochin procerum</i> s.l	100.00	38.75
<i>Phragmites australis</i>	50.00	34.44