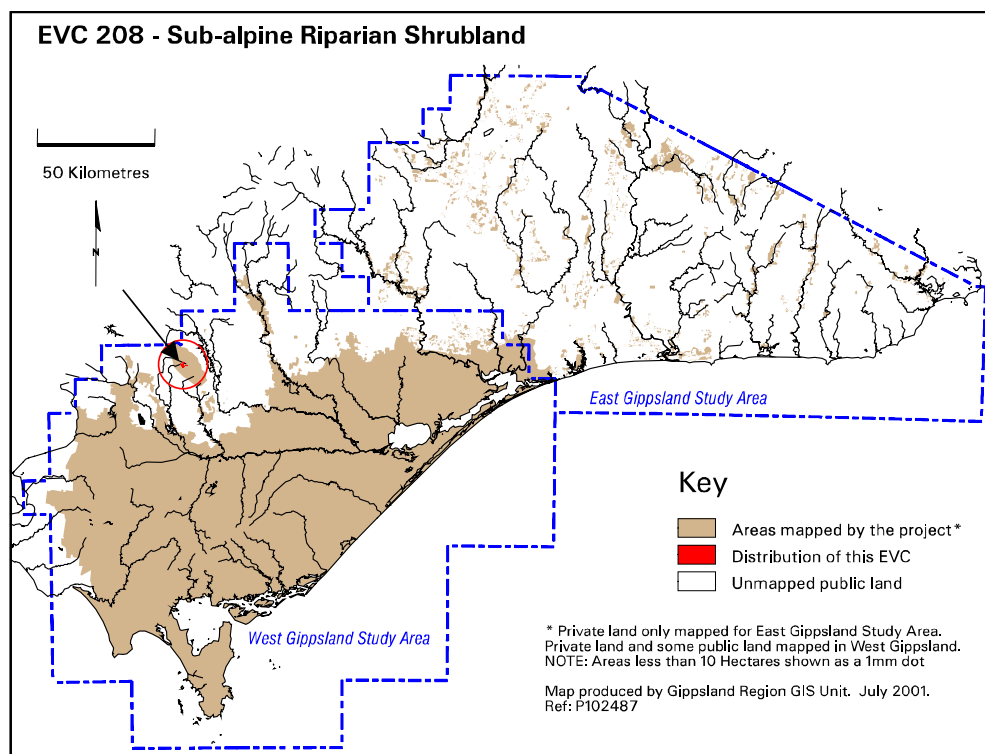


EVC 208 Sub-alpine Riparian Shrubland

Develops in narrow strips along deep sub-alpine creeks in treeless areas that are prone to disturbance by periodic flooding and intensive grazing by native animals. Ranges from a closed heath through to open shrubland and even grassland.

Description below is from Davies (unpublished).

Elevation (metres above sea level)	1300-1500
Average rainfall p a. (mm)	1900-2000
Topography	Flats which are prone to disturbance by periodic flooding
Geology	Granodiorite/Quaternary deposits
Soils	Range from a deep uniform textured gravelly sand to a deep organic loam
Related/adjacent EVCs/FCs	Sub-alpine Wet Heathland, Sub-alpine Shrubland, Fen
Present land use	Nature conservation, recreation, water catchment
Present distribution	Baw Baw plateau
Examples of sites/quadrats/lists	The Morass (F48867, F48868)
Total Area (ha)/ Number of polygons	7/4
Group analysis no.	Not available



Vegetation: structure/floristics:

Ranges in structure from closed heath through to open shrubland and even localised grassland where heavily grazed "marsupial lawn" develops. These areas contain a characteristic undulating micro-topography of grassy humps interspersed with heath. The former are notoriously herb-rich in composition and contrast with the more depauperate closed heath. The common grass is Soft Snow-grass *Poa hiemata*. Common herbs are Willow Herb *Epilobium* spp, Derwent Speedwell *Derwentia derwentiana*, Cinquefoil Cranesbill *Geranium potentilloides*, Strawberry Buttercup *Ranunculus collinus* and the sedges *Carex blakei* and Fen Sedge *Carex gaudichaudiana*. Common shrubs are Scaly Everlasting *Ozothamnus hookeri* and Alpine Grevillea *Grevillea australis*.

Comments:

Sub-alpine Riparian Shrubland merges into Sub-alpine Wet Heathland on poor drainage flats away from the river course where soils tend to be more acidic peats and where Candle Richea *Richea continentis*, Spreading Rope-rush *Empodisma minus* and the moss *Sphagnum cristatum* dominate. The EVC merges into Dry Sub-alpine Shrubland on lower slopes where well-drained yellow-brown loams fringe the Sub-alpine Woodland. It also merges into Fen on major flats where cold air drainage conditions are extreme.