

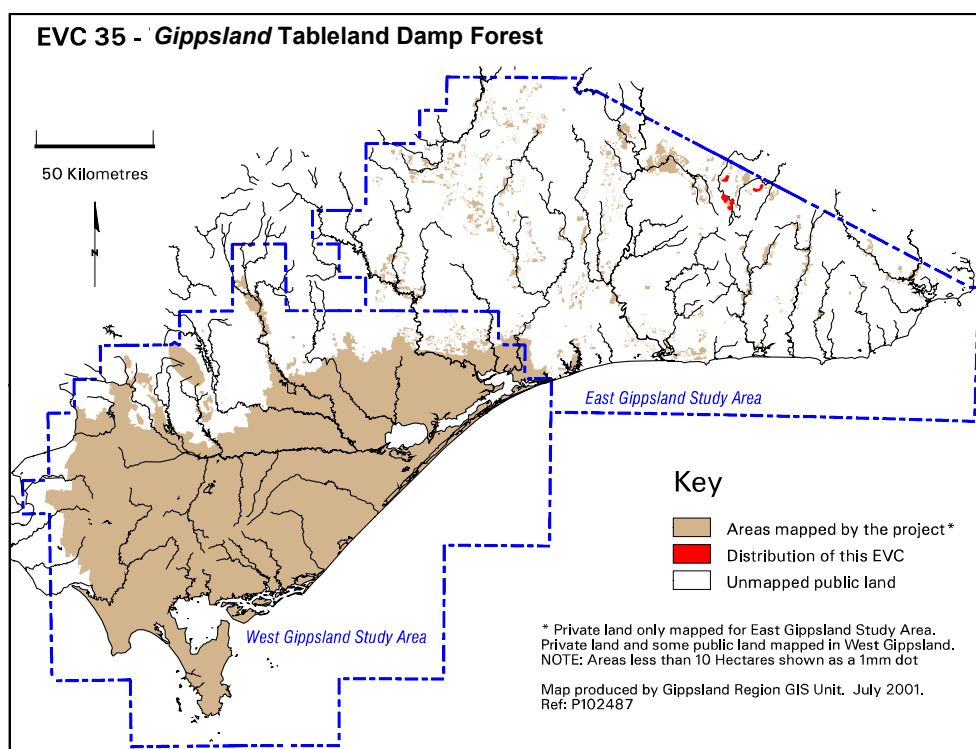
## EVC 35 Tableland Damp Forest

Occurs on topographically protected south-facing slopes of gentle topography on the southern edge of the Monaro Tableland and elsewhere in Gippsland, and occasionally in gully heads on northern or western slopes in low relief montane areas. Geology is marine sediments of Ordovician age and soils are shallow to moderately deep, with a well-developed humus layer and abundant leaf litter. Overstorey is characteristically a tall eucalypt forest with a distinctive understorey dominated by a tall, diverse shrub layer of broad-leaved shrubs and heaths with sometimes a scattering of tree-ferns. The ground layer is dominated by a variety of forbs and graminoids. This EVC occupies the niche between Wet Forest and Dry Montane Woodland.

Description below is from Commonwealth of Australia and NRE, (1999).

### Floristic Community 35-02 *Gippsland Tableland Damp Forest*

<b>Elevation (metres above sea level)</b>	1200
<b>Average rainfall p.a. (mm)</b>	1200
<b>Topography</b>	South-facing slopes and occasionally in gully heads on northern or western slopes. Most sites are topographically protected from wind and direct sunlight by frequent cloud cover
<b>Geology</b>	Ordovician sediments
<b>Soils</b>	Shallow to moderately deep, with a well-developed humus layer and abundant leaf litter
<b>Related/adjacent EVCs/FCs</b>	Wet Forest, Montane Dry Woodland
<b>Present land use</b>	Nature conservation, recreation
<b>Present distribution</b>	Around Mt Baldhead and on the headwaters of the Avon River and Bendoc area in East Gippsland
<b>Total Area (ha)/ Number of polygons</b>	389/10
<b>Examples of sites/quadrats/lists</b>	Not available for East Gippsland Study Area



**Vegetation: structure/floristics:**

The overstorey is almost always dominated by Alpine Ash *Eucalyptus delegatensis*. Gippsland Peppermint *E. croajingolensis* and Mountain Gum *E. dalrympleana* occur as sub-dominant trees. Silver Wattle *Acacia dealbata* is a common and often dominant feature of the understorey tree layer.

The shrub stratum is diverse and, depending on its disturbance history will vary in dominance, abundance and density. Rough Coprosma *Coprosma hirtella*, Dusty Daisy-bush *Olearia phlogopappa* and Elderberry *Panax Polyscias sambucifolia* are common and form the bulk of the shrub layer. Long unburnt sites commonly carry Alpine Pepper *Tasmannia xerophila*, Drooping Beard-heath *Leucopogon gelidus* and Mountain Beard-heath *L. hookeri* as co-dominants. More recently burnt sites may have an almost complete layer of Hop Bitter-pea *Daviesia latifolia* (some tree-form) or Mountain Hickory Wattle *Acacia obliquinervia*. More open or exposed sites contain Alpine Podolobium *Podolobium alpestre*, Gorse Bitter-pea *Daviesia ulicifolia* and Cluster-flower Geebung *Persoonia confertiflora*. Many of the common shrubs are bird-dispersed.

The understorey carries a scattering of tree-ferns. In the wettest sites, there may be a total ground cover of Mother Shield-fern *Polystichum proliferum* intermingled with Forest Starwort *Stellaria flaccida* and few smaller shrubs.

Gippsland Tableland Damp Forest is diverse in forbs and graminoids. These include the 'broad-leaved' Tussock-grasses, notably Sword Tussock-grass *Poa ensiformis*, in addition to Tasman Flax-lily *Dianella tasmanica*, Derwent Speedwell *Derwentia derwentiana* and many shade-tolerant species such as Bidgee Widgee *Acaena novae-zelandiae*, Mountain Cotula *Leptinella filicula*, Common Bottle-daisy *Lagenophora stipitata* and Ivy-leaf Violet *Viola hederacea*.

**Comments:**

This EVC contains species characteristic of dry montane woodlands from higher elevations and of wetter forest communities downslope.