

Gippsland Vegetation Types: Ecological Vegetation Classes (EVC'S)

EVC description derived from Davies et.al (2001) Ecological Vegetation Class Mapping at 1:25 000 in Gippsland.

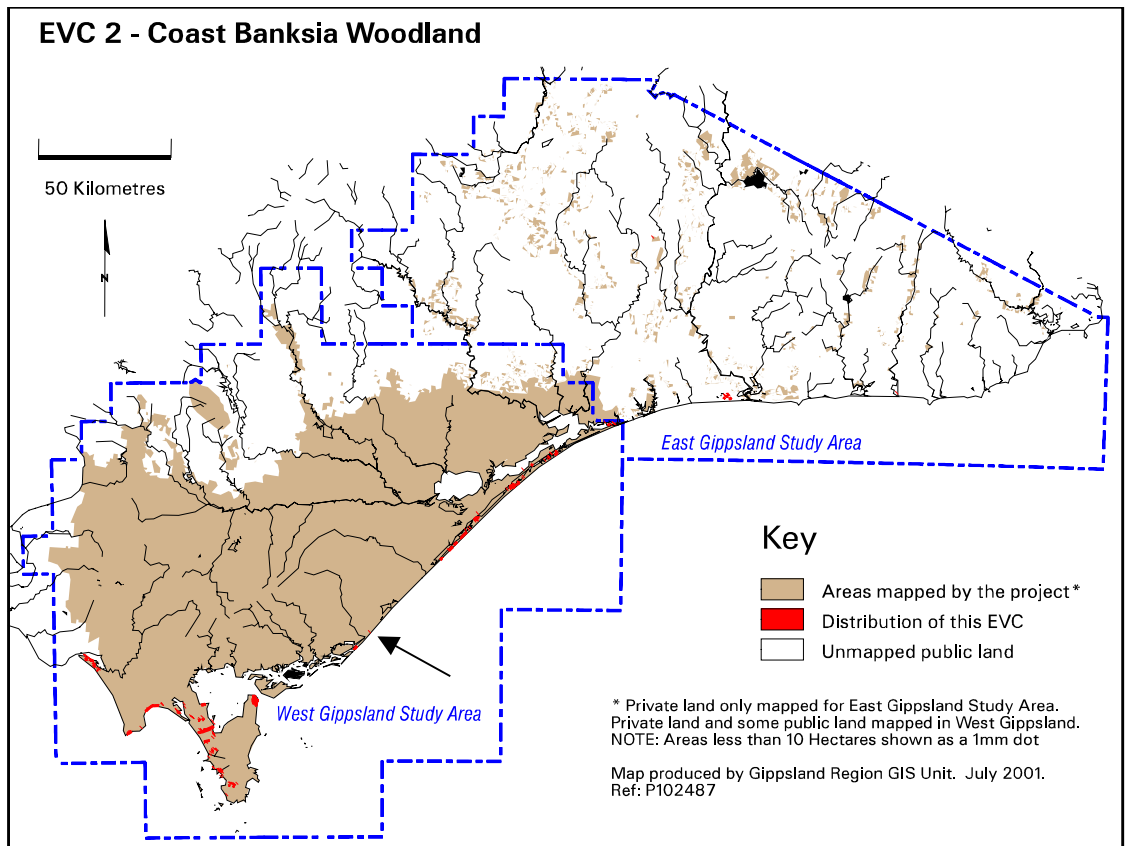
EVC 2 Coast Banksia Woodland

Restricted to coastal or near coastal localities inland behind secondary or tertiary dunes or on sand sheets inland from Coastal Dune Scrub Mosaic. Usually dominated by an overstorey of Coast Banksia *Banksia integrifolia* var. *integrifolia* over tall shrubs of Coast Tea-tree *Leptospermum laevigatum*. Scramblers such as Bower Spinach *Tetragonia implexicoma* are common in the understorey with a groundcover of grasses, herbs and sedges.



Coast Banksia Woodland on Rigby Island, Gippsland Lakes. Photo: John Davies 1996.

Elevation (metres above sea level)	<30
Rainfall average p.a. (mm)	<1000
Topography	Secondary or tertiary dunes or sand sheets further inland
Geology	Quaternary sand deposits
Soils	Deep calcareous sand/loamy sand with a higher organic content and greater soil horizon development than Coastal Dune Scrub Mosaic
Related/adjacent EVCs/FCs	Coastal Dune Scrub Mosaic (seaward), Damp Sands Herb-rich Woodland (inland), Limestone Box Forest
Present land use	Nature conservation, recreation, residential development, agriculture
Present distribution	Behind Ninety Mile Beach, Yanakie Isthmus, Wilsons Promontory National Park, Waratah Bay, Anderson Inlet
Examples of sites/quadrats/lists	Rigby Island, The Lakes National Park (U23172), Gippsland Lakes Coastal Park:(U23154), Wilsons Promontory National Park: east of Mount Singapore (F22614) and south of Little Oberon (U23647)
Total Area(ha)/ Number of polygons	1,479/148



Vegetation: structure/floristics:

The dominant tree/tall shrub is Coast Banksia *Banksia integrifolia* var. *integrifolia*, a good indicator species for this EVC. A tall shrub layer is present which may include Sallow Wattle *Acacia longifolia* var. *sophorae*, Common Boobiella *Myoporum insulare* and Coast Tea-tree *Leptospermum laevigatum* of varying density as well as Swamp Paperbark *Melaleuca ericifolia* which is typically found in adjoining poorly drained sites that support Estuarine Wetland, Swamp Scrub or Riparian Scrub.

When Coast Tea-tree *Leptospermum laevigatum* is not predominating, shrubs such as White Elderberry *Sambucus gaudichaudiana* and the halophytes Seaberry Saltbush *Rhagodia candolleana* subsp. *candolleana* and Bower Spinach *Tetragonia implexicoma* are common. Coast Sword-sedge *Lepidosperma gladiatum* may be a prominent feature of the ground layer together with Kidney-weed *Dichondra repens*. Other plants which may be present include Sea Celery *Apium prostratum* subsp. *prostratum*, Ragwort *Senecio jacobaea*, Jagged Fireweed *S. biserratus*, Tangled Bedstraw *Galium australe*, Angled Lobelia *Lobelia anceps*, Hairy Pennywort *Hydrocotyle hirta*, Common Bottle-daisy *Lagenophora stipitata*, Ivy-leaf Violet *Viola hederacea* s.l. and Knobby Club-sedge *Isolepis nodosa*.

Comments:

In protected areas of coastline such as at the western end of Waratah Bay where Cape Liptrap provides protection from the prevailing south-westerly weather, the EVC develops further out onto the sand dunes rather than being restricted to the topographically protected sites behind the dunes.

Coast Banksia Woodland may contain the rare shrub Limestone Pomaderris *Pomaderris oraria* subsp. *calcicola*. In coastal areas of East Gippsland where a warm temperate climate prevails, a number of species appear which link this EVC to Warm Temperate Rainforest. This includes Scrambling Lily *Geitonoplesium cymosum*, Austral Sarsaparilla *Smilax australis*, Milk-vine *Marsdenia rostrata* and Wombat Berry *Eustrephus latifolius*.

Gippsland species list including species frequency and fidelity.

Fidelity: Rating of faithfulness of a species to an EVC or Floristic Community
Highest fidelity rating indicated by an “F” ie species only recorded in respective group

% Frequency: Percentage occurrence of a species/taxa in an EVC or Floristic Community –
NB. Species highlighted in red are the most frequent and important.
 * = weed ie: non-native.
 Rarity categories from NRE’s Flora Information System (FIS).

EVC 2: COAST BANKSIA WOODLAND

Lifeform	Scientific Name	Common Name	% Fr	F
Trees	<i>Eucalyptus viminalis</i> ssp. <i>Pryoriana</i>	Coast Manna Gum	16	1
	<i>Eucalyptus baueriana</i>	Blue Box	10	114
	<i>Eucalyptus bosistoana</i>	Coast Grey Box	10	38
Shrubs	<i>Leucopogon parviflorus</i>	Coast Beard-heath	58	5
	<i>Myoporum insulare</i>	Common Boobiella	55	28
	<i>Melaleuca ericifolia</i>	Swamp Paperbark	55	5
	<i>Banksia integrifolia</i>	Coast Banksia	52	32
	<i>Acacia melanoxylon</i>	Blackwood	26	2
	<i>Acacia longifolia</i> var. <i>longifolia</i>	Sallow Wattle	23	9
	<i>Acacia mearnsii</i>	Black Wattle	23	6
	Rr <i>Pomaderris oraria</i> ssp. <i>calcicola</i>	Limestone Pomaderris	19	F
	<i>Hymenanchera dentata</i>	Tree Violet	19	10
	<i>Pittosporum undulatum</i>	Sweet Pittosporum	19	3
	<i>Leptospermum laevigatum</i>	Coast Tea-tree	19	2
	<i>Muehlenbeckia adpressa</i>	Climbing Lignum	16	12
	<i>Exocarpos cupressiformis</i>	Cherry Ballart	16	10
	<i>Rubus parvifolius</i>	Small-leaf Bramble	16	5
	<i>Kunzea ericoides</i>	Burgan	16	2
	<i>Correa reflexa</i>	Common Correa	16	2
	<i>Bursaria spinosa</i>	Sweet Bursaria	16	1
	Rr <i>Pomaderris oraria</i>	Coast Pomaderris	13	14
	<i>Pimelea axiflora</i>	Bootlace Bush	13	5
	<i>Monotoca elliptica</i>	Tree Broom-heath	13	5
	<i>Olearia lirata</i>	Snow Daisy-bush	13	1
	<i>Cassinia aculeata</i>	Common Cassinia	13	0.8
	<i>Dodonaea viscosa</i>	Sticky Hop-bush	10	57
	<i>Acmena smithii</i>	Lilly Pilly	10	3
	<i>Allocasuarina verticillata</i>	Drooping Sheoke	10	1
	<i>Banksia serrata</i>	Saw Banksia	10	0.7
	<i>Bursaria spinosa</i>	Sweet Bursaria	6	F
Herbs	<i>Dichondra repens</i>	Kidney-weed	81	3
	<i>Wahlenbergia gracilis</i>	Sprawling Bluebell	45	7
	<i>Galium gaudichaudii</i>	Rough Bedstraw	39	13
	<i>Geranium potentilloides</i>	Cinquefoil Cranesbill	39	2
	<i>Acaena novae-zelandiae</i>	Bidgee-widgee	39	2
	<i>Hydrocotyle hirta</i>	Hairy Pennywort	35	3
	<i>Apium prostratum</i>	Sea Celery	32	18
	<i>Ranunculus sessiliflorus</i>	Annual Buttercup	32	12
	<i>Oxalis corniculata</i> s.l.	Yellow Wood-sorrel	32	2
	<i>Crassula sieberiana</i>	Australian Stonecrop	29	5
	<i>Cotula australis</i>	Common Cotula	29	4
	<i>Leptinella reptans</i>	Creeping Cotula	26	13
	<i>Senecio spathulatus</i>	Coast Groundsel	23	15
	<i>Rumex brownii</i>	Slender Dock	23	8

Lifeform	Scientific Name	Common Name	% Fr	F
	<i>Senecio quadridentatus</i>	Cotton Fireweed	23	5
	<i>Lagenophora stipitata</i>	Common Bottle-daisy	23	0.8
	<i>Actites megalocarpa</i>	Coast Sow-thistle	19	76
	<i>Stellaria pungens</i>	Prickly Starwort	19	8
	<i>Luzula campestris</i> spp.agg.	Field Woodrush	19	4
	<i>Cardamine gunnii</i>	Common Bitter-cress	16	19
	<i>Epilobium billardierianum</i>	Robust Willow-herb	16	4
	<i>Veronica plebeia</i>	Trailing Speedwell	16	3
	<i>Senecio linearifolius</i>	Fireweed Groundsel	16	2
	<i>Viola hederacea</i>	Ivy-leaf Violet	16	0.8
	<i>Triglochin striatum</i>	Streaked Arrow-grass	13	7
	<i>Lilaeopsis polyantha</i>	Australian Lilaeopsis	13	7
	<i>Stellaria flaccida</i>	Forest Starwort	13	1
	<i>Cardamine hirsuta</i>	Hairy Wood-cress	10	114
Climbers/ Vines	<i>Clematis microphylla</i>	Small-leaved Clematis	42	5
	<i>Clematis glycinoides</i> var. <i>glycinoides</i>	Forest Clematis	19	4
	<i>Marsdenia rostrata</i>	Milk-vine	13	4
	<i>Eustrephus latifolius</i>	Wombat Berry	13	3
	<i>Smilax australis</i>	Austral Sarsaparilla	10	3
	<i>Geitonoplesium cymosum</i>	Scrambling Lily	10	2
Ferns	<i>Pteridium esculentum</i>	Austral Bracken	55	1
	<i>Pellaea falcata</i>	Sickle Fern	16	3
Sedges	<i>Isolepis nodosa</i>	Knobby Club-sedge	77	6
	<i>Baumea juncea</i>	Bare Twig-sedge	23	12
	<i>Lepidosperma concavum</i>	Sand-hill Sword-sedge	23	4
	<i>Isolepis marginata</i>	Little Club-sedge	19	5
	<i>Lepidosperma gladiatum</i>	Coast Sword-sedge	10	3
Rushes	<i>Juncus kraussii</i>	Sea Rush	26	8
	<i>Juncus pallidus</i>	Pale Rush	19	6
Halophytes	<i>Rhagodia candolleana</i> ssp. <i>candolleana</i>	Seaberry Saltbush	58	13
	<i>Tetragonia implexicoma</i>	Bower Spinach	52	23
	<i>Samolus repens</i>	Creeping Brookweed	32	8
	<i>Sarcocornia quinqueflora</i>	Beaded Glasswort	26	8
	<i>Carpobrotus rossii</i>	Karkalla	23	11
	<i>Disphyma crassifolium</i> ssp. <i>clavellatum</i>	Rounded Noon-flower	23	8
	<i>Selliera radicans</i>	Shiny Swamp-mat	23	5
	<i>Suaeda australis</i>	Austral Seablite	16	11
Other	<i>Lomandra longifolia</i>	Spiny-headed Mat-rush	45	1
	<i>Dianella</i> <i>brevicaulis/revoluta</i>	Black-anther Flax-lily	23	2
Grasses	<i>Poa</i> sp.	Tussock Grass	55	1
	<i>Distichlis distichophylla</i>	Australian Salt-grass	42	12
	<i>Microlaena stipoides</i> var. <i>stipoides</i>	Weeping Grass	26	1
	<i>Phragmites australis</i>	Common Reed	19	8
	<i>Imperata cylindrica</i>	Blady Grass	16	5
	<i>Notodanthonia longifolium</i>	Long-leaf Wallaby-grass	13	76
	<i>Spinifex sericeus</i>	Hairy Spinifex	13	51
Weeds	* <i>Hypochoeris radicata</i>	Cat's Ear	68	1
	* <i>Cerastium glomeratum</i>	Common Mouse-ear	55	11
		Chickweed		
	* <i>Sonchus oleraceus</i>	Sow-thistle	52	4
	* <i>Cirsium vulgare</i>	Spear Thistle	48	3
	* <i>Holcus lanatus</i>	Yorkshire Fog	29	1
	* <i>Asparagus asparagoides</i>	Bridal Creeper	26	12
	* <i>Stellaria media</i>	Chickweed	26	9

Lifeform	Scientific Name	Common Name	% Fr	F
*	<i>Polycarpon tetraphyllum</i>	Four-leaved Allseed	19	19
*	<i>Rubus fruticosus</i> spp. agg.	Blackberry	19	3
*	<i>Ammophila arenaria</i>	Marram Grass	16	F
*	<i>Plantago coronopus</i>	Buck's-horn Plantain	16	4
*	<i>Anagallis arvensis</i>	Pimpernel	16	1
*	<i>Centaureum tenuiflorum</i>	Branched Centaury	16	1
*	<i>Lycium ferocissimum</i>	African Box-thorn	13	153
*	<i>Taraxacum</i> Sect. <i>Ruderalia</i>	Garden Dandelion	13	7
*	<i>Verbascum virgatum</i>	Twiggy Mullein	10	23