

## **Gippsland Vegetation Types: Ecological Vegetation Classes (EVC's)**

EVC description derived from Davies et.al (2001) Ecological Vegetation Class Mapping at 1:25 000 in Gippsland.

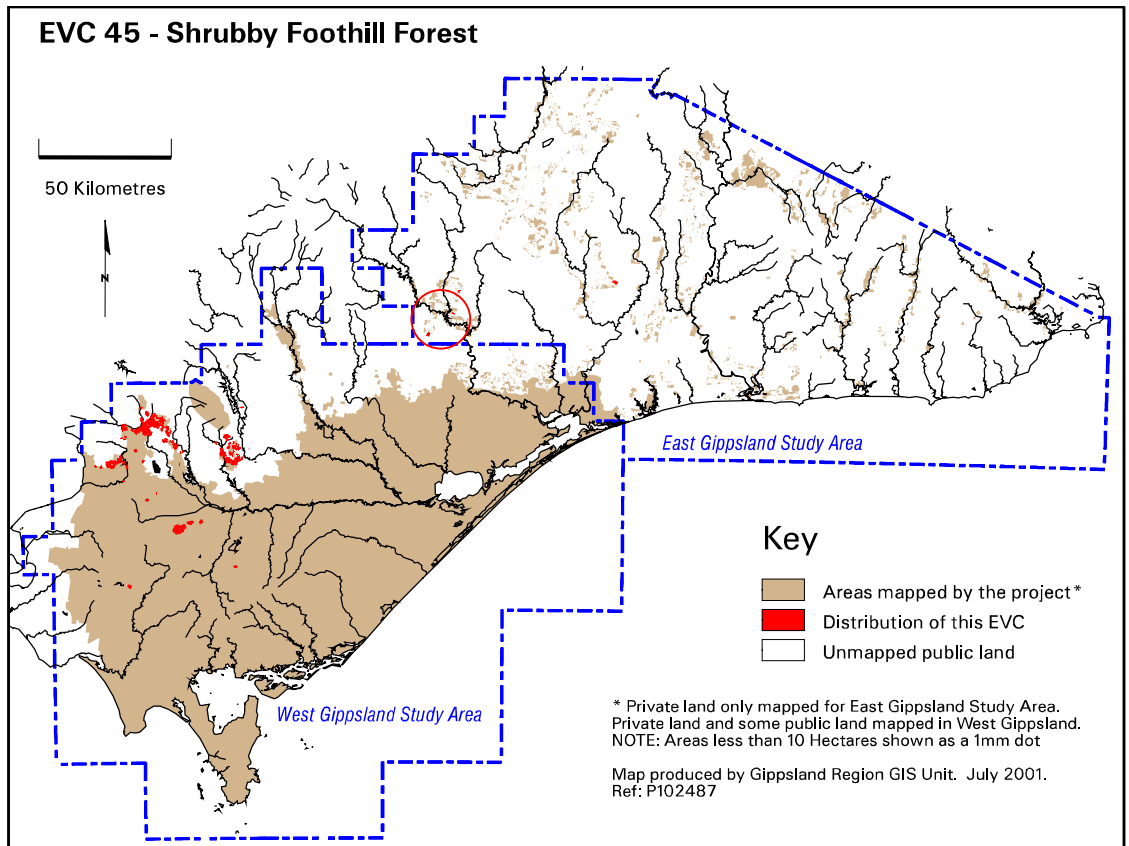
### **EVC 45 Shrubby Foothill Forest**

Occurs on ridges and exposed slopes in association with Damp Forest on moderately fertile soils below 500m. The overstorey consists of eucalypts with an understorey dominated by narrow-leaved and broad-leaved shrubs and scattered ferns, graminoids and herbs.



Shrubby Foothill Forest. Noojee area. Photo: Alison Oates 1998.

<b>Elevation (metres above sea level)</b>	<500
<b>Average rainfall p.a. (mm)</b>	700-1100
<b>Topography</b>	Spurs and exposed slopes, mainly northerly and westerly aspects
<b>Geology</b>	Variable
<b>Soils</b>	Fertile, well-drained, grey-brown loam and clay loam
<b>Related/adjacent EVCs/FCs</b>	Damp Forest, Herb-rich Foothill Forest, Lowland Forest
<b>Present land use</b>	Timber harvesting, nature conservation, recreation, water catchment
<b>Present distribution</b>	Foothills of the Great Dividing Range, Strzelecki ranges extending from Carrajung on the eastern flank to Loch in the west, Wilsons Promontory National Park
<b>Examples of sites/quadrats/lists</b>	Loch Valley Rd, Noojee (U23576), Karl Harmann Reserve, Leongatha (U23445)
<b>Total Area(ha)/ Number of polygons</b>	2,548/275



**Vegetation: structure/floristics:**

Overstorey is dominated by Narrow-leaf Peppermint *Eucalyptus radiata*, Messmate *E. obliqua*, Mountain Grey Gum *E. cypellocarpa* and to a lesser extent Silver-top *E. sieberi*. A shrubby understorey characterises this EVC with a limited range of herbs and grasses in the ground layer.

Characteristic understorey shrubs include Narrow-leaf Wattle *Acacia mucronata*, Dusty Miller *Spyridium parvifolium*, Prickly Currant-bush *Coprosma quadrifida*, Hazel Pomaderris *Pomaderris aspera*, Snow Daisy-bush *Olearia lirata*, Shiny Cassinia *Cassinia longifolia*, Hop Goodenia *Goodenia ovata*, Handsome Flat-pea *Platylobium formosum* and Wiry Bauera *Bauera rubioides*.

The ground layer is notably species depauperate and helps distinguish it from Herb-rich Foothill Forest. Species present include Ivy-leaf Violet *Viola hederacea*, Forest Wire-grass *Tetrarrhena juncea*, Austral Bracken *Pteridium esculentum* and Tall Sword-sedge *Lepidosperma elatius*.

**Comments:**

This EVC has been extensively cleared in the Strzeleckis with one of the few remaining intact remnant patches being at the Karl Harmann Reserve north-east of Leongatha.

Shrubby Foothill Forest is similar in structure to Herb-rich Foothill Forest but has a varied shrub layer and tends to lack a diverse ground flora.

As this EVC has not been identified as a distinct group in the quadrat analysis, its status is questionable and further work is required to show how it differs from Damp Forest and Lowland Forest.

**Gippsland species list including species frequency and fidelity.**

**% Frequency:**

Percentage occurrence of a species/taxa in an EVC or Floristic Community – **NB. Species highlighted in red are the most frequent and important.**

\*=weeds ie: non native.

Rarity categories from NRE's Flora Information System (FIS).

**EVC 45      SHRUBBY FOOTHILL FOREST**

<b>Lifeform</b>	<b>Scientific Name</b>	<b>Common Name</b>	<b>% Fr</b>
Trees	<i>Eucalyptus sieberi</i>	Silvertop Ash	100.00
	<i>Eucalyptus obliqua</i>	Messmate	100.00
Shrubs	<i>Acacia obliquinervia</i>	Mountain Hickory Wattle	80.00
	<i>Exocarpos cupressiformis</i>	Cherry Ballarat	80.00
Herbs	<i>Goodenia ovata</i>	Hop Goodenia	100.00
	<i>Platylobium formosum</i>	Handsome Flat-pea	80.00
	<i>Viola hederacea</i>	Ivy-leaf Violet	100.00
Sedges	<i>Lepidosperma laterale</i>	Variable Sword-sedge	80.00
Grasses	<i>Tetrarrhena juncea</i>	Forest Wire-grass	80.00