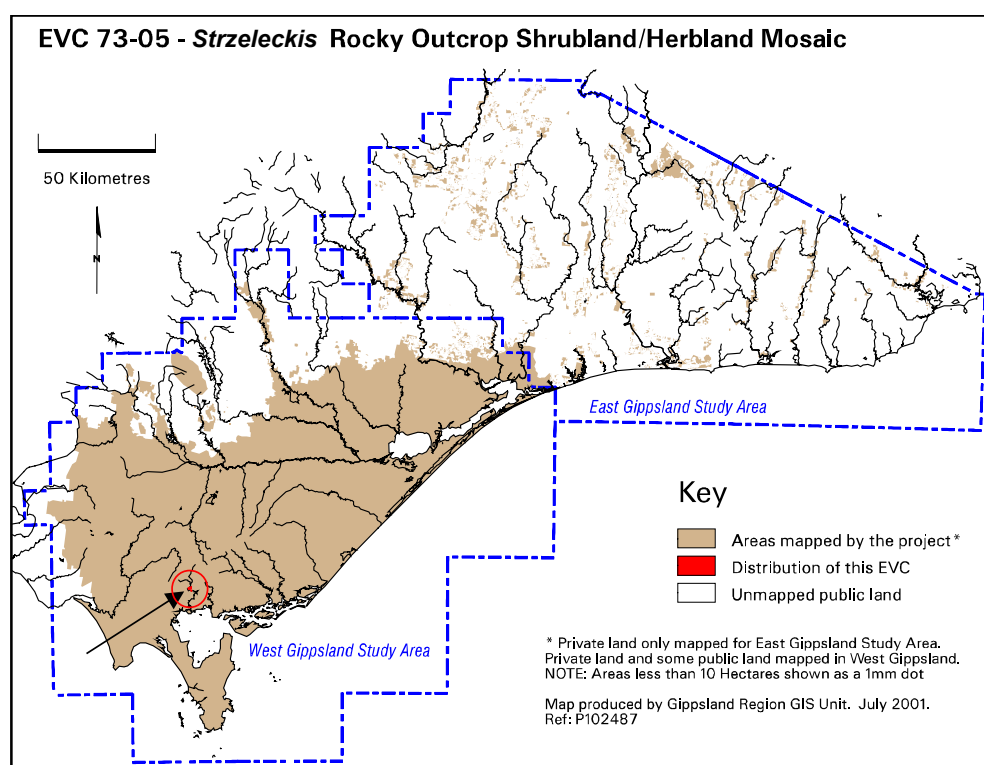


EVC 73 Rocky Outcrop Shrubland/Herbland Mosaic

Occurs in South Gippsland at low elevations on outcropping rock associated with the stresses imposed by shallow, drought-prone soils. This mosaic consists of Rocky Outcrop Shrubland that grows in localised areas of shallow soil accumulation, and mossland/herbland occurring in localised areas of skeletal soils. Structurally, consists of dense low shrubs over a low ground cover of ferns, forbs and grasses.

Floristic Community 73-05 *Strzeleckis* Rocky Outcrop Shrubland/Herbland Mosaic

Elevation (metres above sea level)	<230
Average rainfall p.a. (mm)	>1000
Topography	Steep, exposed north-facing crests and slopes
Geology	Cretaceous, mudstone, sandstone and siltstone
Soils	Skeletal
Related/adjacent EVCs/FCs	Damp Forest, Rocky Outcrop Shrubland
Present land use	Marginal agriculture
Present distribution	Only recorded in South Gippsland on the Foster-Mt Best Road north-east of Foster
Examples of sites/quadrats/lists	U23356
Total Area (ha)/ Number of polygons	22/3
Group analysis no.	Not identified by 40 group analysis



Vegetation: structure/floristics:

The dominant shrub is Burgan *Kunzea ericoides* but low shrubs of Hazel Pomaderris *Pomaderris aspera*, Silver Wattle *Acacia dealbata* and Blackwood *A. melanoxylon* are also present. The groundcover includes a number of herbs such as the grasses Stiped Wallaby-grass *Austrodanthonia racemosa* var. *racemosa* and Grey Tussock-grass *Poa sieberiana* as well as Variable Groundsel *Senecio pinnatifolius*, Short-stem Sedge *Carex breviculmis* and Green Rock Fern *Cheilanthes austrotenuifolia*.

Comments:

Bryophytes and lichens are common and may cover rock surfaces. As the group was not identified in the analysis, its status needs to be confirmed. It may be an artefact resulting from soil loss due to agricultural clearing.

The above description is based on one site only and further quadrating is required to verify its status as a separate floristic community.