

Gippsland Vegetation Classes: Ecological Vegetation Classes (EVC's)

EVC description derived from Davies et.al (2001) Ecological Vegetation Class Mapping at 1: 25000 in Gippsland.

EVC 48 Heathy Woodland

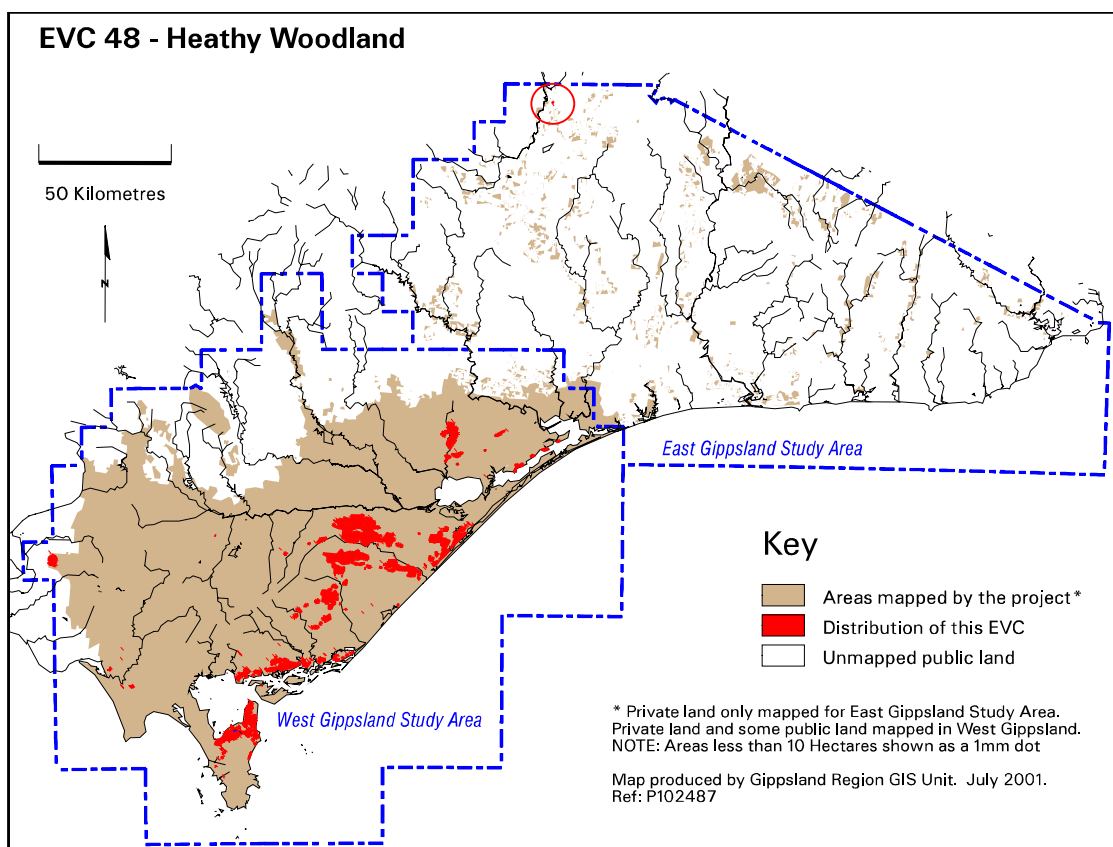
Occurs on low hills and rises, plains and slopes in areas of low to moderate rainfall, generally associated with deep, uniform textured nutrient-poor sands. Eucalypt-dominated low woodland over narrow-leaved shrubs except where frequent fire has reduced this to a dense cover of bracken.



Heathy Woodland containing Saw Banksia *Banksia serrata* along Five Mile Rd Wilsons Promontory National Park. Photo: John Davies 1998.

Elevation (metres above sea level)	<350
Average rainfall p.a. (mm)	500-1000
Topography	Low hills, rises, plains and slopes
Geology	Tertiary and Quaternary sand deposits
Soils	Infertile, deep uniform sands with topsoil a light grey, loose sand, grading into a bleached, greyish-white to yellow-brown sand (sometimes gravelly) subsoil. Sometimes a shallow, gravelly sand surface over a cemented yellow-brown gravelly hardpan
Related/adjacent EVCs/FCs	Sand Forest, Damp Sands Herb-rich Woodland, Lowland

	Forest, Sand Heathland
Present land use	Sand extraction, agriculture, residential subdivision, native plant nursery development, tip and refuse disposal, cemetery development, golf course development, nature conservation, recreation
Present distribution	Gippsland plains, South Gippsland, Wilsons Promontory National Park
Examples of sites/quadrats/lists	Providence Ponds Flora and Fauna Reserve (U23057), Holey Plains State Park (U23181), Wilsons Promontory National Park: south of Mt. Hunter (F22626), east of Chinaman beach (F22630) and south-east of Millers Landing (F22693)
Total Area(ha)/ Number of polygons	34,046/523



Vegetation: structure/floristics:

Canopy consists of low scattered trees of Messmate *Eucalyptus obliqua*, Narrow-leaf Peppermint *E. radiata* and Shining Peppermint *E. willisii* as well as Yertchuk *E. consideriana*. Messmate *E. obliqua* tends only to be found in this EVC in exposed near coastal situations in a stunted form. The heathy understorey lacks grasses and herbs and is characterised by small, often prickly-leaved shrubs of the Myrtaceae, Epacridaceae, Dilleniaceae, Fabaceae and Mimosaceae families. Banksias (Proteaceae family) are also common with Saw Banksia *Banksia serrata* often being conspicuous. The most frequent shrubs found in the understorey include Heath Tea-tree *Leptospermum myrsinoides*, Prickly Tea-tree *L. continentale*, Common Heath *Epacris impressa*, Showy Bossiaea *Bossiaea cinerea* and Prickly Broom-heath *Monotoca scoparia*.

Other shrubs present are Sweet Wattle *Acacia suaveolens*, Smooth Parrot-pea *Dillwynia glaberrima*, Silver Banksia *Banksia marginata*, Saw Banksia *B. serrata*, Common Beard-heath *Leucopogon virgatus*, Common Correa *Correa reflexa*, Common Wedge-pea *Gompholobium huegelii*, Common Aotus *Aotus ericoides*, the rare Pink Zieria *Zieria veronicea*, Prickly Broom-heath *Monotoca scoparia*, Pine Heath *Astroloma pinifolium*, Hairy Pink-bells *Tetratea pilosa*, Horny Cone-bush *Isopogon ceratophyllus*, Ribbed Thryptomene *Thryptomene micrantha*, the endangered

Prostrate Cone-bush *I. prostratus* (Providence Ponds), Common Flat-pea *Platylobium obtusangulum*, Honey-pots *Acrotriche serrulata*, Wedding Bush *Ricinocarpos pinifolius* and Spike Wattle *Acacia oxycedrus*. The Guinea-flowers *Hibbertia* spp. are notably diverse in this EVC.

Other common species present are Broom Spurge *Amperea xiphoclada*, Austral Bracken *Pteridium esculentum*, Thatch Saw-sedge *Gahnia radula*, Spiny-headed Mat-rush *Lomandra longifolia*, and Small Grass-tree *Xanthorrhoea minor* subsp. *lutea*, Austral Grass-tree *Xanthorrhoea australis*, Blue Dampiera *Dampiera stricta*, Tassel Rope-rush *Hypolaena fastigiata* and Sand-hill Sword-sedge *Lepidosperma concavum*. The parasitic vine, Slender Dodder-laurel *Cassytha glabella*, is often present but may become locally extinct for a year or two after a hot fire.

The rare Spotted Sun-orchid *Thelymitra ixioides* is occasionally found.

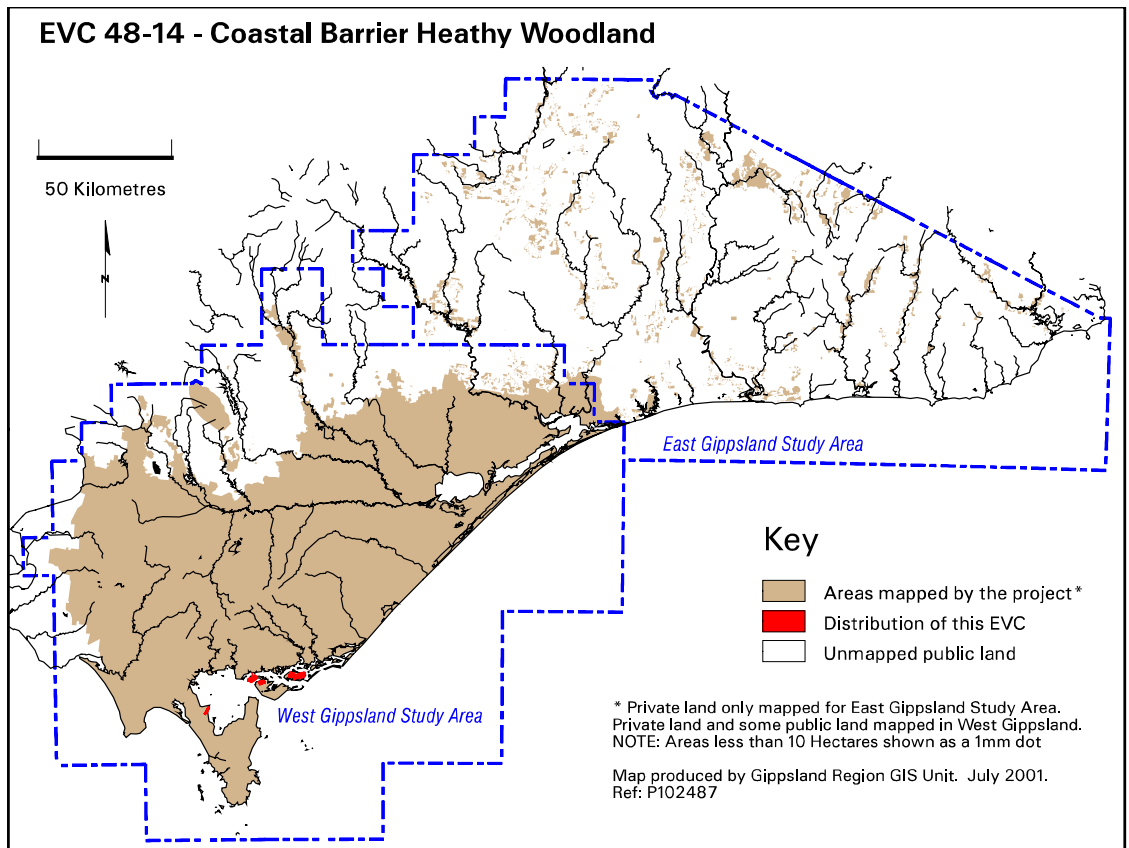
Bracken-dominated understoreys can develop in this EVC probably as a result of a high fire frequency or unsuitable burning regime, leading to the elimination of heathy shrubs and *Banksia serrata* from the understorey.

Comments:

Heathy Woodland merges into Sand Heathland where sites become extremely well-drained, infertile and drought-stressed. As conditions become more poorly drained, this EVC merges into Sand Heathland/Wet Heathland Mosaic through to Wet Heathland and Riparian Scrub.

Floristic Community 48-14 Coastal Barrier Heathy Woodland

Elevation (metres above sea level)	<10
Average rainfall p.a. (mm)	650-750
Topography	Coastal flats
Geology	Quaternary deposits of aeolian sand and low sandy rises
Soils	Well-drained infertile sand
Related/adjacent EVCs/FCs	Sand Heathland
Present land use	Sand extraction, agriculture, residential subdivision, native plant nursery development, tip and refuse disposal, cemetery development, nature conservation, recreation
Present distribution	Shores of Corner Inlet, Snake, Sunday and Little Snake Islands in the Nooramunga Marine and Coastal Park, South Gippsland and also on the Boole Poole Peninsula in the Gippsland Lakes Coastal Park
Examples of sites/quadrats/lists	Main track between Swashway Jetty and hut, Snake Island (U23805), Port Albert Racecourse (U23097)
Total Area(ha)/ Number of polygons	557/12



Vegetation: structure/floristics:

This community of Heathy Woodland appears to be a coastal old-growth form and is notable for the paucity of the usual short, prickly, narrow-leaved shrub species normally found in Heathy Woodland. In addition, it has a denser, taller shrub stratum including dense thickets of Tree Broom-heath *Monotoca elliptica* and Saw Banksia *Banksia serrata*. The former species is sensitive to high fire frequency and its structural dominance may reflect a lower fire frequency regime.

Emergent Coast Manna Gum *Eucalyptus viminalis* subsp. *pyroriana* is often present over an understorey of shrubs including Prickly Tea-tree *Leptospermum continentale*, Sallow Wattle *Acacia longifolia*, Common Heath *Epacris impressa* and Honey-pots *Acrotriche serrulata*. Austral Bracken *Pteridium esculentum* is present in nearly all sites and common ground cover species include Common Bottle-daisy *Lagenophora stipitata*, Austral Grass-tree *Xanthorrhoea australis*, Sand-hill Sword-sedge *Lepidosperma concavum*, Spiny-headed Mat-rush *Lomandra longifolia* and Knobby Club-sedge *Isolepis nodosa*.

Comments:

Coastal Barrier Heathy Woodland may be just a coastal old-growth form of Heathy Woodland.

Gippsland species list including species frequency and fidelity.

Fidelity:

Rating of faithfulness of a species to an EVC or Floristic Community. Highest fidelity rating indicated by an “F” ie species only recorded in respective group.

% Frequency:

Percentage occurrence of a species/taxa in an EVC or Floristic Community – **NB. Species highlighted in red are the most frequent and important.**

* = weed ie: non native.

Rarity categories from NRE’s Flora Information System (FIS)

EVC 48: HEATHY WOODLAND

Lifeform	Scientific Name	Common Name	% Fr	F
Trees	<i>Eucalyptus considiana</i>	Yertchuk	62	10
	<i>Eucalyptus radiata</i> s.l.	Narrow-leaf Peppermint	29	2
	<i>Eucalyptus viminalis</i> ssp. <i>pryoriana</i>	Coast Manna-gum	20	1
Shrubs	<i>Eucalyptus willisii</i>	Shining Peppermint	18	25
	<i>Leptospermum myrsinoides</i>	Heath Tea-tree	95	13
	<i>Epacris impressa</i>	Common Heath	94	4
	<i>Monotoca scoparia</i>	Prickly Broom-heath	92	11
	<i>Bossiaea cinerea</i>	Showy Bossiaea	88	13
	<i>Amperea xiphoclada</i> var. <i>xiphoclada</i>	Broom Spurge	77	8
	<i>Leptospermum continentale</i>	Prickly Tea-tree	68	3
	<i>Dillwynia glaberrima</i>	Smooth Parrot-pea	67	9
	<i>Banksia marginata</i>	Silver Banksia	62	8
	<i>Leucopogon virgatus</i>	Common Beard-heath	58	12
	<i>Banksia serrata</i>	Saw Banksia	56	5
	<i>Correa reflexa</i>	Common Correa	55	11
	<i>Acacia oxycedrus</i>	Spike Wattle	48	10
	<i>Hibbertia acicularis</i>	Prickly Guinea Flower	46	10
	<i>Tetradlea pilosa</i>	Hairy Pink-bells	45	14
	<i>Leucopogon ericoides</i>	Pink Beard-heath	35	26
	<i>Pimelea linifolia</i>	Slender Rice-flower	33	5
	<i>Hibbertia virgata</i>	Twiggy Guinea-flower	18	13
	<i>Hibbertia riparia</i>	Erect Guinea-flower	17	8
	<i>Hibbertia fasciculata</i> var. <i>prostrata</i>	Bundled Guinea-flower	15	20
Herbs	<i>Gonocarpus tetragynus</i>	Common Raspwort	63	3
	<i>Dampiera stricta</i>	Blue Dampiera	36	6
	<i>Drosera peltata</i> ssp. <i>auriculata</i>	Tall Sundew	19	2
	<i>Gompholobium huegelii</i>	Common Wedge-pea	18	16
Orchids	<i>Glossodia major</i>	Wax-lip Orchid	18	14
Sedges	<i>Gahnia radula</i>	Thatch Saw-sedge	55	3
Other	<i>Lomandra filiformis</i>	Wattle Mat-rush	57	3
	<i>Lomandra longifolia</i>	Spiny-headed Mat-rush	57	2
Rushes	<i>Caustis pentandra</i>	Thick Twist-rush	20	74
Ferns	<i>Pteridium esculentum</i>	Austral Bracken	86	2
Grass-trees	<i>Xanthorrhoea minor</i> ssp. <i>lutea</i>	Small Grass-tree	42	5
Lilies	<i>Burchardia umbellata</i>	Milkmaids	17	2
Grasses	<i>Poa</i> sp.	Tussock Grass	48	1
Weeds	* <i>Hypochoeris radicata</i>	Cat's Ear	31	0.7

EVC 48-14: COASTAL BARRIER HEATHY WOODLAND

Lifeform	Scientific Name	Common Name	% Fr	F
Trees/Shrubs	<i>Eucalyptus viminalis</i> ssp. <i>pryoriana</i>	Coast Manna-gum	60	4
	<i>Exocarpus strictus</i>	Pale-fruit Ballart	20	9
	<i>Banksia serrata</i>	Saw Banksia	93	7
	<i>Monotoca elliptica</i>	Tree Broom-heath	80	38
	<i>Epacris impressa</i>	Common Heath	80	3
	<i>Leptospermum continentale</i>	Prickly Tea-tree	60	2
	<i>Monotoca scoparia</i>	Prickly Broom-heath	53	4
	<i>Acacia longifolia</i> var. <i>longifolia</i>	Sallow Wattle	47	19
	<i>Acrotriche serrulata</i>	Honey-pots	40	5
	<i>Leucopogon ericoides</i>	Pink Beard-heath	33	9
	<i>Acacia oxycedrus</i>	Spike Wattle	33	4
	<i>Banksia marginata</i>	Silver Banksia	33	3
	<i>Acacia suaveolens</i>	Sweet Wattle	20	27
	<i>Aotus ericoides</i>	Common Aotus	20	13
	<i>Kennedia prostrata</i>	Running Postman	20	5
	<i>Hibbertia acicularis</i>	Prickly Guinea Flower	20	3
	<i>Melaleuca ericifolia</i>	Swamp Paperbark	20	2
	<i>Leptospermum laevigatum</i>	Coast Tea-tree	20	2
	<i>Dillwynia glaberrima</i>	Smooth Parrot-pea	20	2
	Herbs	<i>Lagenophora stipitata</i>	Common Bottle-daisy	40
<i>Gonocarpus tetragynus</i>		Common Raspwort	27	1
Orchids	<i>Caladenia carnea</i> spp. agg.	Pink Fingers Caladenia	27	21
	<i>Pterostylis parviflora</i> s.l.	Tiny Greenhood	20	80
	<i>Acianthus caudatus</i>	Mayfly Orchid	20	34
	<i>Cyrtostylis reniformis</i>	Mosquito Orchid	20	9
Climbers/ Vines	<i>Comesperma volubile</i>	Love Creeper	20	1
	<i>Billardiera scandens</i> var. <i>scandens</i>	Common Apple-berry	20	2
Ferns	<i>Pteridium esculentum</i>	Austral Bracken	100	2
Grass-trees	<i>Xanthorrhoea australis</i>	Austral Grass-tree	47	12
Sedges	<i>Lepidosperma concavum</i>	Sand-hill Sword-sedge	60	12
	<i>Isolepis nodosa</i>	Knobby Club-sedge	40	3
Other	<i>Lomandra longifolia</i>	Spiny-headed Mat-rush	53	2
Cord-rush	<i>Hypolaena fastigiata</i>	Tassel Rope-rush	20	5
Grasses	<i>Deyeuxia quadriseta</i>	Reed Bent-grass	20	3
	<i>Microlaena stipoides</i> var. <i>stipoides</i>	Weeping Grass	20	0.7
	<i>Poa</i> sp.	Tussock Grass	20	0.4
Weeds	* <i>Centaurium tenuiflorum</i>	Branched Centaury	20	2