

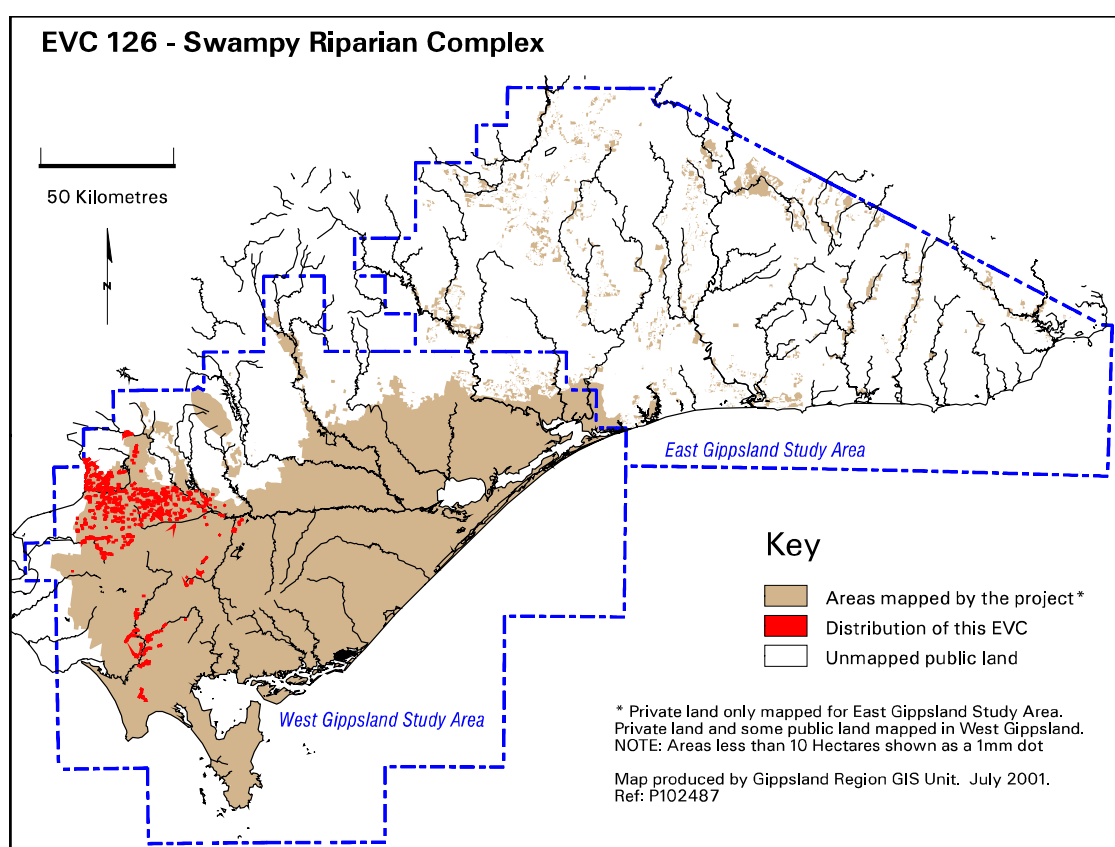
EVC Information Sheets.

EVC description derived from Davies et.al (2001) Ecological Vegetation Class Mapping at 1:25 000 in Gippsland.

EVC 126 Swampy Riparian Complex

Encompasses several communities of poor drainage areas located in topographically protected high rainfall country, especially around Warragul and Thorpdale but also extending into South Gippsland north of Cape Liptrap. Emergent eucalypts over a shrub layer with a ground layer primarily ferny to sedgy in character, including mixtures of wet forest and poor drainage species.

Elevation (metres above sea level)	<300
Average rainfall p.a. (mm)	<1150
Topography	Poor drainage flats
Geology	Tertiary basalt, Quaternary deposits
Soils	Deep organic loams, peats
Related/adjacent EVCs/FCs	Swampy Riparian Woodland, Swamp Scrub, Riparian Scrub
Present land use	Agriculture, nature conservation
Present distribution	West and South Gippsland, particularly north of Warragul
Examples of sites/quadrats/lists	Longwarry (U23534), Bear Creek, Ellinbank (U23524), Bunyip River flats
Total Area(ha)/ Number of polygons	1,675/726



Vegetation: structure/floristics:

The emergent eucalypt is usually Swamp Gum *Eucalyptus ovata* over Blackwood *Acacia melanoxylon* and Swamp Paperbark *Melaleuca ericifolia* although Scented Paperbark *Melaleuca squarrosa* can also be present. Other shrubs include Hazel Pomaderris *Pomaderris aspera*, Prickly Moses *Acacia verticillata*, Prickly Currant-bush *Coprosma quadrifida* and Hop Goodenia *Goodenia ovata*. Soft Tree-fern *Dicksonia antarctica* is also often present.

The ground layer is primarily ferny to sedgy in character, including mixtures of wet forest and swamp species. Sedges present include Leafy Flat-sedge *Cyperus lucidus*, Tall Sedge *Carex appressa*, *Lepidosperma* and rushes *Juncus* spp. as well as grasses such as *Poa* spp. Common Reed *Phragmites australis* is often found in standing water. The understorey has a number of Water Ferns *Blechnum* spp., sedges *Carex* spp. and herbs. Tall Sword-sedge *Lepidosperma elatius* is prevalent on the marginal wet flat remnants that are largely spring or seepage-fed.

Comments:

Included in this EVC and relevant to the Gippsland study area is Swamp Forest described in the Central Highlands RFA study (Commonwealth of Australia 1997) and used here as a basis for the floristic description of Swampy Riparian Complex. Swampy Riparian Woodland is also included in this complex for the extant mapping in West and South Gippsland. Few areas remain intact due to extensive draining and clearing for agriculture and those remaining are normally dominated by weeds.

Gippsland species list including species frequency and fidelity.

Fidelity: Rating of faithfulness of a species to an EVC or Floristic Community. Highest fidelity rating indicated by an “F” ie species only recorded in respective group.

% Frequency: Percentage occurrence of a species/taxa in an EVC or Floristic Community – **NB. Species highlighted in red are the most frequent and important.**

+ - Species added manually from local knowledge, not in original analysis
 * = weed ie: non native

Rarity categories from NRE’s Flora Information System (FIS).

EVC 126: SWAMPY RIPARIAN COMPLEX

Lifeform	Scientific Name	Common Name	% Fr	F
Trees	<i>Eucalyptus ovata</i>	Swamp Gum	46	13
	<i>Eucalyptus obliqua</i>	Messmate	25	2
	<i>Eucalyptus cypellocarpa</i>	Mountain Grey Gum	17	3
	<i>Eucalyptus radiata</i> s.l.	Narrow-leaf Peppermint	17	1
	<i>Eucalyptus viminalis</i>	Manna Gum	12	0.8
Shrubs	<i>Eucalyptus strzeleckii</i>	Strzelecki Gum +		
	<i>Melaleuca squarrosa</i>	Scented Paperbark	75	16
	<i>Acacia melanoxylon</i>	Blackwood	75	5
	<i>Coprosma quadrifida</i>	Prickly Currant-bush	50	3
	<i>Ozothamnus ferrugineus</i>	Tree Everlasting	46	4
	<i>Leptospermum continentale</i>	Prickly Tea-tree	42	1
	<i>Prostanthera lasianthos</i>	Victorian Christmas-bush	37	9
	<i>Acacia verticillata</i>	Prickly Moses	37	6
	<i>Goodenia ovata</i>	Hop Goodenia	33	5
	<i>Pomaderris aspera</i>	Hazel Pomaderris	17	2
	<i>Leptospermum lanigerum</i>	Woolly Tea-tree	12	37
	Herbs	<i>Gratiola peruviana</i>	Austral Brooklime	50
<i>Viola hederacea</i>		Ivy-leaf Violet	54	3
<i>Lobelia anceps</i>		Angled Lobelia	46	12
<i>Euchiton involucratus</i>		Star Cudweed	46	12
<i>Stellaria flaccida</i>		Forest Starwort	42	4
<i>Hydrocotyle hirta</i>		Hairy Pennywort	33	2
<i>Gonocarpus tetragynus</i>		Common Raspwort	33	1
<i>Epilobium billardierianum</i>		Robust Willow-herb	29	7
<i>Acaena novae-zelandiae</i>		Bidgee-widgee	29	1
<i>Hydrocotyle sibthorpioides</i>		Shining Pennywort	21	6
<i>Senecio minimus</i>		Shrubby Fireweed	21	4
Lilies	<i>Persicaria decipiens</i>	Slender Knotweed	17	10
	<i>Hypericum japonicum</i>	Matted St John’s Wort	17	9
	<i>Dianella tasmanica</i>	Tasman Flax-lily	17	8
	Sedges	<i>Isolepis inundata</i>	Swamp Club-sedge	54

Lifeform	Scientific Name	Common Name	% Fr	F
	<i>Carex appressa</i>	Tall Sedge	54	7
	<i>Schoenus maschalinus</i>	Leafy Bog-sedge	33	57
	<i>Baumea tetragona</i>	Square Twig-sedge	29	39
	<i>Cyperus lucidus</i>	Leafy Flat-sedge	25	21
	<i>Gahnia sieberiana</i>	Red-fruit Saw-sedge	25	10
	<i>Lepidosperma laterale</i>	Variable Sword-sedge	25	3
	<i>Carex fascicularis</i>	Tassel Sedge	17	17
Rushes	<i>Juncus planifolius</i>	Broad-leaf Rush	33	22
	<i>Juncus pauciflorus</i>	Loose-flower Rush	17	20
	<i>Juncus procerus</i>	Tall Rush	17	15
	<i>Juncus articulatus</i> x <i>holoschoenus</i>	Rush	17	12
Cord-rush	<i>Balaskion tetraphyllum</i> subsp. <i>tetraphyllum</i>	Tassel Cord-rush	12	37
Climbers/Vines	<i>Clematis aristata</i>	Mountain Clematis	33	2
	<i>Parsonsia brownii</i>	Twining Silkpod	17	9
Tree-ferns	<i>Dicksonia antarctica</i>	Soft Tree-fern	42	10
	<i>Cyathea australis</i>	Rough Tree-fern	37	6
Ferns	<i>Blechnum minus</i>	Soft Water-fern	67	66
	<i>Blechnum nudum</i>	Fishbone Water-fern	67	28
	<i>Gleichenia microphylla</i>	Scrambling Coral-fern	42	248
	<i>Histiopteris incisa</i>	Bat's Wing Fern	37	14
	<i>Todea barbara</i>	Austral King-fern	33	F
	<i>Pteridium esculentum</i>	Austral Bracken	33	0.7
	<i>Hypolepis rugosula</i>	Ruddy Ground-fern	25	60
	<i>Blechnum wattsi</i>	Hard Water-fern	21	11
	<i>Gleichenia dicarpa</i>	Poached Coral-fern	17	40
Grasses	<i>Tetrarrhena juncea</i>	Forest Wire-grass	71	6
	<i>Poa tenera</i>	Slender Tussock-grass	42	14
	<i>Microlaena stipoides</i> var. <i>stipoides</i>	Weeping Grass	21	0.7
	<i>Poa</i> sp.	Tussock Grass	21	0.4
Weeds	* <i>Hypochoeris radicata</i>	Cat's Ear	58	1
	* <i>Rubus vestitus</i>	Blackberry	37	11
	* <i>Solanum nigrum</i> s.l.	Black Nightshade	33	7
	* <i>Holcus lanatus</i>	Yorkshire Fog	33	2
	* <i>Sonchus asper</i>	Rough Sow-thistle	25	4
	* <i>Sonchus oleraceus</i>	Sow-thistle	25	2
	* <i>Oxalis corniculata</i> s.l.	Yellow Wood-sorrel	25	1
	* <i>Ranunculus repens</i>	Creeping Buttercup	21	17
	* <i>Anthoxanthum odoratum</i>	Sweet Vernal-grass	21	3
	* <i>Rubus polyanthemus</i>	Blackberry	17	10
	* <i>Rubus fruticosus</i>	Blackberry	17	3
	* <i>Cirsium vulgare</i>	Spear Thistle	17	1