

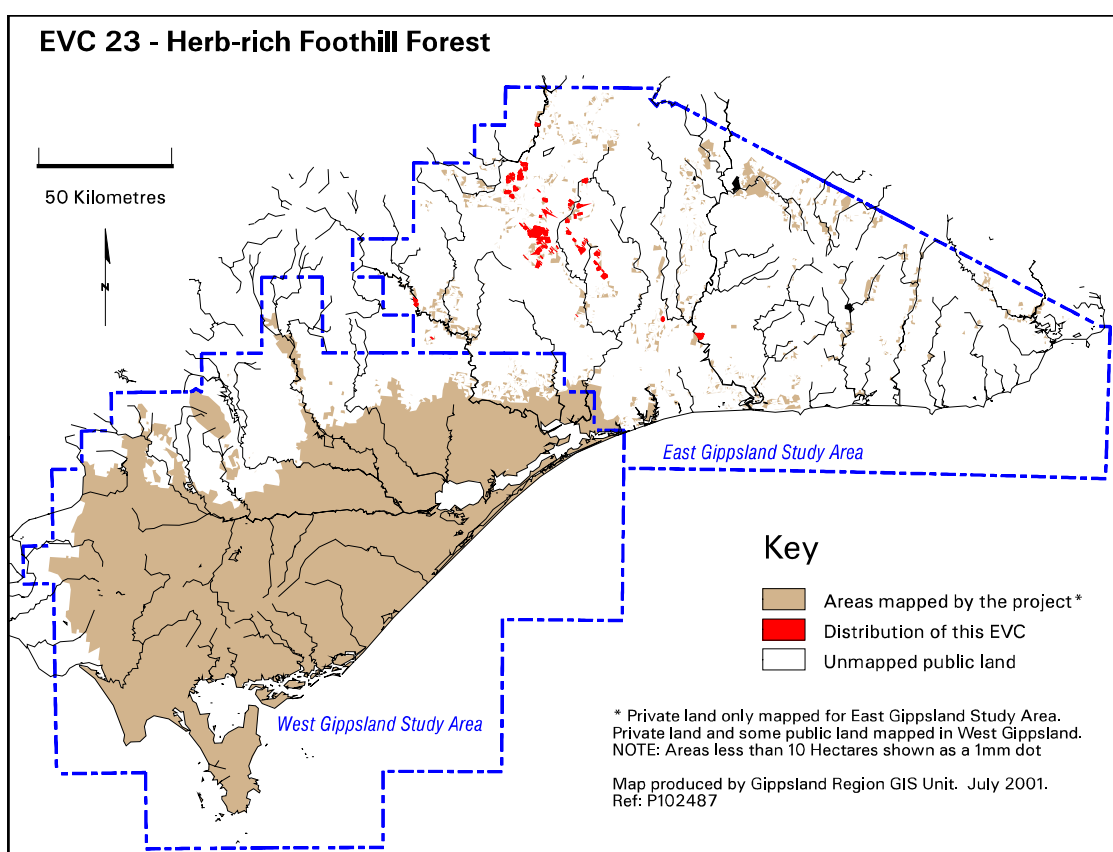
## Gippsland Vegetation Types: Ecological Vegetation Classes (EVC's)

EVC description derived from Davies et.al (2001) Ecological Vegetation Class Mapping at 1:25 000 in Gippsland.

### **EVC 23 Herb-rich Foothill Forest**

Occurs on relatively fertile, well drained soils on a range of rock types in low rainfall areas. Commonly occupies easterly and southerly aspects, including gullies. An open forest or woodland with a small tree layer over a sparse shrub layer. A herb-rich ground layer with a range of forbs and grasses characterises this EVC.

|   |   |
|---|---|
| <b>Elevation (metres above sea level)</b> | 600-800   |
| <b>Average rainfall p.a. (mm)</b>         | 400-1000  |
| <b>Topography</b>                         | Upper and lower slopes, spurs, gullies  |
| <b>Geology</b>                            | Ordovician biotite schist and gneiss  |
| <b>Soils</b>                              | Clay loams  |
| <b>Related/adjacent EVCs/FCs</b>          | Damp Forest   |
| <b>Present land use</b>                   | Agriculture, nature conservation  |
| <b>Present distribution</b>               | Omeo-Swifts Creek areas   |
| <b>Examples of sites/quadrats/lists</b>   | Intersection of Burwood Road and Dead Bird Spur Track southwest of Swifts Creek; off Bingo Tice Road northwest of Omeo; off Swifts Ck. - Omeo Road at Cassilis. |
| <b>Total Area(ha)/ Number of polygons</b> | 2,397/169   |



### **Vegetation structure/floristics:**

The overstorey is dominated by Broad-leaved Peppermint *Eucalyptus dives* with Brittle Gum *E. mannifera*. The understorey consists of Shiny Cassinia *Cassinia longifolia*, Silver Wattle *Acacia dealbata* and Blackwood *A. melanoxylon*. Manna Gum *E. viminalis* occurs on lower slopes where the understorey consists of Silver Wattle *Acacia dealbata* and 2 – 4m tall shrubs of Common Cassinia *Cassinia aculeata*, Hazel Pomaderris *Pomaderris aspera* and Victorian Christmas-bush *Prostanthera lasianthos*.

The understorey is generally of an open structure with scattered small shrubs of Cluster-flower Geebung *Persoonia confertiflora*, Grey Guinea-flower *Hibbertia obtusifolia*, Daphne Heath *Brachyloma daphnoides* and Austral Indigo *Indigofera australis* present on drier sites. Sites containing Manna Gum *Eucalyptus viminalis* have Prickly Current-bush *Coprosma quadrifida* and Rough Tree-fern *Cyathea australis* in the understorey.

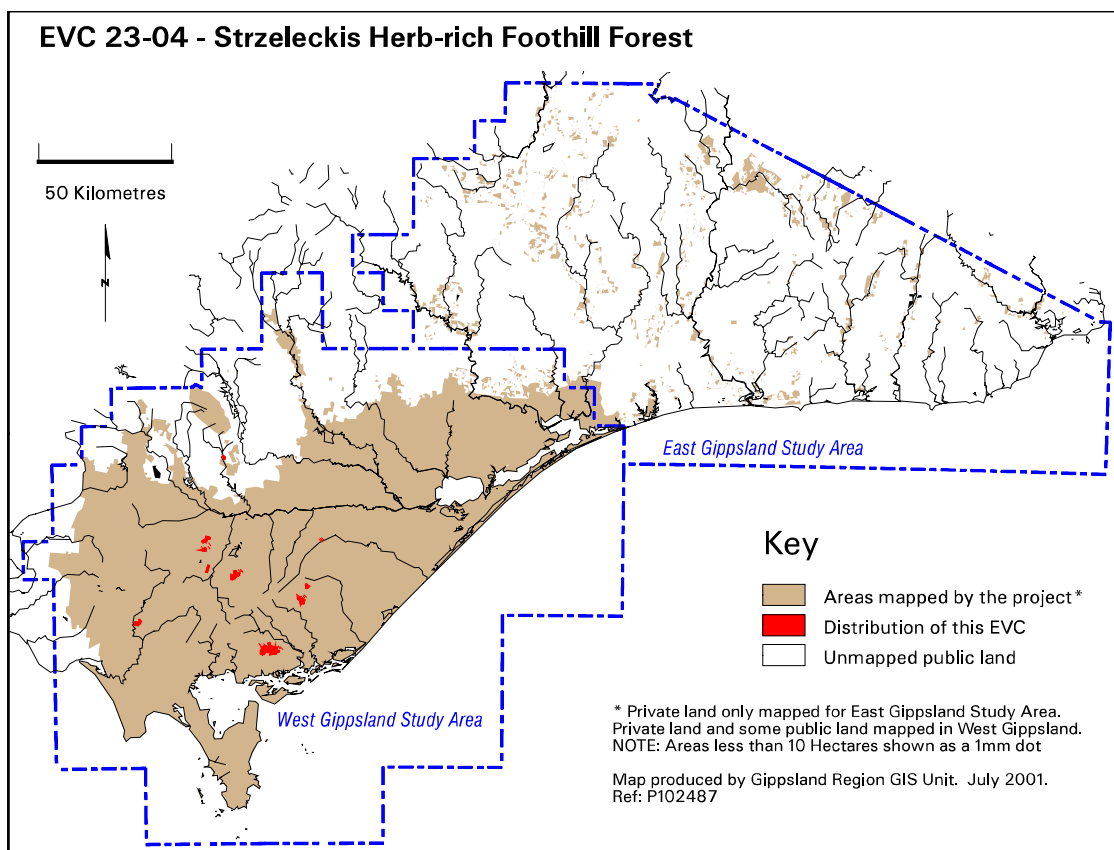
The groundlayer is dominated by herbs including Prickly Starwort *Stellaria pungens*, Common Woodruff *Asperula conferta*, Small-leaf Bramble *Rubus parvifolius*, Austral Bear's-ears *Cymbonotus preissianus*, Honey-pots *Acrotriche serrulata*, Common Raspwort *Gonocarpus tetragynus*, Small St John's Wort *Hypericum gramineum* and Common Woodrush *Luzula meridionalis*. On the lower slopes where Manna Gum *Eucalyptus viminalis* is present, herbs include Golden Everlasting *Bracteantha bracteata*, Stinking Pennywort *Hydrocotyle laxiflora*, Kidney-weed *Dichondra repens*, Showy Violet *Viola betonicifolia* and Prickly Starwort *Stellaria pungens*. Also present on the lower slopes are Tall Sedge *Carex appressa* and Short-stem Sedge *C. breviculmis*.

Grasses generally present include Grey Tussock-grass *Poa sieberiana*, Common Tussock-grass *P. labillardierei*, Weeping grass *Microlaena stipoides* var. *stipoides* and Wallaby-grass *Austrodanthonia* spp. On the drier sites, Common Wheat-grass *Elymus scaber* var. *scaber* and Kangaroo Grass *Themeda triandra* occur.

Where this EVC abuts pastured areas, exotic pasture grasses such as Yorkshire Fog *\*Holcus lanatus*, and shrubs including Briar Rose *\*Rosa rubiginosa* and Blackberry *\*Rubus polyanthemos* may be present.

#### **Floristic Community 23-04 *Strzeleckis* Herb-rich Foothill Forest**

|   |   |
|---|---|
| <b>Elevation (metres above sea level)</b> | <240  |
| <b>Average rainfall p.a. (mm)</b>         | 800-1000  |
| <b>Topography</b>                         | Slopes, gullies, crests, spurs  |
| <b>Geology</b>                            | Tertiary basalt, Cretaceous mudstone, sandstone, siltstone  |
| <b>Soils</b>                              | Fertile, well-drained clay loams and loams  |
| <b>Related/adjacent EVCs/FCs</b>          | Damp Forest, <i>Tussocky</i> Herb-rich Foothill Forest, <i>South Gippsland</i> Plains Grassy Forest and Lowland Forest.     |
| <b>Present land use</b>                   | Agriculture, timber harvesting, recreation  |
| <b>Present distribution</b>               | Lower rainfall areas on the margins of the <i>Strzelecki</i> ranges and high rainfall areas such as Boolarra and Thorpdale. |
| <b>Examples of sites/quadrats/lists</b>   | Beilby's Rd, Leongatha (U23432), Mill Rd., Alberton West State Forest (U23224)  |
| <b>Total Area(ha)/ Number of polygons</b> | 1,380/62  |



#### **Vegetation: structure/floristics:**

*Strzeleckis* Herb-rich Foothill Forest is typically dominated by Messmate *Eucalyptus obliqua*, Mountain Grey Gum *E. cypellocarpa* and Narrow-leaf Peppermint *E. radiata* but may also include Yellow Stringybark *E. muelleriana*, Gippsland Blue Gum *E. globulus* subsp. *pseudoglobulus*, and even Silver-top *E. sieberi* in extreme cases.

The understorey includes the shrubs Varnish Wattle *Acacia verniciflua*, Sticky Wattle *A. howittii*, Hop Goodenia *Goodenia ovata*, Prickly Currant-bush *Coprosma quadrifida*, Common Cassinia *Cassinia aculeata*, Snow Daisy-bush *Olearia lirata*, Tree Everlasting *Ozothamnus ferrugineus* and Common Raspwort *Gonocarpus tetragynus*. The climbers Mountain Clematis *Clematis aristata* and Wonga Vine *Pandorea pandorana* are often present whilst the ubiquitous Austral Bracken *Pteridium esculentum* is also frequent.

The herb-rich ground cover includes grasses typical of drier habitats such as Common Tussock-grass *Poa labillardierei*, Short-hair Plume-grass *Dichelachne micrantha*, Weeping Grass *Microlaena stipoides* var. *stipoides*, Forest Wire-grass *Tetrarrhena juncea*, Common Hedgehog-grass *Echinopogon ovatus*, Stiped Wallaby-grass *Austrodanthonia racemosa* var. *racemosa* and Reed Bent-grass *Deyeuxia quadriseta*. Common herbs are Ivy-leaf Violet *Viola hederacea*, Common Bottle-daisy *Lagenophora stipitata*, Hairy Speedwell *Veronica calycina*, Bidgee-widgee *Acaena novae-zelandiae*, Twining Glycine *Glycine clandestina*, Small St John's Wort *Hypericum gramineum*, Small Poranthera *Poranthera microphylla*, and Yellow Wood-sorrel *Oxalis corniculata* sl.

*Strzeleckis* Herb-rich Foothill Forest differs from Damp Forest by the absence of tree-ferns and 'wet fern' understorey species, reflecting its drier habitat. Other species indicative of dry conditions are Thatch Saw-sedge *Gahnia radula*, Common Heath *Epacris impressa* and Wattle Mat-rush *Lomandra filiformis*.

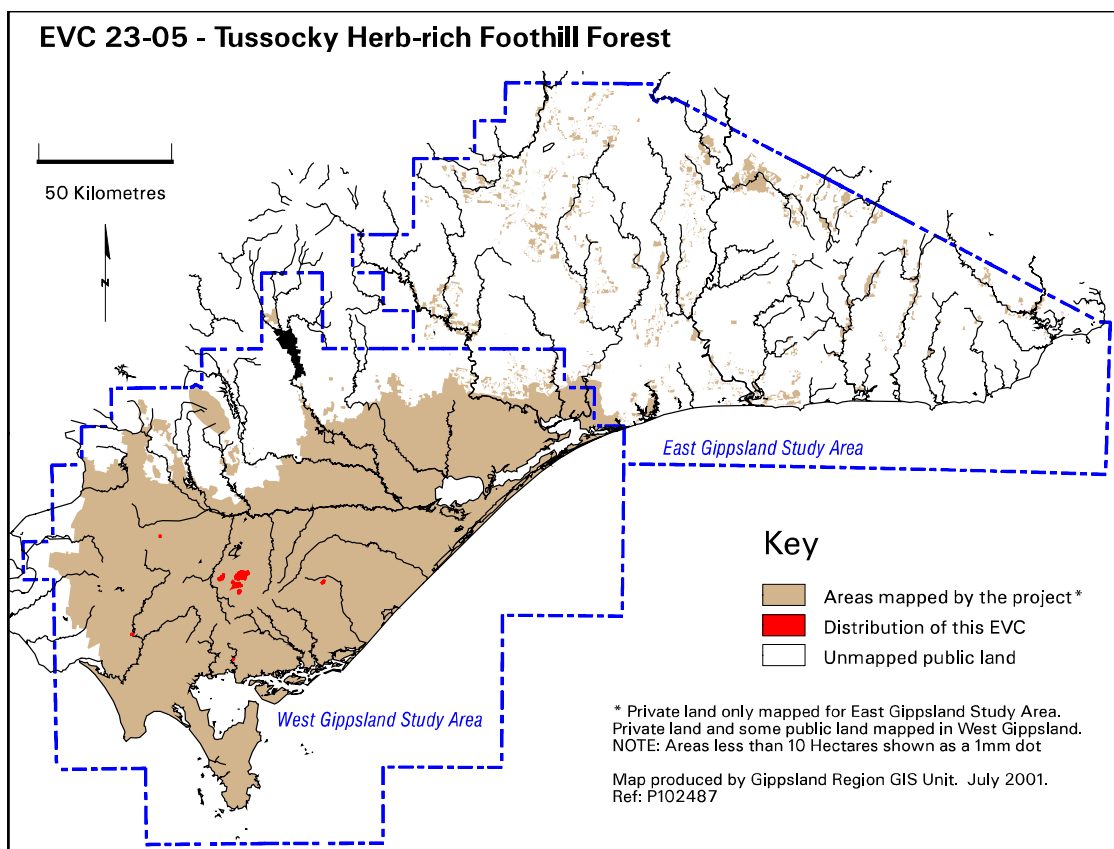
#### **Comments:**

*Strzeleckis* Herb-rich Foothill Forest is on the drier side of Damp Forest and *Tussocky* Herb-rich Foothill Forest and eventually merges into Lowland Forest as topographic exposure increases. A number of drier species found in this community which are not found in the damper, adjacent EVCs include Thatch Saw-sedge *Gahnia radula*, Common Heath *Epacris impressa*, Wattle Mat-rush *Lomandra filiformis*, Spiny-headed Mat-rush *Lomandra longifolia* and Hyacinth Orchid *Dipodium punctatum*.

The relatively dry nature of this EVC is reflected in the absence of ‘wet’ ground-ferns such as Common Ground-fern *Calochlaena dubia* and Mother Shield-fern *Polystichum proliferum*. *Strzeleckis* Herb-rich Foothill Forest is also closely related, at the drier end, to the dry forest EVCs of *South Gippsland* Plains Grassy Forest and Lowland Forest.

#### Floristic Community 23-05 *Tussocky* Herb-rich Foothill Forest

|   |   |
|---|---|
| <b>Elevation (metres above sea level)</b> | <500  |
| <b>Average rainfall p.a. (mm)</b>         | 900-1000  |
| <b>Topography</b>                         | Spurs and slopes  |
| <b>Geology</b>                            | Lower Cretaceous mudstone, sandstone, siltstone                               |
| <b>Soils</b>                              | clay loam to loam   |
| <b>Related/adjacent EVCs/FCs</b>          | Damp Forest, <i>Strzeleckis</i> Herb-rich Foothill Forest                     |
| <b>Present land use</b>                   | Agriculture, softwood and hardwood plantation, recreation                     |
| <b>Present distribution</b>               | Margins of the Strzelecki ranges  |
| <b>Examples of sites/quadrats/lists</b>   | Agnes Falls Reserve, Jumbuck Rd, south-east of Morwell National Park (U23404) |
| <b>Total Area(ha)/ Number of polygons</b> | 456/35  |



#### Vegetation: structure/floristics:

Gippsland Blue Gum *Eucalyptus globulus* subsp. *pseudoglobulus* dominates the overstorey but Mountain Grey Gum *E. cytellocarpa*, Manna Gum *E. viminalis*, Messmate *E. obliqua* or even Mountain Ash *E. regnans* which grows in associated Damp or Wet Forest can be present.

The understorey includes Blackwood *Acacia melanoxylon* and less frequently Silver Wattle *A. dealbata* over scattered shrubs and a herb-rich, grassy ground cover that is also often weedy. Common shrubs include Tree Everlasting *Ozothamnus ferrugineus*, Prickly Currant-bush *Coprosma quadrifida*, Common Cassinia *Cassinia aculeata*, and Hazel Pomaderris *Pomaderris aspera*.

A suite of herbs are present in the ground cover including Fireweed Groundsel *Senecio linearifolius*, Bidgeewidgee *Acaena novae-zelandiae*, Cinquefoil Cranesbill *Geranium potentilloides*, Ivy-leaf Violet *Viola hederacea*,

Common Cotula *Cotula australis*, Creeping Cudweed *Euchiton gymnocephalus*, the weeds Greater Plantain \**Plantago major*, Self-heal \**Prunella vulgaris*, Common Vetch \**Vicia sativa* and numerous other ubiquitous species. Common grasses are Common Hedgehog-grass *Echinopogon ovatus*, Common Tussock-grass *Poa labillardierei*, and Weeping Grass *Microlaena stipoides* var. *stipoides*. Other species often present include Austral Bracken *Pteridium esculentum*, Mother Shield-fern *Polystichum proliferum* and the vine Mountain Clematis *Clematis aristata*.



*Tussocky* Herb-rich Foothill Forest, southern end of Morwell National Park. Photo: John Davies 1997.



*Tussocky* Herb-rich Foothill Forest, southern end of Morwell National Park. Photo: John Davies 1997.

## Gippsland species list including species frequency and fidelity.

**Fidelity:** Rating of faithfulness of a species to an EVC or Floristic Community. Highest fidelity rating indicated by an “F” ie species only recorded in respective group.

**% Frequency:** Percentage occurrence of a species/taxa in an EVC or Floristic Community – **NB. Species highlighted in red are the most frequent and important.**

\* = weed ie: non native.

Rarity categories from NRE’s Flora Information System (FIS).

### EVC 23-04: STRZELECKIS HERB-RICH FOOTHILL FOREST

| Lifeform                     | Scientific Name                                       | Common Name                                      | % Fr               | F   |    |
|------------------------------|---|--|--------------------|-----|----|
| Overstorey Trees             | <i>Eucalyptus obliqua</i>                             | Messmate   | 64                 | 7   |    |
|                              | <i>Eucalyptus cypellocarpa</i>                        | Mountain Grey Gum                                | 45                 | 11  |    |
|                              | <i>Eucalyptus radiata</i> s.l.                        | Narrow-leaf Peppermint                           | 40                 | 3   |    |
|                              | <i>Eucalyptus muelleriana</i>                         | Yellow Stringybark                               | 24                 | 8   |    |
|                              | <i>Eucalyptus globulus</i> ssp. <i>pseudoglobulus</i> | Gippsland Blue Gum                               | 17                 | 5   |    |
|                              | <i>Eucalyptus sieberi</i>                             | Silver-top                                       | 12                 | 13  |    |
| Understorey Trees            | <i>Acacia melanoxylon</i>                             | Blackwood  | 21                 | 1   |    |
| Shrubs                       | <i>Acacia verniciflua</i>                             | Varnish Wattle                                   | 57                 | 21  |    |
|                              | <i>Goodenia ovata</i>                                 | Hop Goodenia                                     | 57                 | 11  |    |
|                              | <i>Coprosma quadrifida</i>                            | Prickly Currant-bush                             | 55                 | 4   |    |
|                              | <i>Cassinia aculeata</i>                              | Common Cassinia                                  | 52                 | 4   |    |
|                              | <i>Olearia lirata</i>                                 | Snow Daisy-bush                                  | 40                 | 4   |    |
|                              | <i>Ozothamnus ferrugineus</i>                         | Tree Everlasting                                 | 38                 | 4   |    |
|                              | <i>Epacris impressa</i>                               | Common Heath                                     | 29                 | 1   |    |
|                              | <i>Cassinia longifolia</i>                            | Shiny Cassinia                                   | 26                 | 6   |    |
|                              | <i>Acacia verticillata</i>                            | Prickly Moses                                    | 21                 | 3   |    |
|                              | <i>Pittosporum undulatum</i>                          | Sweet Pittosporum                                | 19                 | 3   |    |
|                              | <i>Leptospermum continentale</i>                      | Prickly Tea-tree                                 | 17                 | 0.6 |    |
|                              | Vines/Climbers  | Rr <i>Acacia howittii</i>                        | Sticky Wattle      | 7   | 42 |
|                              |   | <i>Clematis aristata</i>                         | Mountain Clematis  | 86  | 6  |
|                              |   | <i>Billardiera scandens</i> var. <i>scandens</i> | Common Apple-berry | 55  | 7  |
|                              |   | <i>Glycine clandestina</i>                       | Twining Glycine    | 45  | 8  |
|                              | <i>Pandorea pandorana</i>                             | Wonga Vine                                       | 36                 | 7   |    |
|                              | <i>Comesperma volubile</i>                            | Love Creeper                                     | 19                 | 1   |    |
| Herbs                        | <i>Viola hederacea</i>                                | Ivy-leaf Violet                                  | 88                 | 5   |    |
|                              | <i>Lagenophora stipitata</i>                          | Common Bottle-daisy                              | 69                 | 3   |    |
|                              | <i>Veronica calycina</i>                              | Hairy Speedwell                                  | 62                 | 14  |    |
|                              | <i>Gonocarpus tetragynus</i>                          | Common Raspwort                                  | 59                 | 2   |    |
|                              | <i>Acaena novae-zelandiae</i>                         | Bidgee-widgee                                    | 48                 | 2   |    |
|                              | <i>Hypericum gramineum</i>                            | Small St John’s Wort                             | 43                 | 3   |    |
|                              | <i>Poranthera microphylla</i>                         | Small Poranthera                                 | 40                 | 3   |    |
|                              | <i>Oxalis corniculata</i> s.l.                        | Yellow Wood-sorrel                               | 38                 | 2   |    |
|                              | <i>Hydrocotyle laxiflora</i>                          | Stinking Pennywort                               | 33                 | 3   |    |
|                              | <i>Senecio hispidulus</i>                             | Rough Fireweed                                   | 31                 | 10  |    |
|                              | <i>Geranium potentilloides</i>                        | Cinquefoil Cranesbill                            | 31                 | 2   |    |
|                              | <i>Euchiton gymnocephalus</i>                         | Creeping Cudweed                                 | 29                 | 3   |    |
|                              | <i>Galium propinquum</i>                              | Maori Bedstraw                                   | 24                 | 7   |    |
|                              | <i>Plantago debilis</i>                               | Shade Plantain                                   | 24                 | 6   |    |
|                              | <i>Stellaria pungens</i>                              | Prickly Starwort                                 | 19                 | 8   |    |
|                              | <i>Senecio pinnatifolius</i>                          | Variable Groundsel                               | 19                 | 2   |    |
|                              | <i>Dichondra repens</i>                               | Kidney-weed                                      | 19                 | 0.6 |    |
| <i>Hydrocotyle hirta</i>     | Hairy Pennywort                                       | 17   | 1                  |     |    |
| <i>Stackhousia monogyna</i>  | Creamy Candles  | 17   | 15                 |     |    |
| <i>Senecio linearifolius</i> | Fireweed Groundsel                                    | 14   | 2                  |     |    |
| Grasses                      | <i>Poa</i> sp.  | Tussock Grass                                    | 93                 | 2   |    |

| <b>Lifeform</b> | <b>Scientific Name</b>                               | <b>Common Name</b>     | <b>% Fr</b> | <b>F</b> |
|-----------------|--|------------------------|-------------|----------|
|                 | <i>Microlaena stipoides</i> var. <i>stipoides</i>    | Weeping Grass          | 71          | 3        |
|                 | <i>Tetrarrhena juncea</i>                            | Forest Wire-grass      | 57          | 5        |
|                 | <i>Dichelachne micrantha</i>                         | Short-hair Plume-grass | 43          | 15       |
|                 | <i>Austrodanthonia racemosa</i> var. <i>racemosa</i> | Stiped Wallaby-grass   | 31          | 6        |
|                 | <i>Deyeuxia quadriseta</i>                           | Reed Bent-grass        | 31          | 5        |
|                 | <i>Echinopogon ovatus</i>                            | Common Hedgehog-grass  | 24          | 5        |
| Sedges          | <i>Gahnia radula</i>                                 | Thatch Saw-sedge       | 52          | 2        |
| Ferns           | <i>Pteridium esculentum</i>                          | Austral Bracken        | 83          | 2        |
| Other           | <i>Lomandra filiformis</i>                           | Wattle Mat-rush        | 50          | 2        |
|                 | <i>Lomandra longifolia</i>                           | Spiny-headed Mat-rush  | 36          | 1        |
| Orchids         | <i>Dipodium punctatum</i>                            | Hyacinth Orchid        | 14          | 21       |
| Weeds           | * <i>Hypochoeris radicata</i>                        | Cat's Ear              | 81          | 2        |
|                 | * <i>Holcus lanatus</i>                              | Yorkshire Fog          | 24          | 1        |
|                 | * <i>Anthoxanthum odoratum</i>                       | Sweet Vernal-grass     | 21          | 3        |
|                 | * <i>Rubus vestitus</i>                              | Blackberry             | 19          | 5        |
|                 | * <i>Rubus fruticosus</i> spp. agg.                  | Blackberry             | 5           | 0.7      |

**EVC 23-05: TUSSOCKY HERB-RICH FOOTHILL FOREST**

| <b>Lifeform</b>   | <b>Scientific Name</b>           | <b>Common Name</b>    | <b>%Fr</b> | <b>F</b> |
|-------------------|----------------------------------|-----------------------|------------|----------|
| Overstorey Trees  | <i>Eucalyptus globulus</i>       | Blue Gum              | 53         | 29       |
|                   | <i>Eucalyptus cypellocarpa</i>   | Mountain Grey Gum     | 22         | 4        |
|                   | <i>Eucalyptus viminalis</i>      | Manna Gum             | 20         | 1        |
|                   | <i>Eucalyptus obliqua</i>        | Messmate              | 16         | 1        |
|                   | <i>Eucalyptus regnans</i>        | Mountain Ash          | 8          | 2        |
| Understorey trees | <i>Acacia melanoxylon</i>        | Blackwood             | 76         | 5        |
|                   | <i>Acacia dealbata</i>           | Silver Wattle         | 31         | 7        |
| Shrubs            | <i>Ozothamnus ferrugineus</i>    | Tree Everlasting      | 78         | 9        |
|                   | <i>Coprosma quadrifida</i>       | Prickly Currant-bush  | 65         | 4        |
|                   | <i>Cassinia aculeata</i>         | Common Cassinia       | 51         | 4        |
|                   | <i>Pomaderris aspera</i>         | Hazel Pomaderris      | 37         | 5        |
|                   | <i>Pittosporum undulatum</i>     | Sweet Pittosporum     | 27         | 5        |
|                   | <i>Acacia verticillata</i>       | Prickly Moses         | 22         | 3        |
|                   | <i>Olearia argophylla</i>        | Musk Daisy-bush       | 20         | 3        |
|                   | <i>Acacia verniciflua</i>        | Varnish Wattle        | 18         | 4        |
|                   | <i>Olearia lirata</i>            | Snow Daisy-bush       | 18         | 1        |
|                   | <i>Rubus parvifolius</i>         | Small-leaf Bramble    | 20         | 7        |
| Sedges            | <i>Lepidosperma elatius</i>      | Tall Sword-sedge      | 29         | 10       |
|                   | <i>Carex appressa</i>            | Tall Sedge            | 33         | 4        |
| Climbers/         | <i>Clematis aristata</i>         | Mountain Clematis     | 86         | 7        |
| Vines             | <i>Pandorea pandorana</i>        | Wonga Vine            | 22         | 4        |
| Herbs             | <i>Senecio linearifolius</i>     | Fireweed Groundsel    | 84         | 18       |
|                   | <i>Acaena novae-zelandiae</i>    | Bidgee-widgee         | 84         | 5        |
|                   | <i>Geranium potentilloides</i>   | Cinquefoil Cranesbill | 74         | 4        |
|                   | <i>Vicia sativa</i>              | Common Vetch          | 47         | 137      |
|                   | <i>Viola hederacea</i>           | Ivy-leaf Violet       | 47         | 2        |
|                   | <i>Cotula australis</i>          | Common Cotula         | 45         | 7        |
|                   | <i>Echinopogon ovatus</i>        | Common Hedgehog-grass | 43         | 11       |
|                   | <i>Euchiton gymnocephalus</i>    | Creeping Cudweed      | 41         | 4        |
|                   | <i>Hydrocotyle laxiflora</i>     | Stinking Pennywort    | 37         | 4        |
|                   | <i>Epilobium billardierianum</i> | Robust Willow-herb    | 33         | 9        |
|                   | <i>Urtica incisa</i>             | Scrub Nettle          | 33         | 5        |
|                   | <i>Cynoglossum latifolium</i>    | Forest Hound's-tongue | 31         | 11       |
|                   | <i>Veronica calycina</i>         | Hairy Speedwell       | 31         | 6        |
|                   | <i>Dichondra repens</i>          | Kidney-weed           | 27         | 0.8      |
|                   | <i>Hypericum japonicum</i>       | Matted St John's Wort | 25         | 25       |
|                   | <i>Wahlenbergia gracilis</i>     | Sprawling Bluebell    | 25         | 2        |
|                   | <i>Stellaria flaccida</i>        | Forest Starwort       | 23         | 2        |

| <b>Lifeform</b> | <b>Scientific Name</b>                            | <b>Common Name</b>    | <b>%Fr</b> | <b>F</b> |
|-----------------|---|-----------------------|------------|----------|
|                 | <i>Gonocarpus humilis</i>                         | Shade Raspwort        | 22         | 10       |
|                 | <i>Galium propinquum</i>                          | Maori Bedstraw        | 22         | 7        |
|                 | <i>Lagenophora stipitata</i>                      | Common Bottle-daisy   | 22         | 0.7      |
|                 | <i>Desmodium gunnii</i>                           | Southern Tick-trefoil | 20         | 10       |
|                 | <i>Hydrocotyle hirta</i>                          | Hairy Pennywort       | 20         | 1        |
|                 | <i>Ajuga australis</i>                            | Austral Bugle         | 16         | 6        |
|                 | <i>Sigesbeckia orientalis</i>                     | Indian Weed           | 12         | 11       |
| Tree-ferns      | <i>Cyathea australis</i>                          | Rough Tree-fern       | 16         | 2        |
| Ferns           | <i>Pteridium esculentum</i>                       | Austral Bracken       | 78         | 2        |
|                 | <i>Polystichum proliferum</i>                     | Mother Shield-fern    | 43         | 6        |
|                 | <i>Calochlaena dubia</i>                          | Common Ground-fern    | 16         | 8        |
| Grasses         | <i>Poa</i> spp.                                   | Tussock Grass         | 94         | 2        |
|                 | <i>Microlaena stipoides</i> var. <i>stipoides</i> | Weeping Grass         | 65         | 2        |
|                 | <i>Tetrarrhena juncea</i>                         | Forest Wire-grass     | 18         | 1        |
| Weeds           | * <i>Hypochoeris radicata</i>                     | Cat's Ear             | 84         | 2        |
|                 | * <i>Anthoxanthum odoratum</i>                    | Sweet Vernal-grass    | 80         | 16       |
|                 | * <i>Cirsium vulgare</i>                          | Spear Thistle         | 80         | 6        |
|                 | * <i>Centaureum erythraea</i>                     | Common Centaury       | 61         | 4        |
|                 | * <i>Senecio jacobaea</i>                         | Ragwort               | 57         | 10       |
|                 | * <i>Prunella vulgaris</i>                        | Self-heal             | 55         | 21       |
|                 | * <i>Plantago major</i>                           | Greater Plantain      | 51         | 99       |
|                 | * <i>Rubus fruticosus</i> spp. agg.               | Blackberry            | 49         | 10       |
|                 | * <i>Oxalis corniculata</i> s.l.                  | Yellow Wood-sorrel    | 47         | 3        |
|                 | * <i>Anagallis arvensis</i>                       | Pimpernel             | 31         | 3        |
|                 | * <i>Holcus lanatus</i>                           | Yorkshire Fog         | 31         | 2        |
|                 | * <i>Sonchus oleraceus</i>                        | Sow-thistle           | 29         | 2        |
|                 | * <i>Plantago lanceolata</i>                      | Ribwort               | 22         | 5        |
|                 | * <i>Rumex crispus</i>                            | Curled Dock           | 16         | 12       |
|                 | * <i>Acetosella vulgaris</i>                      | Sheep Sorrel          | 14         | 4        |