

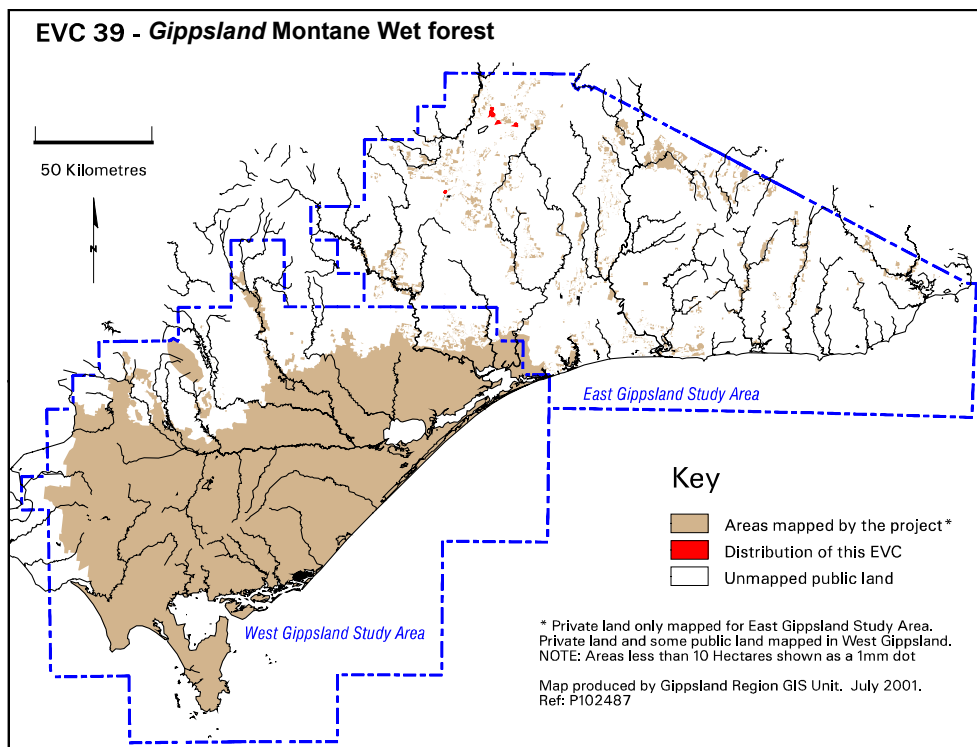
EVC 39 Montane Wet Forest

Occurs on deep, fertile, well-drained soils on the most sheltered wet sites such as gully heads and south-facing slopes at montane elevations in high rainfall areas. A tall, open, eucalypt forest over a secondary tree layer with tall rainforest shrubs/small trees over a dense ground cover of ferns.

Description below is from Commonwealth of Australia and NRE (1999).

Floristic Community 39-01 Gippsland Montane Wet Forest

Elevation (metres above sea level)	800-1200
Average rainfall p.a. (mm)	Very high effective precipitation due to extensive periods of cloud cover and fog drip
Topography	Protected south to south-east facing montane slopes and gullies
Geology	Ordovician granodiorite and sediments
Soils	Deep, fertile, well-drained, friable loams and clay loams
Related/adjacent EVCs/FCs	Montane Damp Forest, Montane Riparian Thicket, Cool Temperate Rainforest, Unclassified Moist Forest
Present land use	Nature conservation, recreation, forestry
Present distribution	Small areas on granodiorite around Mt Baldhead, areas on Ordovician sediments around Mt. Phipps
Examples of sites/quadrats/lists	Above Livingstone Creek SW of Mt. Livingstone, north of Mt. Phipps on Jim and Jack Tk., south of Mt. Phipps on Birregun Tk., Groves Gap Rd and Carneek Tk.
Total Area (ha)/ Number of polygons	181/11
Group analysis no.	Not available for East Gippsland Study Area



Vegetation: structure/floristics:

A tall forest dominated by Alpine Ash *Eucalyptus delegatensis* with an understorey tree layer of Silver Wattle *Acacia dealbata* and Southern Sassafras *Atherosperma moschatum*. Occasional tall shrubs grow below this including Banyalla *Pittosporum bicolor* and Mountain Tea-tree *Leptospermum grandifolium* and a dense layer of Soft Tree-fern *Dicksonia antarctica*. These strata combine to

provide shade and protection for a fern-dominated ground layer which includes Hard Water-fern *Blechnum watsii* and Lance Water-fern *B. chambersii*. Scattered herbs occur in gaps in the ground layer including Shade Nettle *Australina pusilla* and Delicate Hook-sedge *Uncinia tenella*.

Comments:

High effective precipitation due to long periods of cloud cover and associated fog drip. Also mapped as “Unclassified Moist Forest” on the montane slopes of the Baw Baws prior to future mapping of Cool Temperate Mixed Forest by Forests Victoria in their project listed as an action in the Central Highlands management plan NRE (1998).