

Gippsland Vegetation Types: Ecological Vegetation Classes (EVC's)

EVC description derived from Davies et.al (2001) Ecological Vegetation Class Mapping at 1:25 000 in Gippsland.

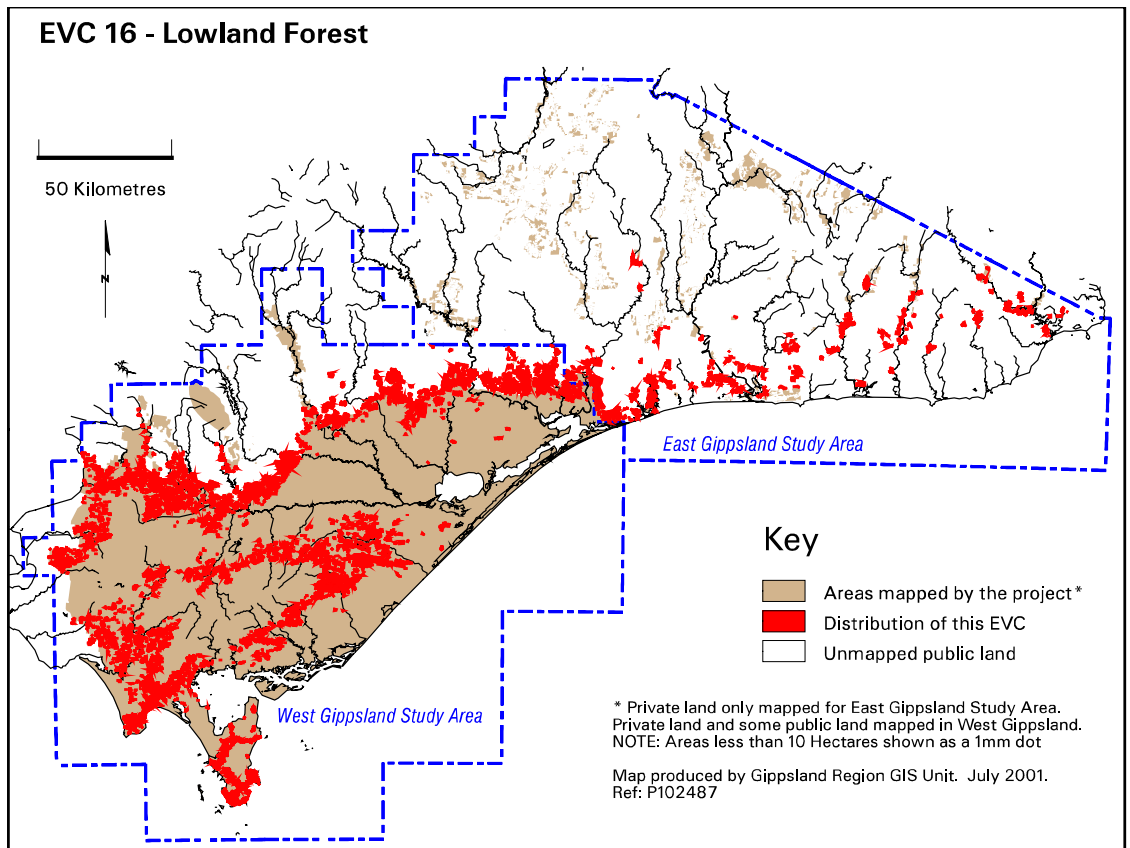
EVC 16 Lowland Forest

This widespread dry forest type grows on soils of moderate fertility on the foothills of the Great Dividing Range through to the foothills of the Strzelecki ranges and Wilsons Promontory National Park to far East Gippsland.



Lowland Forest Gippsland. Photo: John Davies.

Elevation (metres above sea level)	10-500 although the majority is <250
Average rainfall p.a. (mm)	<1200
Topography	Lowland plains, drier aspects of foothills
Geology	Variable, ranging from Tertiary and Quaternary deposits to Devonian granite and Cretaceous sediments
Soils	Highly variable profiles of moderate fertility from clay to loam to sandy topsoil
Related/adjacent EVCs/FCs	Damp Forest, Shrubby Foothill Forest, <i>Gippsland</i> Plains Grassy Woodland, Heathy Woodland, Herb-rich Foothill Forest
Present land use	Nature conservation, recreation, agriculture, timber harvesting, gravel and sand extraction
Present distribution	Widespread from the moderately fertile areas of the lowland plains of Gippsland to the foothills of the Strzelecki ranges and Great Dividing Range to Wilsons Promontory National Park to far East Gippsland
Examples of sites/quadrats/lists	Rees Rd., Hill End (U23566), Chettles Lane, north of Fernbank, Onley's Rd., Gormandale (U23275)
Total Area(ha)/ Number of polygons	90,745/5,426



Vegetation: structure/floristics:

A very widespread dry forest vegetation type that is found in the foothills of the Great Dividing Range from East Gippsland to the western edge of the study area as well as the foothills of the Strzelecki ranges and Wilsons Promontory National Park. The understorey varies from shrubby to heathy to sedgy and may even be grassy as fertility increases. It occurs mostly in the intermediate rainfall areas of the foothills where it occupies the dry aspects and dry crests where incident radiation is greatest but may also occur in the lower rainfall/lower fertility areas of the Gippsland plains. In the foothill areas, Damp Forest develops immediately down slope where sufficient topographic protection is available.

Lowland Forest merges into *Gippsland* Plains Grassy Woodland or *South Gippsland* Plains Grassland as fertility increases and with decreasing fertility on the most infertile sands, Heathy Woodland and Sand Heathland occur. With increasing topographic protection, it merges into Herb-rich Foothill Forest and then into Damp Forest. With increasing drought susceptibility associated with shallower, rockier soils on dry, stony crests and slopes, it merges into Shrubby Dry Forest or Grassy Dry Forest in the relatively low rainfall and moderate fertility areas.

To aid identification of Lowland Forest a range of vegetation types need to be described, ranging from where Lowland Forest floristically approaches Damp Forest (at the moister end of the gradient) and Herb-rich Foothill Forest through to the driest forms.

Type 1:

This widespread form is found in West and South Gippsland and is commonly dominated by Messmate *Eucalyptus obliqua* and Narrow-leaf Peppermint *E. radiata* (or the closely related species *Gippsland Peppermint E. croajingolensis*). Other eucalypts that may be present include Yellow Stringybark *E. muelleriana* (in South Gippsland), Silver-top Ash *E. sieberi*, Yertchuk *E. consideniana*, Mountain Grey Gum *E. cypellocarpa* and Swamp Gum *E. ovata* in the poorest drained areas.

Three species with a high fidelity but low overall frequency to this EVC type are Hairpin Banksia *Banksia spinulosa* var. *cunninghamii*, Prickly Bush-pea *Pultenaea juniperina* and Bushy Needlewood *Hakea decurrens*.

The understorey is typically dry and partially heathy in character and includes a range of shrubby wattle species such as Prickly Moses *A. verticillata*, and Narrow-leaf Wattle *A. mucronata*. Other shrubs often present are Hop

Goodenia *Goodenia ovata*, Snow Daisy Bush *Olearia lirata*, Cassinia *Cassinia* spp., and the prickly-leaved shrubs such as Prickly Tea-tree *Leptospermum continentale*, Golden Bush Pea *Pultenaea gunnii*, Wiry Bauera *Bauera rubioides* and Common Heath *Epacris impressa*. Wire-grass *Tetrarrhena juncea*, Weeping Grass *Microlaena stipoides* var. *stipoides*, Austral Bracken *Pteridium esculentum*, Variable Sword-sedge *Lepidosperma laterale*, Spiny-headed Mat-rush *Lomandra longifolia*, Wattle Mat-rush *L. filiformis*, Screw Fern *Lindsaea linearis*, Common Apple-berry *Billardiera scandens*, Paroo Lily *Dianella caerulea*, Small Grass-tree *Xanthorrhoea minor* subsp. *lutea* and tussocks of *Poa* spp. are also present. Thatch Saw-sedge *Gahnia radula*, is also found and is sometimes locally dominant. Common groundcover species include Ivy-leaf Violet *Viola hederacea*, Common Bottle-daisy *Lagenophora stipitata*, Tall Sundew *Drosera peltata* subsp. *auriculata* and Small St John's Wort *Hypericum gramineum*.

In East Gippsland, Coast Grey Box *E. bosistoana* occurs around Cann River in mixture with White Stringybark *E. globoidea* and Mountain Grey Gum *E. cypellocarpa*. Other overstorey species usually associated with Silver-top Ash *E. sieberi* in Lowland Forest in East Gippsland are Red Ironbark *E. tricarpa* which occurs on heavier soils in lower rainfall areas, Gippsland Peppermint *E. croajingolensis* and Red Bloodwood *E. gummifera*. On sandier sites White Stringybark *E. globoidea*, Yertchuck *E. consideniana* and Rough-barked Apple *Angophora floribunda* can also occur with Silver-top Ash. Saw Banksia *Banksia serrata* is often present in the understorey on sandier sites.

The understorey is usually dense with a medium and low shrub layer including Hairpin Banksia *Banksia spinulosa* var. *cunninghamii*, Silver Banksia *B. marginata*, Bushy Needlewood *Hakea decurrens*, Myrtle Wattle *Acacia myrtifolia*, Sunshine Wattle *A. terminalis* and Shrubby Platysace *Platysace lanceolata*. Sedges and lilies are common on heavier soils and include Thatch Saw-sedge *Gahnia radula*, Red-fruit Saw-sedge *G. sieberiana*, Curly-wig *Caustis flexuosa*, Wattle Mat-lily *Lomandra filiformis*, Leafy Purple-flag *Patersonia glabrata* and Small Grass-tree *Xanthorrhoea minor* subsp. *lutea*. Herbs are low in diversity but are sometimes common. Herbs present usually include Hairy Fan-flower *Scaevola ramosissima*, Common Bottle-daisy *Lagenophora stipitata*, Stinking Pennywort *Hydrocotyle laxiflora* and Ivy-leaf Violet *Viola hederacea* s.l. Vines are generally absent from this EVC.

Example: Rees Rd., Hill End (U23566), south-west of Morwell (C22210)

Type 2:

This widespread form is found south of the Princes Highway in South and West Gippsland, especially in the Gormandale area. It develops on a conspicuously loose, light grey to white sandy topsoil over a gravel, clay or sand subsoil that may often include a hardpan. The sandy topsoil promotes the occurrence of various heathy understorey species that reflects the continuous floristic variation between this vegetation type and Heathy Woodland.

This community is commonly dominated by Yertchuk *E. consideniana* and Narrow-leaf Peppermint *E. radiata* but Coast Manna Gum *E. viminalis* subsp. *pryoriana* and Messmate *Eucalyptus obliqua* may also be present.

The shrubby understorey is dominated by Sunshine Wattle *Acacia terminalis*, Burgan *Kunzea ericoides*, Showy Bossiaea *Bossiaea cinerea*, Prickly Tea-tree *Leptospermum continentale*, Common Raspwort, *Gonocarpus tetragynus*, Broom Spurge *Amperea xiphoclada* var. *xiphoclada*, expanses of Austral Bracken *Pteridium esculentum*, Thatch Saw-sedge *Gahnia radula* and scattered trees of Saw Banksia *Banksia serrata*. Other species present are Common Heath *Epacris impressa*, Snow Daisy-bush *Olearia lirata*, and tussocks of *Poa* spp.

Comments:

These areas are often used for gravel and sand extraction and even for cemeteries where the loose sandy topsoil is deepest.

Example: Gormandale area (U23275, O26147)

Type 3:

This community is found as localised remnants across the study area and develops on clay dominated soil profiles. It is characterised by a very species depauperate understorey. The dominant eucalypts are commonly White Stringybark *E. globoidea* and But But *E. bridgesiana* but Silver-leaf Stringybark *E. cephalocarpa* is sometimes present in this Lowland Forest type in the vicinity of Clay Heathland. The litter-dominated understorey contains scattered shrubs of Silver Banksia *Banksia marginata*, Daphne Heath *Brachyloma daphnoides*, Burgan *Kunzea ericoides* and Prickly Tea-tree *Leptospermum continentale*. Other species present include Thatch Saw-sedge

Gahnia radula, Common Raspwort *Gonocarpus tetragynus*, Austral Bracken *Pteridium esculentum* and tussocks of *Poa spp.*

Example: South of Princes Highway, near Perry River (O02069, O02071)

Comments:

On the margins of the Gippsland plains such as in the Valencia Creek area, Forest Red Gum *Eucalyptus tereticornis* sometimes dominates this EVC over a dense Burgan *Kunzea ericoides* understorey. Downslope on more fertile, alluvial valley flats, *Gippsland Plains Grassy Woodland* develops.

Type 4:

This Lowland Forest type is found at Wilsons Promontory National Park and is typically dominated by Messmate *Eucalyptus obliqua*, and includes a range of shrubs in the understorey including Silver Banksia *Banksia marginata*, Hairpin Banksia *Banksia spinulosa* var. *cunninghamii*, Bushy Needlewood *Hakea decurrens*, Prickly Moses *Acacia verticillata*, Rough Guinea-flower *Hibbertia aspera*, Common Heath *Epacris impressa*, White Kunzea *Kunzea ambigua*, and Hop Goodenia *Goodenia ovata*. Other species often present are Variable Sword-sedge *Lepidosperma laterale*, Common Apple-berry *Billardiera scandens*, Butterfly Flag *Diplarrena moraea*, Austral Bracken *Pteridium esculentum*, Shade Raspwort *Gonocarpus humilis*, Broom Spurge *Amperea xiphoclada* var. *xiphoclada*, Forest Wire Grass *Tetrarrhena juncea*, and Ivy-leaf Violet *Viola hederacea*.

Example: 5 Mile Rd., west of Chinaman's Creek, Wilsons Promontory National Park U23623).



Lowland Forest south-west of the Long Ridge Tk and Banksia Tk intersection. Holey Plains State Park. Photo: John Davies. 1996.



Lowland Forest at Esso-BHP plant, Longford. Photo: John Davies 1996.

Gippsland species list including species frequency and fidelity.

- Fidelity:** Rating of faithfulness of a species to an EVC or Floristic Community. Highest fidelity rating indicated by an “F” ie species only recorded in respective group.
- % Frequency:** Percentage occurrence of a species/taxa in an EVC or Floristic Community – **NB. Species highlighted in red are the most frequent and important.**
- * = weed ie: non native
- Rarity categories from NRE’s Flora Information System (FIS).

EVC 16: LOWLAND FOREST (Type 1)

Lifeform	Scientific Name	Common Name	% Fr	F
Trees	<i>Eucalyptus obliqua</i>	Messmate	83	10
	<i>Eucalyptus radiata</i> s.l.	Narrow-leaf Peppermint	74	5
	<i>Eucalyptus considiniana</i>	Yertchuk	19	2
	<i>Eucalyptus cytellocarpa</i>	Mountain Grey Gum	14	3
	<i>Eucalyptus ovata</i>	Swamp Gum	9	2
Shrubs	<i>Epacris impressa</i>	Common Heath	86	3
	<i>Acacia mucronata</i>	Narrow-leaf Wattle	74	36
	<i>Leptospermum continentale</i>	Prickly Tea-tree	74	3
	<i>Pultenaea gunnii</i>	Golden Bush-pea	69	40
	<i>Cassinia aculeata</i>	Common Cassinia	62	5
	<i>Amperea xiphoclada</i> var. <i>xiphoclada</i>	Broom Spurge	57	4
	<i>Bauera rubioides</i>	Wiry Bauera	43	84
	<i>Goodenia ovata</i>	Hop Goodenia	40	7
	<i>Acacia verticillata</i>	Prickly Moses	31	5
	<i>Olearia lirata</i>	Snow Daisy-bush	26	2
	<i>Dillwynia glaberrima</i>	Smooth Parrot-pea	21	2
	<i>Ozothamnus ferrugineus</i>	Tree Everlasting	21	2
	<i>Cassinia longifolia</i>	Shiny Cassinia	19	4

Lifeform	Scientific Name	Common Name	% Fr	F
	<i>Banksia marginata</i>	Silver Banksia	19	2
	<i>Rhytidosporum procumbens</i>	White Marianth	17	20
	<i>Tetratheca ciliata</i>	Pink-bells	17	12
	<i>Olearia phlogopappa</i>	Dusty Daisy-bush	17	4
	<i>Banksia spinulosa</i> var. <i>cunninghamii</i>	Hairpin Banksia	14	168
	<i>Hakea decurrens</i>	Bushy Needlewood	14	56
	<i>Pultenaea juniperina</i>	Prickly Bush-pea	14	42
	<i>Tetratheca bauerifolia</i>	Heath Pink-bells	12	20
	<i>Monotoca scoparia</i>	Prickly Broom-heath	12	0.8
Herbs	<i>Gonocarpus tetragynus</i>	Common Raspwort	81	3
	<i>Viola hederacea</i>	Ivy-leaf Violet	62	3
	<i>Lagenophora stipitata</i>	Common Bottle-daisy	43	2
	<i>Drosera peltata</i> ssp. <i>auriculata</i>	Tall Sundew	36	4
	<i>Hypericum gramineum</i>	Small St John's Wort	31	2
	<i>Opercularia varia</i>	Variable Stinkweed	26	3
	<i>Goodenia lanata</i>	Trailing Goodenia	24	70
	<i>Xanthosia dissecta</i>	Cut-leaf Xanthosia	19	5
	<i>Burchardia umbellata</i>	Milkmaids	19	2
	<i>Hydrocotyle hirta</i>	Hairy Pennywort	19	1
	<i>Poranthera microphylla</i>	Small Poranthera	19	1
	<i>Gonocarpus humilis</i>	Shade Raspwort	14	5
Ferns	<i>Pteridium esculentum</i>	Austral Bracken	76	2
	<i>Lindsaea linearis</i>	Screw Fern	31	8
Sedges	<i>Gahnia radula</i>	Thatch Saw-sedge	76	3
	<i>Lepidosperma laterale</i>	Variable Sword-sedge	43	5
	<i>Gahnia sieberiana</i>	Red-fruit Saw-sedge	21	9
Climbers/Vines	<i>Billardiera scandens</i> var. <i>scandens</i>	Common Apple-berry	64	9
	<i>Cassytha pubescens</i>	Downy Dodder-laurel	26	19
	<i>Clematis aristata</i>	Mountain Clematis	21	1
	<i>Cassytha glabella</i>	Slender Dodder-laurel	19	7
	<i>Amyema pendulum</i>	Drooping Mistletoe	19	13
Grasses	<i>Tetrarrhena juncea</i>	Forest Wire-grass	86	8
	<i>Poa</i> sp.	Tussock Grass	57	1
	<i>Microlaena stipoides</i> var. <i>stipoides</i>	Weeping Grass	36	1
Other	<i>Lomandra longifolia</i>	Spiny-headed Mat-rush	62	2
	<i>Lomandra filiformis</i>	Wattle Mat-rush	50	2
Grass-trees	<i>Xanthorrhoea minor</i> ssp. <i>lutea</i>	Small Grass-tree	43	4
Lilies	<i>Dianella caerulea</i>	Paroo Lily	31	24
Orchids	<i>Cryptostylis leptochila</i>	Small Tongue-orchid	17	F
	<i>Pterostylis longifolia</i>	Tall Greenhood	14	42
	<i>Chiloglottis valida</i>	Common Bird-orchid	14	9
Weeds	* <i>Hypochoeris radicata</i>	Cat's Ear	69	2
	* <i>Centaurium tenuiflorum</i>	Branched Centaury	17	1

EVC 16: LOWLAND FOREST (heathy form)-Type 2

* = weed

Rarity categories from FIS

Lifeform	Scientific Name	Common Name	% Fr	F
Trees	<i>Eucalyptus considiana</i>	Yertchuk	61	7
	<i>Eucalyptus radiata</i>	Narrow-leaf Peppermint	44	3
	<i>Eucalyptus obliqua</i>	Messmate	24	2
	<i>Eucalyptus viminalis</i> ssp. <i>pyroriana</i>	Coast Manna-gum	15	0.9
Shrubs	<i>Leptospermum continentale</i>	Prickly Tea-tree	83	3
	<i>Epacris impressa</i>	Common Heath	76	3
	<i>Bossiaea cinerea</i>	Showy Bossiaea	44	4
	<i>Xanthosia dissecta</i>	Cut-leaf Xanthosia	42	14
	<i>Olearia lirata</i>	Snow Daisy-bush	42	4
	<i>Cassinia aculeata</i>	Common Cassinia	39	3
	<i>Dillwynia glaberrima</i>	Smooth Parrot-pea	37	3
	<i>Tetradlea pilosa</i>	Hairy Pink-bells	32	6
	<i>Pimelea linifolia</i>	Slender Rice-flower	29	3
	<i>Dampiera stricta</i>	Blue Dampiera	27	3
	<i>Correa reflexa</i>	Common Correa	24	3
	<i>Acrotriche serrulata</i>	Honey-pots	24	3
	<i>Banksia serrata</i>	Saw Banksia	19	1
	<i>Monotoca scoparia</i>	Prickly Broom-heath	17	1
	<i>Kunzea ericoides</i>	Burgan	15	2
	<i>Banksia marginata</i>	Silver Banksia	15	1
Herbs	<i>Gonocarpus tetragynus</i>	Common Raspwort	80	3
	<i>Amperea xiphoclada</i> var. <i>xiphoclada</i>	Broom Spurge	56	4
	<i>Drosera peltata</i> ssp. <i>auriculata</i>	Tall Sundew	37	4
	<i>Lagenophora stipitata</i>	Common Bottle-daisy	32	1
	<i>Burchardia umbellata</i>	Milkmaids	27	3
	<i>Opercularia varia</i>	Variable Stinkweed	22	2
	<i>Viola hederacea</i>	Ivy-leaf Violet	19	0.9
	<i>Poranthera microphylla</i>	Small Poranthera	15	1
Climbers	<i>Billardiera scandens</i> var. <i>scandens</i>	Common Apple-berry	37	4
	<i>Gahnia radula</i>	Thatch Saw-sedge	78	4
Sedges	<i>Lepidosperma laterale</i>	Variable Sword-sedge	17	2
Other	<i>Lomandra longifolia</i>	Spiny-headed Mat-rush	37	1
	<i>Lomandra filiformis</i>	Wattle Mat-rush	24	1
Grass-trees	<i>Xanthorrhoea minor</i> ssp. <i>lutea</i>	Small Grass-tree	37	3
Ferns	<i>Pteridium esculentum</i>	Austral Bracken	93	2
Grasses	<i>Poa</i> sp.	Tussock Grass	71	1
Weeds	* <i>Hypochoeris radicata</i>	Cat's Ear	49	1

EVC 16: LOWLAND FOREST (heathiest form)-Type 2

* = weed

Rarity categories from FIS

Lifeform	Scientific Name	Common Name	% Fr	F	
Trees	<i>Eucalyptus considiana</i>	Yertchuk	53	6	
	<i>Eucalyptus radiata</i>	Narrow-leaf Peppermint	37	2	
	<i>Eucalyptus viminalis</i> ssp. <i>pryoriana</i>	Coast Manna-gum	28	2	
	<i>Eucalyptus angophoroides/bridgesiana</i>	Apple-topped Box/But But	12	2	
Shrubs	<i>Epacris impressa</i>	Common Heath	80	3	
	<i>Pimelea linifolia</i>	Slender Rice-flower	65	10	
	<i>Bossiaea cinerea</i>	Showy Bossiaea	55	5	
	<i>Leucopogon virgatus</i>	Common Beard-heath	48	7	
	<i>Leptospermum continentale</i>	Prickly Tea-tree	47	2	
	<i>Acrotriche serrulata</i>	Honey-pots	38	5	
	<i>Banksia serrata</i>	Saw Banksia	38	3	
	<i>Kunzea ericoides</i>	Burgan	33	5	
	<i>Correa reflexa</i>	Common Correa	33	4	
	<i>Cassinia aculeata</i>	Common Cassinia	30	2	
	<i>Astroloma humifusum</i>	Cranberry Heath	27	5	
	<i>Acacia terminalis</i>	Sunshine Wattle	23	34	
	<i>Tetratheca pilosa</i>	Hairy Pink-bells	23	4	
	<i>Leptospermum myrsinoides</i>	Heath Tea-tree	23	2	
	<i>Hibbertia riparia</i>	Erect Guinea Flower	18	8	
	<i>Monotoca scoparia</i>	Prickly Broom-heath	18	1	
	<i>Banksia marginata</i>	Silver Banksia	17	1	
	<i>Acacia oxycedrus</i>	Spike Wattle	15	2	
	<i>Pimelea linifolia</i>	Slender Rice-flower	15	1	
	<i>Hibbertia acicularis</i>	Prickly Guinea Flower	13	1	
	<i>Bossiaea prostrata</i>	Creeping Bossiaea	12	1	
	Climber	<i>Hardenbergia violacea</i>	Purple Coral-pea	18	21
		<i>Gonocarpus tetragynus</i>	Common Raspwort	72	3
	Herbs	<i>Lagenophora stipitata</i>	Common Bottle-daisy	65	2
		<i>Opercularia varia</i>	Variable Stinkweed	57	8
		<i>Helichrysum scorpioides</i>	Button Everlasting	50	16
<i>Senecio gunnii</i>		Mountain Fireweed	45	19	
<i>Poranthera microphylla</i>		Small Poranthera	45	4	
<i>Drosera peltata</i> ssp. <i>auriculata</i>		Tall Sundew	43	6	
<i>Amperea xiphoclada</i> var. <i>xiphoclada</i>		Broom Spurge	35	2	
<i>Hypericum gramineum</i>		Small St John's Wort	33	2	
<i>Senecio pinnatifolius</i>		Variable Groundsel	30	3	
<i>Hydrocotyle laxiflora</i>		Stinking Pennywort	28	3	
<i>Wahlenbergia gracilis</i>		Sprawling Bluebell	22	2	
<i>Viola hederacea</i>		Ivy-leaf Violet	22	1	
<i>Luzula campestris</i> spp. agg.		Field Woodrush	18	4	
<i>Dichondra repens</i>		Kidney-weed	17	0.5	
<i>Euchiton gymnocephalus</i>		Creeping Cudweed	15	1	
Orchids		<i>Acianthus exsertus/pusillus</i>	Gnat Orchid/ Tiny Gnat Orchid	40	10
		<i>Pteridium esculentum</i>	Austral Bracken	97	2
Sedge		<i>Gahnia radula</i>	Thatch Saw-sedge	50	2
Other		<i>Lomandra filiformis</i>	Wattle Mat-rush	60	3
		<i>Lomandra longifolia</i>	Spiny-headed Mat-rush	48	1
Grass-trees	<i>Xanthorrhoea minor</i> ssp. <i>lutea</i>	Small Grass-tree	25	2	
Grasses	<i>Poa</i> sp.	(tussock grass)	93	2	
	<i>Microlaena stipoides</i> var. <i>stipoides</i>	Weeping Grass	18	0.6	
Weeds	* <i>Hypochoeris radicata</i>	Cat's Ear	90	2	

*	<i>Holcus lanatus</i>	Yorkshire Fog	28	1
*	<i>Centaureum tenuiflorum</i>	Branched Centaury	15	1
*	<i>Oxalis corniculata</i> s.l.	Yellow Wood-sorrel	15	0.9

EVC 16: LOWLAND FOREST-Type 2

* = weed

Rarity categories from FIS

Lifeform	Scientific Name	Common Name	% Fr	F	
Trees	<i>Eucalyptus radiata</i> s.l.	Narrow-leaf Peppermint	87	6	
	<i>Eucalyptus viminalis</i> ssp. <i>pryoriana</i>	Coast Manna Gum	32	2	
	<i>Eucalyptus angophoroides</i> / <i>bridgesiana</i>	Apple-topped Box/But But	19	4	
Small trees/ Shrubs	<i>Eucalyptus melliodora</i>	Yellow Box	6	5	
	<i>Acacia mearnsii</i>	Black Wattle	19	5	
	<i>Cassinia aculeata</i>	Common Cassinia	19	1	
Herbs	<i>Leptospermum continentale</i>	Prickly Tea-tree	19	0.7	
	<i>Epacris impressa</i>	Common Heath	16	0.6	
	<i>Acrotriche serrulata</i>	Honey-pots	13	1	
	<i>Allocasuarina littoralis</i>	Black Sheoke	10	5	
	<i>Hydrocotyle laxiflora</i>	Stinking Pennywort	58	6	
	<i>Oxalis corniculata</i> s.l.	Yellow Wood-sorrel	58	4	
	<i>Dichondra repens</i>	Kidney-weed	48	1	
	<i>Lagenophora stipitata</i>	Common Bottle-daisy	42	1	
	<i>Poranthera microphylla</i>	Small Poranthera	29	2	
	<i>Stellaria flaccida</i>	Forest Starwort	26	3	
	<i>Acaena novae-zelandiae</i>	Bidgee-widgee	26	1	
	<i>Cotula australis</i>	Common Cotula	23	3	
	<i>Senecio pinnatifolius</i>	Variable Groundsel	23	2	
	<i>Senecio gunnii</i>	Mountain Fireweed	19	5	
	<i>Luzula campestris</i> spp.agg.	Field Woodrush	19	4	
	<i>Veronica plebeia</i>	Trailing Speedwell	19	3	
	Other	<i>Geranium solanderi</i>	Austral Cranesbill	16	4
<i>Viola hederacea</i>		Ivy-leaf Violet	16	0.8	
<i>Wahlenbergia gracilis</i>		Sprawling Bluebell	13	1	
<i>Hypericum gramineum</i>		Small St John's Wort	13	0.8	
<i>Lomandra filiformis</i>		Wattle Mat-rush	29	1	
Sedges		<i>Gahnia radula</i>	Thatch Saw-sedge	16	0.7
Ferns		<i>Pteridium esculentum</i>	Austral Bracken	74	2
Grasses		<i>Poa</i> sp.	Tussock Grass	61	1
		<i>Microlaena stipoides</i> var. <i>stipoides</i>	Weeping Grass	19	0.7
Weeds		*	<i>Hypochoeris radicata</i>	Cat's Ear	100
	*	<i>Holcus lanatus</i>	Yorkshire Fog	97	5
	*	<i>Cirsium vulgare</i>	Spear Thistle	68	4
	*	<i>Senecio jacobaea</i>	Ragwort	52	8
	*	<i>Stellaria media</i>	Chickweed	48	22
	*	<i>Cynosurus echinatus</i>	Rough Dog's-tail	42	50
	*	<i>Trifolium</i> sp.	Clover	39	19
	*	<i>Acetosella vulgaris</i>	Sheep Sorrel	39	13
	*	<i>Conyza bonariensis</i>	Tall Fleabane	35	6
	*	<i>Trifolium dubium</i>	Suckling Clover	26	10
	*	<i>Sonchus oleraceus</i>	Sow-thistle	26	2
	*	<i>Solanum nigrum</i> s.l.	Black Nightshade	19	4
	*	<i>Plantago lanceolata</i>	Ribwort	16	3
	*	<i>Anagallis arvensis</i>	Pimpernel	16	1

EVC 16: LOWLAND FOREST

* = weed

Rarity categories from FIS

Lifeform	Scientific Name	Common Name	% Fr	F
Trees	<i>Eucalyptus angophoroides/bridgesiana</i>	Apple-topped Box/But But	63	18
	<i>Eucalyptus radiata</i> s.l.	Narrow-leaf Peppermint	50	3
	<i>Eucalyptus viminalis</i> ssp. <i>pryoriana</i>	Coast Manna Gum	39	2
	<i>Eucalyptus ovata</i>	Swamp Gum	34	10
	<i>Eucalyptus melliodora</i>	Yellow Box	16	19
Shrubs	<i>Pimelea linifolia</i>	Slender Rice-flower	50	6
	<i>Kunzea ericoides</i>	Burgan	39	6
	<i>Astroloma humifusum</i>	Cranberry Heath	21	4
	<i>Cassinia aculeata</i>	Common Cassinia	21	1
	<i>Acrotriche serrulata</i>	Honey-pots	18	2
	<i>Leptospermum continentale</i>	Prickly Tea-tree	18	0.6
	<i>Melaleuca ericifolia</i>	Swamp Paperbark	13	1
Herbs	<i>Dichondra repens</i>	Kidney-weed	76	2
	<i>Euchiton gymnocephalus</i>	Creeping Cudweed	47	5
	<i>Hydrocotyle laxiflora</i>	Stinking Pennywort	37	4
	<i>Senecio gunnii</i>	Mountain Fireweed	29	8
	<i>Veronica plebeia</i>	Trailing Speedwell	29	5
	<i>Gonocarpus tetragynus</i>	Common Raspwort	29	1
	<i>Viola hederacea</i>	Ivy-leaf Violet	24	1
	<i>Oxalis corniculata</i> s.l.	Yellow Wood-sorrel	21	2
	<i>Hypericum gramineum</i>	Small St John's Wort	21	1
	<i>Geranium solanderi</i>	Austral Cranesbill	16	4
	<i>Poranthera microphylla</i>	Small Poranthera	16	1
	<i>Opercularia varia</i>	Variable Stinkweed	10	1
	<i>Acaena novae-zelandiae</i>	Bidgee-widgee	10	0.5
Sedges	<i>Gahnia radula</i>	Thatch Saw-sedge	32	1
Ferns	<i>Pteridium esculentum</i>	Austral Bracken	50	1
Climbers/Vines	<i>Comesperma volubile</i>	Love Creeper	16	1
Grasses	<i>Poa</i> sp.	Tussock Grass	84	2
Orchids	<i>Acianthus exsertus/pusillus</i>	Gnat Orchid/Tiny Gnat Orchid	29	6
Weeds	* <i>Hypochoeris radicata</i>	Cat's Ear	97	2
	* <i>Conyza bonariensis</i>	Tall Fleabane	68	13
	* <i>Centaureum tenuiflorum</i>	Branched Centaury	58	5
	* <i>Holcus lanatus</i>	Yorkshire Fog	47	2
	* <i>Senecio jacobaea</i>	Ragwort	29	4
	* <i>Cirsium vulgare</i>	Spear Thistle	24	1
	* <i>Sonchus oleraceus</i>	Sow-thistle	10	0.8

EVC 16: LOWLAND FOREST

* = weed

Rarity categories from FIS

Lifeform	Scientific Name	Common Name	% Fr	F
Trees	<i>Eucalyptus globoidea</i>	White Stringybark	87	46
Shrubs	<i>Leptospermum continentale</i>	Prickly Tea-tree	100	4
	<i>Banksia marginata</i>	Silver Banksia	75	6
	<i>Brachyloma daphnoides</i>	Daphne Heath	37	16
Herbs	<i>Gonocarpus tetragynus</i>	Common Raspwort	50	2
Ferns	<i>Pteridium esculentum</i>	Austral Bracken	37	0.8
Sedges	<i>Gahnia radula</i>	Thatch Saw-sedge	87	4
Grasses	<i>Poa</i> sp.	Tussock Grass	87	2