

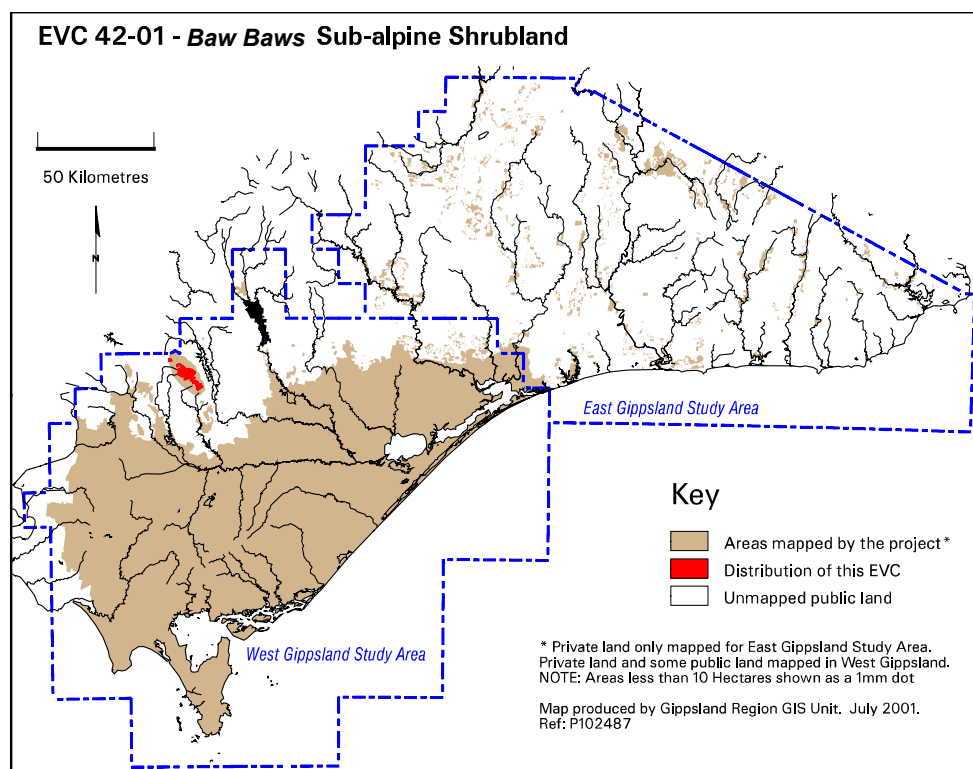
EVC 42 Sub-alpine Shrubland

An open to dense dry, grassy shrubland that occurs in sub-alpine mountain environments above 1300m. The dominant feature is the dense to patchy shrub layer that grows with grasses and herbs where soils are shallower.

Floristic Community 42-01 *Baw Baws* Sub-alpine Shrubland

Description below is from Davies (unpublished).

Elevation (metres above sea level)	>1300
Average rainfall p.a. (mm)	1900-2000 with snow often persisting for long periods over winter
Topography	North-facing slopes and knolls, often in the vicinity of granite tors, as well as on well-drained grassy lower slopes of cold-air drainage flats
Geology	Granodiorite
Soils	Well-drained, stony, yellow-brown loam/clay loam
Related/adjacent EVCs/FCs	Sub-alpine Woodland, Sub-alpine Wet Heathland (downslope) and <i>Dry</i> Sub-alpine Shrubland
Present land use	Nature conservation, recreation, water catchment
Present distribution	Baw Baw plateau
Examples of sites/quadrats/lists	C56064, C56057
Total Area (ha)/ Number of polygons	173/139
Group analysis no.	Not available



Vegetation: structure/floristics:

A sub-alpine grassy shrubland that occurs on the drier, warmer granite knolls and north-facing associated slopes of the Baw Baw plateau. It ranges from the north-western end of the Baw Baw plateau near Rocky Knoll to the south-eastern end near Mt. Erica.

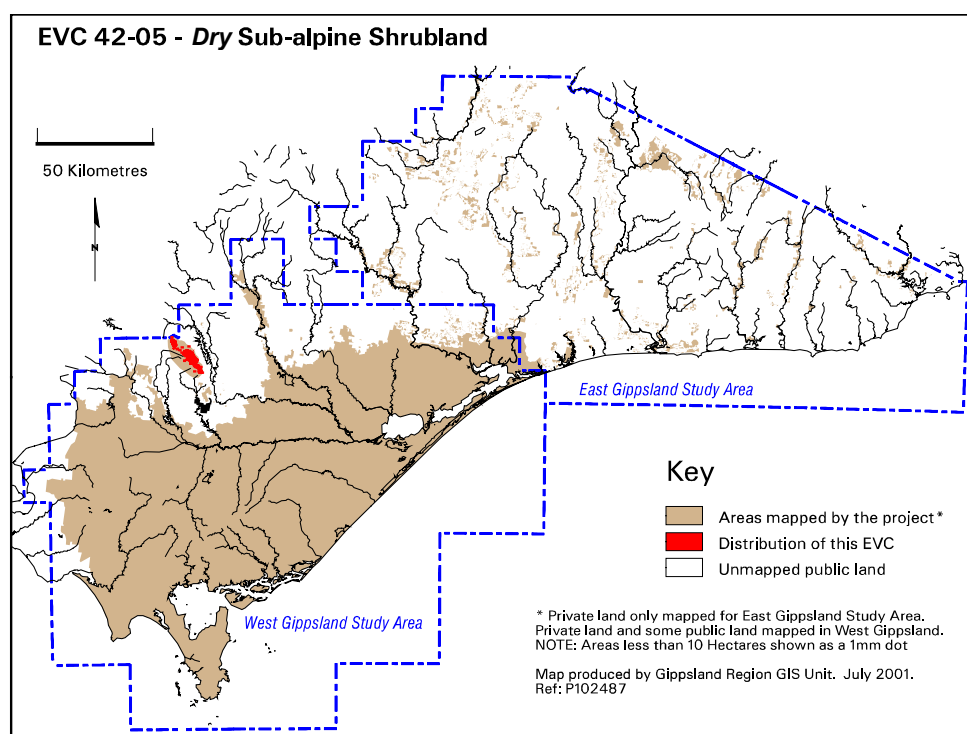
Characteristic shrubs include Dusty Daisy-bush *Olearia phlogopappa*, Alpine Orites *Orites lancifolia*, Cascade Everlasting *Ozothamnus secundiflorus*, Alpine Rice-flower *Pimelea alpina* and Muellers Bush-pea *Pultenaea muelleri*. The grassy/herbaceous ground layer, which may be quite dense if the

shrubs are sparse, is characterised by Mountain Woodruff *Asperula gunnii*, Mountain Pennywort *Hydrocotyle algida*, Strawberry Buttercup *Ranunculus collinus*, Mountain Fireweed *Senecio gunnii*, Grass Trigger-plant *Stylidium graminifolium*, Mountain Daisy-bush *Olearia algida*, Short-stem Sedge *Carex breviculmis*, Silver Daisy *Celmisia asteliifolia*, Alpine Wallaby-grass *Rytidosperma nudiflorum*, Horny Snow-grass *Poa fawcettiae*, Twin-flower Knawel *Scleranthus biflorus*, Ivy-leaf Violet *Viola hederacea* s.l. and Australian Carraway *Oreomyrrhis eriopoda*.

Floristic Community 42- 05 *Dry Sub-alpine Shrubland*

Description below is from Davies (unpublished).

Elevation (metres above sea level)	>1300
Average rainfall p a. (mm)	1900-2000 with snow persisting for long periods over winter
Topography	Lower slopes above cold-air drainage flats
Geology	Devonian granodiorite
Soils	Well-drained, stony, yellow-brown loam or clay loam
Related/adjacent EVCs/FCs	<i>Baw Baws</i> Sub-alpine Shrubland, Sub-alpine Woodland, Sub-alpine Wet Heathland
Present land use	Nature conservation, recreation, water catchment
Present distribution	The Morass, Mustering Flat and other treeless basins across the Baw Baw plateau
Examples of sites/quadrats/lists	C56026
Total Area (ha)/ Number of polygons	279/146
Group analysis no.	Not available



Vegetation: structure/floristics:

Characterised by a lack of eucalypts and an herbaceous/grassy/shrubby groundcover. Shrubs present include Alpine Star-bush *Asterolasia trymalioides*, Mountain Grevillea *Grevillea alpina*, Scaly Everlasting *Ozothamnus hookeri*, Mountain Daisy-bush *Olearia algida*, Alpine Rice-flower *Pimelea alpina* and Mueller's Bush-pea *Pultenaea muelleri*. The groundcover consists of Alpine Podolepis *Podolepis robusta*, Australian Carraway *Oreomyrrhis eriopoda*, Leek Orchid *Prasophyllum* spp., Mountain Woodruff *Asperula gunnii*, Short-stem Sedge *Carex breviculmis*, Silver Daisy *Celmisia*

asteliifolia spp.agg., Common Mouse-ear Chickweed *Cerastium fontanum* ssp. *vulgare*, Billy-buttons *Craspedia* spp., Southern Woodrush *Luzula modesta*, Orange Everlasting *Bracteantha subundulata*, Mat Raspwort *Gonocarpus montanus*, Mountain Pennywort *Hydrocotyle algida*, Veined Plantain *Plantago alpestris*, Small Poranthera *Poranthera microphylla*, Mountain Fireweed *Senecio gunnii*, Grass Trigger-plant *Stylidium graminifolium*, Ivy-leaf Violet *Viola hederacea*, Soft Snow-grass *Poa hiemata* and Alpine Wallaby-grass *Rytidosperma nudiflorum*.

Comments:

Dry Sub-alpine Shrubland is related to *Baw Baws* Sub-alpine Shrubland which occurs on grassy upper slopes and knolls rather than on lower slopes of cold-air drainage basins, and does not contain species like Alpine Star-bush *Asterolasia trymalioides*.