

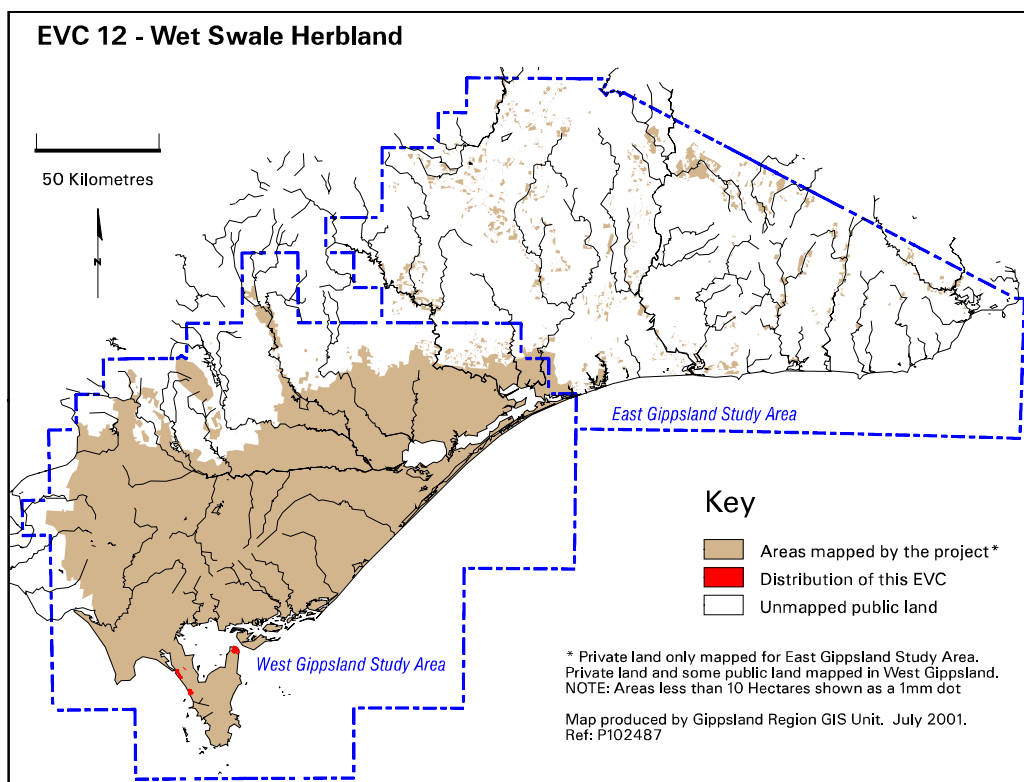
## Gippsland Vegetation Types: Ecological Vegetation Classes (EVC's)

EVC description derived from Davies et.al (2001) Ecological Vegetation Class Mapping at 1:25 000 in Gippsland.

### **EVC 12 Wet Swale Herbland**

Occupies the swales that have formed between the coastal dune barrier and the hinterland hills. Vegetation varies according to drainage and frequency of inundation but often consists of a rushland with a suite of introduced herbaceous species in the more disturbed areas.

<b>Elevation (metres above sea level)</b>	<20
<b>Average rainfall p.a. (mm)</b>	900
<b>Topography</b>	Seasonally inundated swales behind coastal dunes
<b>Geology</b>	Quaternary deposits
<b>Soils</b>	Peaty sand, deep organic soil
<b>Related/adjacent EVCs/FCs</b>	<i>Calcareous</i> Swamp Scrub
<b>Present land use</b>	Nature conservation, recreation
<b>Present distribution</b>	East of Mt Singapore and north-western area of Wilsons National Park, East Gippsland
<b>Examples of sites/quadrats/lists</b>	Cotters Lake (U23863), Ewings Marsh
<b>Total Area(ha)/ Number of polygons</b>	195/43



#### **Vegetation: structure/floristics:**

This EVC typically consists of a rushland dominated by *Juncus* spp. but also includes a suite of introduced herbaceous species perhaps reflecting the past history of cattle grazing in these areas.

Other species present are *Oxalis* spp, Angled Lobelia *Lobelia anceps*, Kidney-weed *Dichondra repens*, Ribwort *Plantago lanceolata*, Clover *Trifolium* spp, Knobby Club-sedge *Isolepis nodosa*, Hairy Hawkbit *Leontodon taraxacoides*, Yorkshire Fog *Holcus lanatus*, Bidgee-widgee *Acaena novae-zelandiae* and Self-heal *Prunella vulgaris*.

**Comments:**

The above description is based only on the one site listed above.

**Species list including species frequency and fidelity.**

**Fidelity:** Rating of faithfulness of a species to an EVC or Floristic Community. Highest fidelity rating indicated by an “F” ie species only recorded in respective group.

**% Frequency:** Percentage occurrence of a species/taxa in an EVC or Floristic Community – **NB. Species highlighted in red are the most frequent and important.**

\* = weed ie: non native.

Rarity categories from NRE’s Flora Information System (FIS).

**PROM. EVC 12: WET SWALE HERBLAND**

Species	% Frequency	Fidelity
*Agrostis capillaris	10.00	F
*Aster subulatus	10.00	F
Cardamine gunnii s.l.	10.00	F
Carex fascicularis	20.00	F
Carex inversa	10.00	F
Crassula helmsii	10.00	F
*Echium plantagineum	10.00	F
Gahnia filum	10.00	F
Hydrocotyle tripartita	10.00	F
*Juncus acutus ssp. acutus	10.00	F
Juncus subsecundus	10.00	F
Ottelia ovalifolia ssp. ovalifolia	10.00	F
*Parentucellia viscosa	10.00	F
*Plantago australis	20.00	F
*Plantago major	10.00	F
Polygonum spp.	10.00	F
*Prunella vulgaris	10.00	F
Ranunculus amphitrichus	10.00	F
Schoenoplectus validus	30.00	F
*Trifolium repens var. repens	30.00	F
Typha orientalis	10.00	F
Mentha diemenica	60.00	367.35
Juncus articulatus x holoschoenus	50.00	306.00
Persicaria decipiens	50.00	305.60
Cuscuta tasmanica	40.00	244.80
Berula erecta	90.00	183.61
Hydrocotyle verticillata	30.00	183.60
Isolepis platycarpa	50.00	153.00
Agrostis rudis	40.00	122.39
Juncus caespiticius	40.00	81.57
*Cirsium vulgare	50.00	76.46
Potamogeton tricarlinatus s.l.	10.00	61.22
Spiranthes sinensis	10.00	61.22
Centella cordifolia	40.00	61.20
Agrostis aemula	10.00	61.20
Eleocharis acuta	20.00	61.20
Senecio glomeratus	10.00	61.19
Typha domingensis	50.00	51.00
*Leontodon taraxacoides	60.00	40.79
Triglochin striatum	70.00	38.95
Haloragis brownii	30.00	36.72
Hydrocotyle muscosa	10.00	30.60
Senecio spathulatus	10.00	30.60

Species	% Frequency	Fidelity
<i>Hydrocotyle sibthorpioides</i>	70.00	30.60
<i>Cladium procerum</i>	30.00	30.60
<i>Agrostis avenacea</i>	50.00	30.60
<i>Leptinella reptans</i> s.l.	10.00	30.60
<i>Apium prostratum</i> ssp. <i>prostratum</i>	30.00	30.59
* <i>Centaurium tenuiflorum</i>	30.00	26.23
* <i>Holcus lanatus</i>	40.00	24.48
* <i>Cerastium glomeratum</i> s.l.	10.00	20.40
<i>Brachyscome graminea</i>	10.00	20.40
* <i>Melilotus indicus</i>	10.00	20.40
* <i>Conyza bonariensis</i>	10.00	20.40
<i>Selliera radicans</i>	50.00	16.11
<i>Urtica incisa</i>	40.00	15.30
<i>Chenopodium glaucum</i>	10.00	15.30
<i>Pseudognaphalium luteoalbum</i>	10.00	15.30
<i>Juncus kraussii</i> ssp. <i>australiensis</i>	20.00	12.24
<i>Senecio linearifolius</i>	10.00	12.24
<i>Triglochin procerum</i> s.l.	30.00	12.24
<i>Agrostis billardierei</i> var. <i>billardierei</i>	10.00	12.24
<i>Senecio minimus</i>	20.00	11.13
<i>Euphrasia collina</i>	10.00	10.20
<i>Samolus repens</i>	20.00	10.20
* <i>Senecio jacobaea</i>	20.00	10.20
<i>Gratiola peruviana</i>	10.00	10.20
<i>Schoenus maschalinus</i>	20.00	9.42
<i>Villarsia reniformis</i>	20.00	8.16
<i>Lobelia anceps</i>	50.00	7.65
<i>Phragmites australis</i>	10.00	6.80
<i>Epilobium billardierianum</i>	50.00	5.56
<i>Muehlenbeckia adpressa</i>	10.00	5.56
<i>Schoenus nitens</i>	50.00	5.46
* <i>Sonchus oleraceus</i>	20.00	5.32
<i>Carex appressa</i>	20.00	4.71
<i>Myoporum insulare</i>	10.00	4.71
<i>Baumea juncea</i>	30.00	4.48
<i>Leucopogon australis</i>	10.00	4.08
<i>Galium australe</i>	10.00	4.08
<i>Melaleuca ericifolia</i>	20.00	3.31
* <i>Anagallis arvensis</i>	30.00	3.06
<i>Drosera binata</i>	10.00	2.55
<i>Utricularia dichotoma</i> s.l.	10.00	2.45
<i>Deyeuxia quadriseta</i>	10.00	2.35
<i>Isolepis nodosa</i>	40.00	2.25
<i>Acaena novae-zelandiae</i>	20.00	2.01
<i>Baumea rubiginosa</i> s.l.	10.00	1.80
<i>Leptospermum lanigerum</i>	10.00	1.70
<i>Poa labillardierei</i>	10.00	1.70
<i>Acacia longifolia</i> var. <i>sophorae</i>	20.00	1.35
<i>Apodasmia brownii</i>	10.00	1.20
<i>Leptospermum myrsinoides</i>	20.00	0.95
* <i>Centaurium erythraea</i>	20.00	0.94
<i>Lepidosperma filiforme</i>	10.00	0.85
<i>Viola hederacea</i> s.l.	10.00	0.58
<i>Geranium potentilloides</i>	10.00	0.57
* <i>Hypochoeris radicata</i>	10.00	0.47
<i>Lagenophora stipitata</i>	10.00	0.47
<i>Leptospermum laevigatum</i>	10.00	0.35