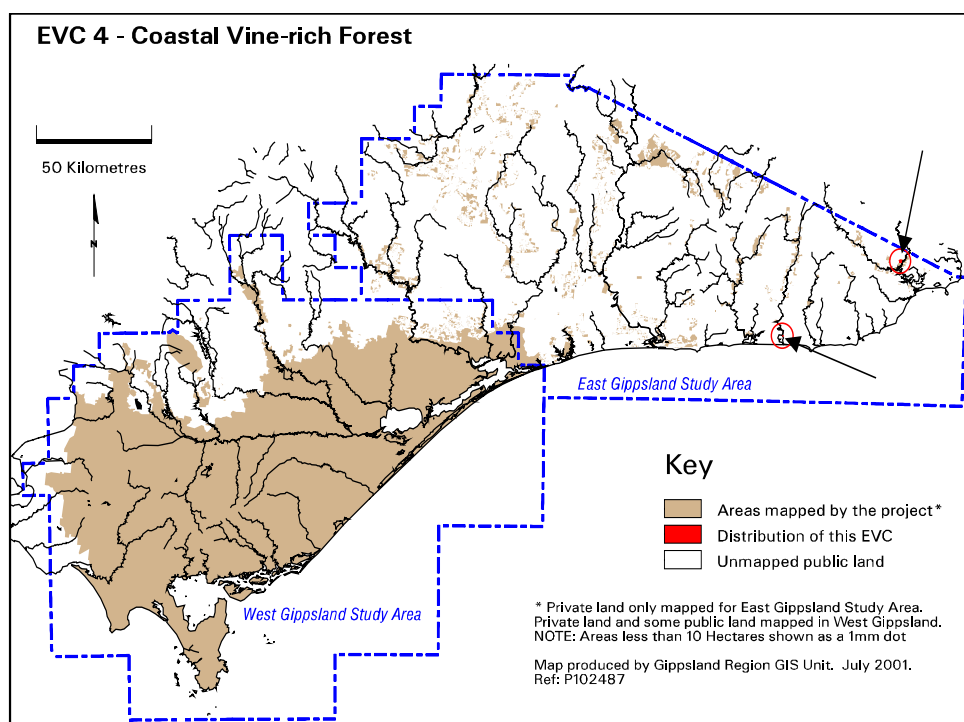


EVC 4 Coastal Vine-rich Forest

The description below is from Woodgate *et al.* (1994).

Occurs only in East Gippsland and develops at the foot of slopes, often in shallow gullies associated with inlets on the seaward side of coastal hills. The overstorey is usually dominated by Southern Mahogany *Eucalyptus botryoides* with Rough-barked Apple *Angophora floribunda*. The understorey has a scattered tall shrub layer and is covered with a diverse array of rainforest lianes. The ground layer is dominated by Austral Bracken *Pteridium esculentum*, tussock grasses and a wide array of herbs.

Elevation (metres above sea level)	0-40
Average rainfall p.a. (mm)	<1000
Topography	Foot of slopes associated with the seaward side of coastal hills. Often a southerly aspect
Geology	Various
Soils	Sandy aeolian or colluvial soils with high moisture levels
Related/adjacent EVCs/FCs	Warm Temperate Rainforest
Present land use	Nature conservation, recreation
Present distribution	Coastal areas of East Gippsland
Examples of sites/quadrats/lists	Northern shores of Lake Barracouta, areas adjacent and just north of Howe Flat, Peach Tree Camp on Peach Tree Creek Tamboon Inlet, gully to the east of Point Hicks Rd crossing of the Thurra River mouth, several gullies in and around Mallacoota township, western side of Easby Creek (O37104)
Total Area (ha)/ Number of polygons	12/3
Group analysis no.	Not available for East Gippsland Study Area



Vegetation: structure/floristics:

Overstorey dominated by Southern Mahogany *Eucalyptus botryoides* with Rough-barked Apple *Angophora floribunda* whilst Red Bloodwood *Corymbia gummifera* may be more prevalent east of Wingan Inlet. Understorey has a scattered tall shrub layer of Black Wattle *Acacia mearnsii* and Blue Olive berry *Elaeocarpus reticulatus*. Shrubs covered with a diverse array of rainforest lianes such as Forest Clematis *Clematis glycinoides*, Mountain Clematis *C. aristata*, Jungle Grape *Cissus hypoglauca*, Wombat Berry *Eustrephus latifolius* and Bearded Tylophora *Tylophora barbata*. Ground layer

dominated by Austral Bracken *Pteridium esculentum*, tussock grasses and a wide array of herbs. Possibly an early seral stage of Warm Temperate Rainforest that does not fully develop because of a lack of topographic protection from fire.

Comments:

An example of an EVC at the end of its biogeographical range in Victoria, being more common and better developed in southern coastal New South Wales.