

Gippsland Vegetation Types: Ecological Vegetation Classes (EVC's)

EVC description derived from Davies et.al (2001) Ecological Vegetation Class Mapping at 1: 25000 in Gippsland.

EVC 8 Wet Heathland

Occurs on lower slopes, flats or depressions on infertile sands that are subject to prolonged water logging. A low, generally treeless heathland although sometimes scattered eucalypts can be present. Understorey includes epacrid and myrtaceous shrubs, sedges, Restionaceous species and Grass-trees. Button Grass *Gymnoschoenus sphaerocephalus* can be a good indicator species for the EVC although it can be locally infrequent.

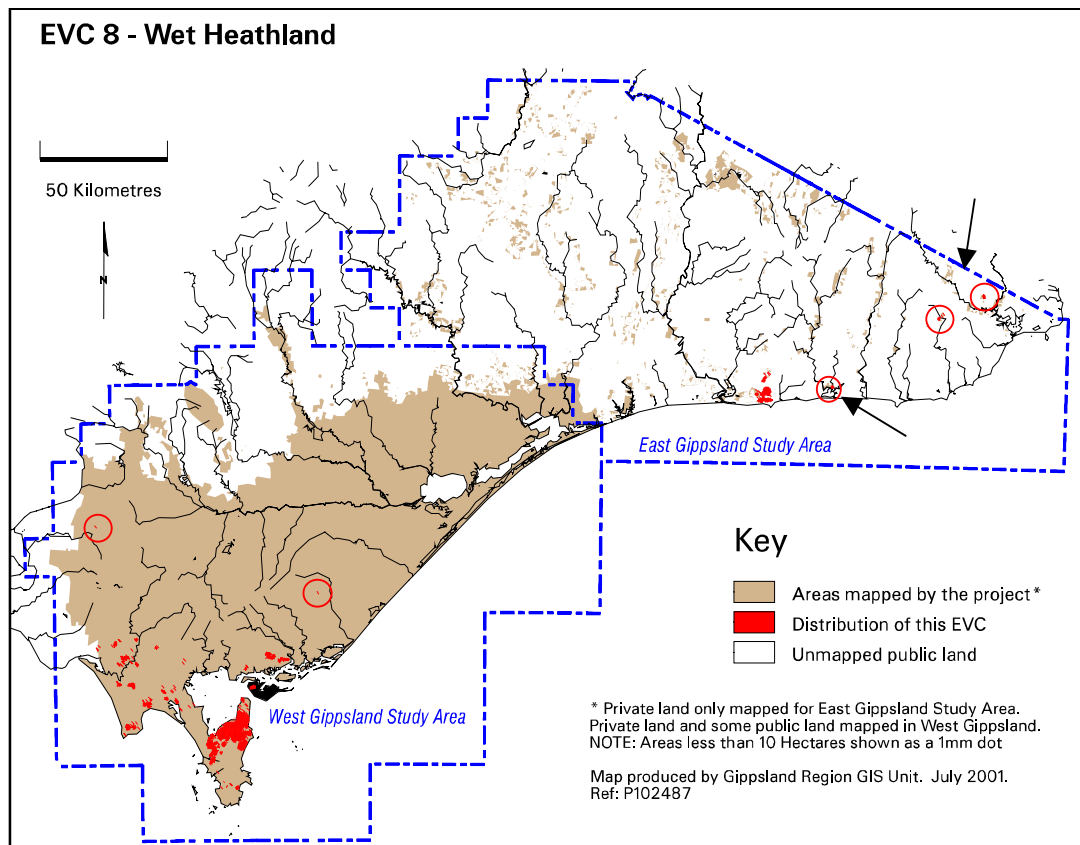


Wet Heathland along the Wilsons Promontory Road before Yanakie. Photo: John Davies 1997.



Wet Heathland along Five Mile Road, Wilsons Promontory National Park. Photo: Alison Oates 1999.

Elevation (metres above sea level)	<40
Average rainfall p.a. (mm)	<1000
Topography	Plains/undulating plains and occasional lower slopes
Geology	Quaternary deposits of clay, sand and peat
Soils	Soils variable, from shallow uniform black sand to sandy peat on dark reddish-brown (ironstone) cemented hardpan, through to duplex profiles with a sandy grey-brown topsoil over a sandy clay subsoil
Related/adjacent EVCs/FCs	Estuarine Wetland (coastal), Swamp Scrub (inland), Wet Heathland/Sand Heathland Mosaic, Clay Heathland
Present land use	Nature conservation, recreation, agriculture
Present distribution	East of Marlo in East Gippsland, Wilsons Promontory National Park, near Tarwin, Walkerville and Port Welshpool (South Gippsland)
Examples of sites/quadrats/lists	Marlo Plains Road, Gellions Run (U23216), (U23217), Tarwin Lower Rd., Tarwin (U23449), Tidal River area, Wilsons Promontory National Park (F48833)
Total Area(ha)/ Number of polygons	8,156/253



Vegetation: structure/floristics:

Typically low in stature with trees of Coast Manna Gum *Eucalyptus viminalis* subsp. *pryoriana* and Bog Gum *Eucalyptus kitsoniana* (South Gippsland) being scattered through this heath although they are more common on the periphery. The dominant Tea-tree is Prickly Tea-tree *Leptospermum continentale*. Dominant shrubs are Scrub She-oak *Allocasuarina paludosa*, Slender/Green She-oak *A. misera/paradoxa*, Scented Paperbark *Melaleuca squarrosa*, Dagger Hakea *Hakea teretifolia* subsp. *hirsuta*, Rigid Bush-pea *Pultenaea stricta* and Smooth Parrot-pea *Dillwynia glaberrima*. Several epacrids are present including Common Heath *Epacris impressa*, Blunt-leaf Heath *E. obtusifolia*, Coral Heath *Epacris microphylla* and Pink Swamp-heath *Sprengelia incarnata*.

Ground cover includes Long Purple-flag *Patersonia occidentalis*, Creeping Raspwort *Gonocarpus micranthus* and Screw Fern *Lindsaea linearis*. Swamp Selaginella *Selaginella uliginosa*, Spreading Rope-rush *Empodisma minus*,

Tall Yellow-eye *Xyris operculata* and Button Grass *Gymnoschoenus sphaerocephalus* are all good indicator species for this poor drainage group. Other species commonly present are Slender Bog-sedge *Schoenus lepidosperma*, Common Rapier-Sedge *Lepidosperma filiforme*, Slender Twine-rush *Leptocarpus tenax*, Spear Grass-tree *X. resinifera* and Small Grass-tree *X. minor* subsp. *lutea*.

In East Gippsland, Wet Heathland is essentially a treeless environment dominated by Spear Grass-tree *Xanthorrhoea resinifera*. Scattered and isolated trees of Southern Mahogany *Eucalyptus botryoides* are sometimes found in Wet Heathland. Several shrub species are present in Wet Heathland and include Scented Paperbark *Melaleuca squarrosa*, Scrub She-oak *Allocasuarina paludosa*, Prickly Tea-tree *Leptospermum continentale* and Blunt-leaf Heath *Epacris obtusifolia*. Swamp Paperbark *Melaleuca ericifolia* may occur in drainage lines and low-lying areas where it sometimes forms a near-impenetrable barrier in the Wet Heathland proper. Also present are Dagger Hakea *Hakea teretifolia* subsp. *hirsuta*, Smooth Parrot-pea *Dillwynia glaberrima*, Common Beard-heath *Leucopogon virgatus* and Pink Swamp-heath *Sprengelia incarnata*. Ground-layer species listed above also occur in East Gippsland with the exception of Austral Grass-tree *Xanthorrhoea australis*. In East Gippsland, Small Grass-tree *Xanthorrhoea minor* subsp. *lutea* is more commonly found in the adjacent Banksia Woodland or Lowland Forest. Zig-zag Bog-sedge *Schoenus brevifolius*, Spreading Rope-rush *Empodisma minus*, Common Rapier-sedge *Lepidosperma filiforme* are also common components of Wet Heathland. Occasional stands of Button Grass *Gymnoschoenus sphaerocephalus* and isolated occurrences of Tall Yellow-eye *Xyris operculata* occur in Wet Heathlands in East Gippsland where drainage is poor, but are generally absent from most heaths. The ground-layer commonly includes Forked Sundew *Drosera binata*, Swamp Selaginella *Selaginella uliginosa*, Creeping Raspwort *Gonocarpus micranthus* and Screw Fern *Lindsaea linearis*.

Gippsland species list including species frequency and fidelity.

- Fidelity:** Rating of faithfulness of a species to an EVC or Floristic Community. Highest fidelity rating indicated by an “F” ie species only recorded in respective group.
- % Frequency:** Percentage occurrence of a species/taxa in an EVC or Floristic Community – NB. Species highlighted in red are the most frequent and important.
- * = weed ie: non native.
- Rarity categories from NRE’s Flora Information System (FIS).

EVC 8: WET HEATHLAND

Lifeform	Scientific Name	Common Name	% Fr	F
Trees	<i>Eucalyptus viminalis</i> ssp. <i>pyroriana</i>	Manna Gum	53	3
Shrubs	<i>Leptospermum continentale</i>	Prickly Tea-tree	97	4
	<i>Allocasuarina paludosa</i>	Scrub Sheoke	58	38
	<i>Epacris impressa</i>	Common Heath	58	2
	<i>Melaleuca squarrosa</i>	Scented Paperbark	50	11
	<i>Epacris microphylla</i>	Coral Heath	42	F
	<i>Dillwynia glaberrima</i>	Smooth Parrot-pea	42	4
	<i>Melaleuca ericifolia</i>	Swamp Paperbark	33	3
	<i>Allocasuarina misera/paradoxa</i>	Slender/Green Sheoak	28	328
	<i>Hakea teretifolia</i> ssp. <i>hirsuta</i>	Dagger Hakea	28	82
	<i>Banksia marginata</i>	Silver Banksia	28	2
	<i>Sprengelia incarnata</i>	Pink Swamp-heath	25	98
	<i>Hibbertia procumbens</i>	Spreading Guinea-flower	22	12
	<i>Acacia verticillata</i>	Prickly Moses	22	3
	<i>Acacia oxycedrus</i>	Spike Wattle	22	3
	<i>Leptospermum myrsinoides</i>	Heath Tea-tree	22	2
<i>Sphaerolobium vimineum</i>	Leafless Globe-pea	19	229	
<i>Bossiaea prostrata</i>	Creeping Bossiaea	19	2	
Herbs	<i>Selaginella uliginosa</i>	Swamp Selaginella	75	40
	<i>Gonocarpus tetragynus</i>	Common Raspwort	47	2
	<i>Patersonia occidentalis</i>	Long Purple-flag	44	131
	<i>Gonocarpus micranthus</i>	Creeping Raspwort	42	33

Lifeform	Scientific Name	Common Name	% Fr	F
	<i>Goodenia humilis</i>	Swamp Goodenia	33	17
	<i>Lobelia anceps</i>	Angled Lobelia	33	8
	<i>Centella cordifolia</i>	Centella	33	8
	<i>Dampiera stricta</i>	Blue Dampiera	31	4
	<i>Villarsia reniformis</i>	Running Marsh-flower	25	10
	<i>Patersonia fragilis</i>	Short Purple-flag	22	66
	<i>Viola sieberiana</i>	Tiny Violet	22	44
	<i>Opercularia varia</i>	Variable Stinkweed	17	2
Grass-trees	<i>Xanthorrhoea resinifera</i>	Spear Grass-tree	39	16
	<i>Xanthorrhoea minor</i> ssp. <i>lutea</i>	Small Grass-tree	36	3
Lilies	<i>Burchardia umbellata</i>	Milkmaids	28	3
Climbers/Vines	<i>Cassytha glabella</i>	Slender Dodder-laurel	17	5
Ferns	<i>Lindsaea linearis</i>	Screw Fern	53	15
Cord-rushes	<i>Leptocarpus tenax</i>	Slender Twine-rush	67	28
	<i>Empodisma minus</i>	Spreading Rope-rush	47	46
Sedges	<i>Schoenus brevifolius</i>	Zig-zag Bog-sedge	56	21
	<i>Lepidosperma filiforme</i>	Common Rapier-sedge	44	52
	<i>Baumea acuta</i>	Pale Twig-sedge	39	38
	<i>Lepidosperma longitudinale</i>	Pithy Sword-sedge	39	15
	<i>Schoenus lepidosperma</i>	Slender Bog-sedge	31	33
	<i>Schoenus tesquorum</i>	Soft Bog-sedge	17	49
	<i>Gahnia trifida</i>	Coast Saw-sedge	17	15
Grasses	<i>Entolasia marginata</i>	Bordered Panic	36	53
	<i>Microlaena stipoides</i> var. <i>stipoides</i>	Weeping Grass	28	1
	<i>Deyeuxia densa</i>	Heath Bent-grass	25	F
	<i>Eragrostis brownii</i>	Common Love-grass	19	7
	<i>Austrostipa rudis</i>	Spear-grass	19	4
	<i>Notodanthonia semiannularis</i>	Wetland Wallaby-grass	17	10
	<i>Hemarthria uncinata</i> var. <i>uncinata</i>	Mat Grass	17	7
	<i>Poa</i> sp.	Tussock Grass	17	0.3
Weeds	* <i>Hypochoeris radicata</i>	Cat's Ear	36	0.8
	* <i>Centaurium tenuiflorum</i>	Branched Centaury	19	2