

Gippsland Vegetation Types: Ecological Vegetation Classes (EVC's)

EVC description derived from Davies et.al (2001) Ecological Vegetation Class Mapping at 1:25 000 in Gippsland.

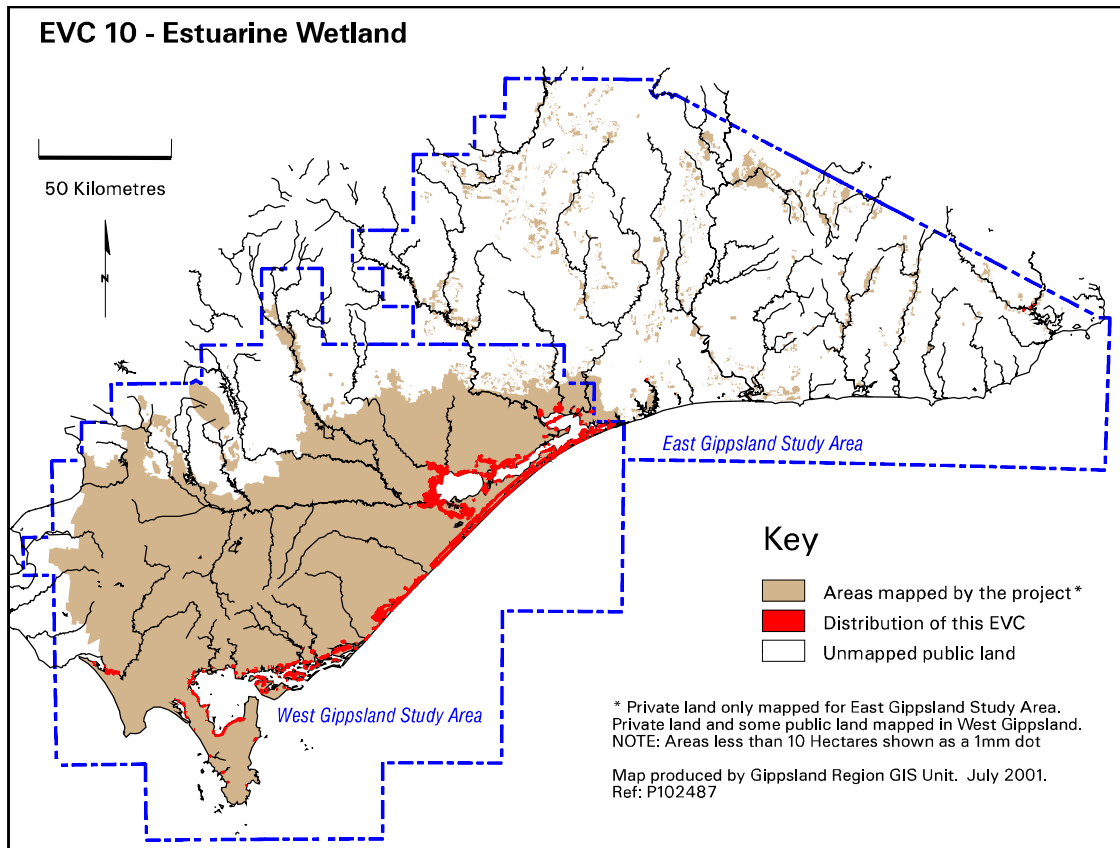
EVC 10 Estuarine Wetland

Grows on the edges of estuarine waterbodies such as creeks, rivers and lagoons with intermediate salinity and poor drainage conditions. Vegetation is determined by fluctuating salinity and drainage, which varies in time from occasionally fresh to brackish or occasionally saline, according to river flow and marine tidal events. Dominated by a scrub layer of Swamp Paperbark *Melaleuca ericifolia* with a halophytic ground cover typically dominated by graminoids and herbs.



Estuarine Wetland with a dense Swamp Paperbark *Melaleuca ericifolia* 1km west of Kelly Head.
Photo: John Davies 1996.

Elevation (metres above sea level)	Sea level
Average rainfall p.a. (mm)	600-900
Topography	Edges of estuarine waterbodies such as creeks, rivers and lagoons
Geology	Quaternary deposits
Soils	Variable from anaerobic sand to silt to clay often with peat surface horizons
Related/adjacent EVCs/FCs	Coastal Saltmarsh, Swamp Scrub (inland impeded drainage), Riparian Scrub
Present land use	Nature conservation, recreation, agriculture
Present distribution	Widespread along the estuarine coastline of the Gippsland Lakes and South Gippsland
Examples of sites/quadrats/lists	Bunga Arm, The Lakes National Park, Corner Inlet, South Gippsland, Millers Landing, Wilsons Promontory National Park (F22690)
Total Area(ha)/ Number of polygons	14,980/587



Vegetation: structure/floristics:

Swamp Paperbark *Melaleuca ericifolia* and Common Boobialla *Myoporum insulare* dominate the scrub overstorey that develops on the edges of estuarine waterbodies. The groundcover often includes salt-adapted, succulent species such as Karkalla *Carpobrotus rossii*, Shiny Swamp-mat *Selliera radicans*, Seaberry Saltbush *Rhagodia candolleana* subsp. *candolleana*, Creeping Brookweed *Samolus repens*, Water Buttons *Cotula coronopifolia*, Coast Saltbush *Atriplex cinerea*, Sea Celery *Apium prostratum*, Goosefoot *Chenopodium* spp. and Beaded Glasswort *Sarcocornia quinqueflora*. The grasses, Australian Salt-grass *Distichlis distichophylla*, Blue Tussock-grass *Poa poiformis* and Common Tussock-grass *Poa labillardierei*, may also be found. As conditions become progressively more waterlogged and saline, Coastal Saltmarsh develops.

Comments:

Estuarine Wetland is found in areas of poor drainage with intermediate salinity conditions, inland from saltmarsh and contains a low frequency of Austral Bracken *Pteridium esculentum*. It occupies the estuarine equivalent to Swamp Scrub and would be better termed "Estuarine Scrub".



Estuarine Wetland with Coastal Saltmarsh in the foreground. Tidal River Wilsons Promontory.
Photo: John Davies 1999.

Gippsland species list including species frequency and fidelity.

- Fidelity:** Rating of faithfulness of a species to an EVC or Floristic Community. Highest fidelity rating indicated by an “F” ie species only recorded in respective group.
- % Frequency:** Percentage occurrence of a species/taxa in an EVC or Floristic Community – **NB. Species highlighted in red are the most frequent and important.**
* = weed ie: non native.
Rarity categories from NRE’s Flora Information System (FIS).

EVC 10: ESTUARINE WETLAND

Lifeform	Scientific Name	Common Name	% Fr	F
Shrubs	<i>Melaleuca ericifolia</i>	Swamp Paperbark	100	9
	<i>Acacia longifolia</i> var. <i>longifolia</i>	Sallow Wattle	50	19
	<i>Acacia verticillata</i>	Prickly Moses	50	7
	<i>Exocarpus strictus</i>	Pale-fruit Ballart	30	13
	<i>Exocarpus syrticola</i>	Coast Ballart	20	120
Herbs	<i>Monotoca elliptica</i>	Tree Broom-heath	20	7
	<i>Senecio spathulatus</i>	Coast Groundsel	60	38
	<i>Lobelia anceps</i>	Angled Lobelia	20	4
Climbers/ Vines	<i>Centella cordifolia</i>	<i>Centella</i>	20	4
	<i>Comesperma volubile</i>	Love Creeper	20	1
Halophytes	<i>Disphyma crassifolium</i> ssp. <i>clavellatum</i>	Rounded Noon-flower	60	22
	<i>Rhagodia candolleana</i> ssp. <i>candolleana</i>	Seaberry Saltbush	60	11
	<i>Selliera radicans</i>	Shiny Swamp-mat	50	10
	<i>Myoporum insulare</i>	Common Boobialla	20	6
	<i>Samolus repens</i>	Creeping Brookweed	20	4

Lifeform	Scientific Name	Common Name	% Fr	F
Rushes	<i>Juncus kraussii</i> ssp. <i>australiensis</i>	Sea Rush	20	5
Sedges	<i>Isolepis nodosa</i>	Knobby Club-sedge	40	3
	<i>Gahnia trifida</i>	Coast Saw-sedge	30	23
	<i>Gahnia clarkei</i>	Tall Saw-sedge	20	60
	<i>Isolepis inundata</i>	Swamp Club-sedge	20	8
Ferns	<i>Pteridium esculentum</i>	Austral Bracken	20	0.4
Grasses	<i>Phragmites australis</i>	Common Reed	30	12
	<i>Agrostis avenacea</i>	Common Blown Grass	30	4
	<i>Poa</i> sp.	Tussock Grass	20	0.4
Weeds	* <i>Holcus lanatus</i>	Yorkshire Fog	40	2
	* <i>Aira caryophyllea</i>	Silvery Hair-grass	30	3
	* <i>Hypochoeris radicata</i>	Cat's Ear	30	0.6
	* <i>Conyza bonariensis</i>	Tall Fleabane	20	3
	* <i>Centaurium tenuiflorum</i>	Branched Centaury	20	2