

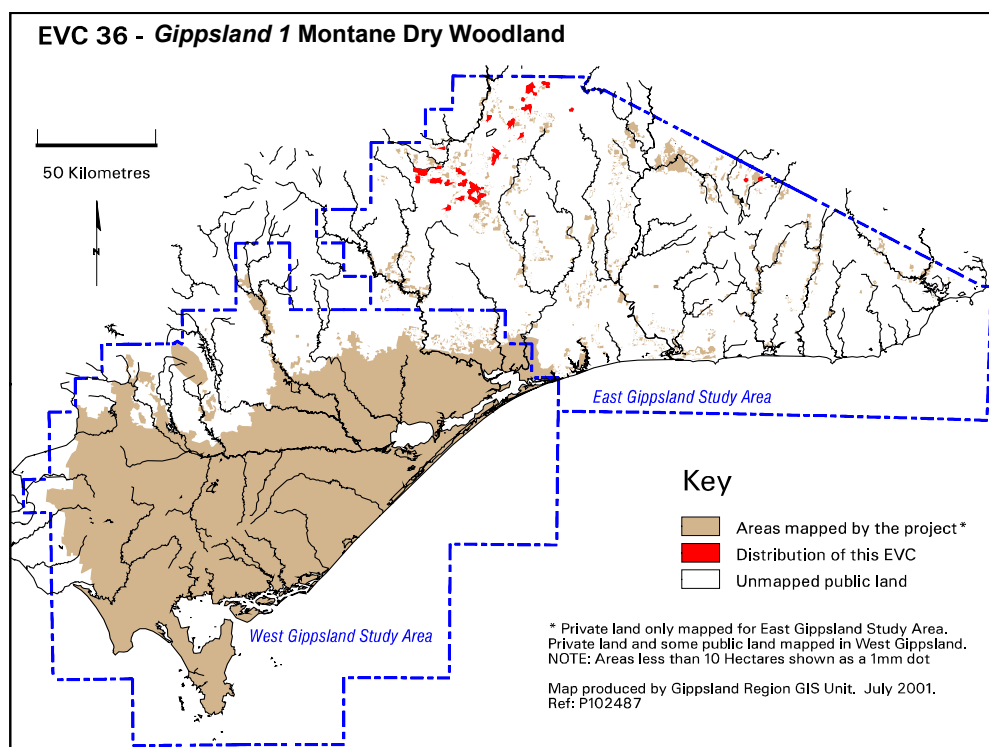
EVC 36 Montane Dry Woodland

Occurs on dry and exposed mid to upper slopes at montane elevations, often extending onto ridges in high rainfall areas. The overstorey trees vary from an open forest to an open woodland, according to altitude, precipitation and frequency of fire. Generally the lower rainfall, less fertile geologies support a shrubby understorey with a lower overall species diversity.

Description below is from Gippsland RFA (Commonwealth of Australia and NRE, 1999) and additional information from East Gippsland study area mapping.

Floristic Community 36-02 *Gippsland 1 Montane Dry Woodland*

Elevation (metres above sea level)	950-1200
Average rainfall p.a. (mm)	Average annual precipitation is relatively low at 900 mm
Topography	Dry and exposed mid to upper slopes at montane elevations
Geology	Various
Soils	Clay
Related/adjacent EVCs/FCs	Tableland Damp Forest, Montane Grassy Woodland
Present land use	Agriculture, grazing
Present distribution	Bowen Mountains, around Mt Tambo and along Splitters Range Road east of Omeo, around Mt Nugong and near Mt Delusion
Examples of sites/quadrats/lists	North-east of Mount George on Dry Gully Road (west of Omeo)
Total Area (ha)/ Number of polygons	2191/108
Group analysis no.	Not available for East Gippsland Study Area



Vegetation: structure/floristics:

The overstorey is dominated by Candlebark *Eucalyptus rubida* and Broad-leaved Peppermint *E. dives*. In more exposed situations, Snow Gum *E. pauciflora* may occur as the sole dominant or in a mixture with either or both of these species. On more protected sites Narrow-leaf Peppermint *E. radiata* may be found in a mixture with *E. rubida* and *E. pauciflora*.

Several shrub species may be locally abundant, notably Common Cassinia *Cassinia aculeata*, Handsome Flat-pea *Platylobium formosum*, Grey Guinea-flower *Hibbertia obtusifolia*, Mountain Beard-heath *Leucopogon hookeri* and Honey-pots *Acrotriche serrulata*. Around Omeo, other common shrubs include Austral Indigo *Indigofera australis*, Ploughshare Wattle *Acacia gunnii* and Daphne Heath *Brachyloma daphnoides*. Silver Wattle *Acacia dealbata* predominantly occurs in shrub form, rarely attaining a height greater than 2m. These shrubs are well adapted to relatively harsh environments of this EVC.

The ferns Austral Bracken *Pteridium esculentum* and Mother Shield-fern *Polystichum proliferum* may form dense stands.

A characteristic feature of *Gippsland 1* Montane Dry Woodland is the diversity of the ground flora though it is structurally dominated by 'fine-leaved' Tussock Grasses *Poa* spp. Other large graminoids include Spiny-headed Mat-rush *Lomandra longifolia* and Tasman Flax-lily *Dianella tasmanica*. Forbs are diverse in this floristic community and can cover much of the ground stratum in between tussock-forming graminoids. Dominant forbs include Bidgee Widgee *Acaena novae-zelandiae*, Prickly Woodruff *Asperula scoparia*, Common Raspwort *Gonocarpus tetragynus*, Hairy Pennywort *Hydrocotyle hirta*, Prickly Starwort *Stellaria pungens* and Cotton Fireweed *Senecio quadridentatus*.

Twining Glycine *Glycine clandestina* and Mountain Clematis *Clematis aristata* are the common climbers.

Comments:

Species present in this EVC are typical of dry, moist and cold environments.