

Gippsland Vegetation Types: Ecological Vegetation Classes (EVC's)

EVC description derived from Davies et.al (2001) Ecological Vegetation Class Mapping at 1:25 000 in Gippsland.

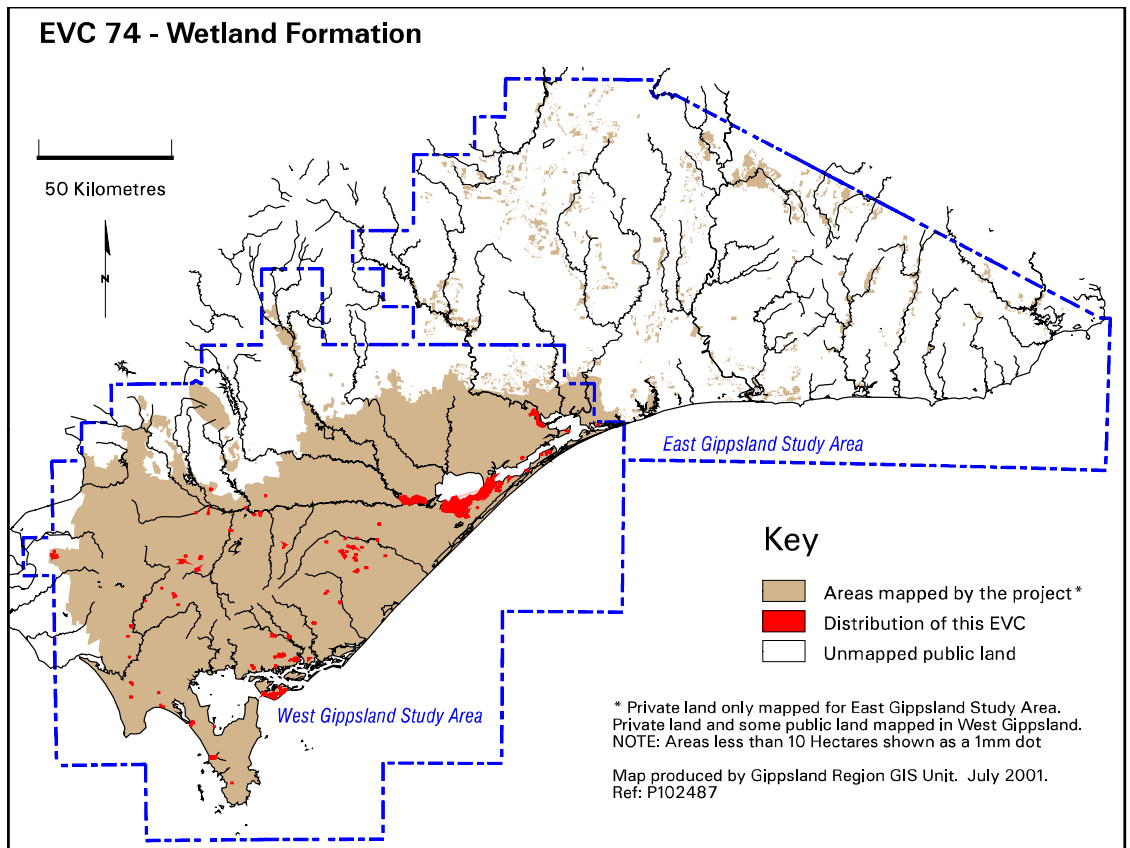
EVC 74 Wetland Formation

A broad EVC that incorporates a range of freshwater wetlands as listed below in the table. Occurs in topographic depressions associated with standing water ranging from permanent to ephemeral water bodies. Structurally, this EVC can consist of herbland, sedgeland and rushland elements and is characterised by the lack of woody plants (shrubs and trees).



Wetland Formation at Macleod Morass, Bairnsdale-Paynesville Road. Photo: John Davies 1995.

Elevation (metres above sea level)	<150
Average rainfall p.a. (mm)	<700
Topography	Plains, undulating plains, gullies, drainage depressions
Geology	Quaternary swamp and lagoonal deposits
Soils	Deep peat, clay, silt, sand
Related/adjacent EVCs/FCs	Sedge Wetland
Present land use	Agriculture, nature conservation, recreation, water storage, aquaculture
Present distribution	South and West Gippsland, Gippsland lakes area, Wilsons Promontory National Park
Examples of sites/quadrats/lists	Lake Wellington, Lake King, Lake Coleman, Sale area, Darby River (Wilson's Promontory National Park)
Total Area(ha)/ Number of polygons	6,206/265



Vegetation: structure/floristics:

Common species in Wetland Formation include Water-ribbons *Triglochin procerum* s.l, Amphibious Water-milfoil *Myriophyllum simulans*, Running Marsh-flower *Villarsia reniformis*, Yellow Bladderwort *Utricularia australis*, Common Duckweed *Lemna disperma* and Tall Spike-sedge *Eleocharis sphacelata*.

Comments:

Wetland Formation is closely related to Sedge Wetland that dominates similar waterlogged sites in low rainfall areas of the Gippsland plains and Wilsons Promontory National Park. These wetland EVCs eventually merge into Riparian Scrub, Swamp Scrub and Wet Heathland as the period of waterlogging decreases. Classification is difficult as many of these habitats are species depauperate and floristic analysis of quadrats containing few plant species is technically difficult due to a lack of linkages of species through common quadrats.

Gippsland species list including species frequency and fidelity.

Fidelity:

Rating of faithfulness of a species to an EVC or Floristic Community. Highest fidelity rating indicated by an "F" ie species only recorded in respective group.

% Frequency:

Percentage occurrence of a species/taxa in an EVC or Floristic Community – **NB. Species highlighted in red are the most frequent and important.**

* = weed ie: non native

Rarity categories from NRE's Flora Information System (FIS).

EVC 74: WETLAND FORMATION

Lifeform	Scientific Name	Common Name	% Fr	F
Shrubs	<i>Melaleuca squarrosa</i>	Scented Paperbark	15	3
	<i>Melaleuca ericifolia</i>	Swamp Paperbark	15	1
Herbs	<i>Triglochin procerum</i> s.l	Water-ribbons	77	49
	<i>Myriophyllum simulans</i>	Amphibious Milfoil	46	92
	<i>Villarsia reniformis</i>	Running Marsh-flower	46	17
	<i>Utricularia australis</i>	Yellow Bladderwort	38	231
	<i>Lemna disperma</i>	Common Duckweed	38	58
	<i>Crassula helmsii</i>	Swamp Stonecrop	23	25
	<i>Potamogeton ochreatus</i>	Blunt Pondweed	15	F
	<i>Potamogeton tricarinatus</i>	Floating Pondweed	15	46
	<i>Hydrocotyle pterocarpa</i>	Wing Pennywort	15	26
	Sedges	<i>Eleocharis sphacelata</i>	Tall Spike-sedge	54
<i>Isolepis fluitans</i>		Floating Club-sedge	31	26
<i>Baumea</i>		Fine/Soft Twig-sedge	23	25
<i>arthrophylla/rubiginosa</i>				
<i>Eleocharis acuta</i>		Common Spike-sedge	15	7
<i>Carex appressa</i>		Tall Sedge	15	2
<i>Juncus procerus</i>		Tall Rush	23	20
Rushes				
Weeds	* <i>Rumex conglomeratus</i>	Clustered Dock	15	9