

Gippsland Vegetation Types: Ecological Vegetation Types (EVC's)

EVC description derived from Davies et.al (2001) Ecological Vegetation Class Mapping at 1:25 000 in Gippsland.

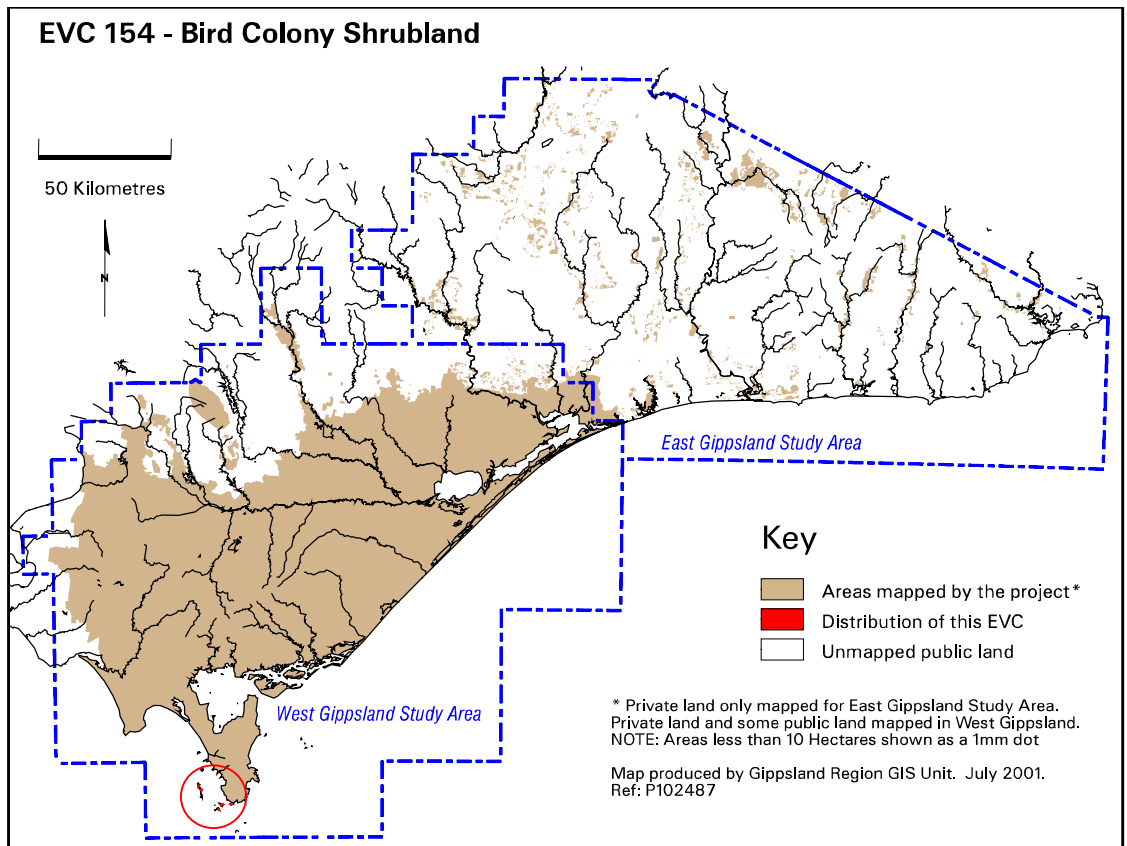
EVC 154 Bird Colony Shrubland

A shrubland confined to topographically protected slopes of granitic ocean islands south and west of Wilsons Promontory.



The lush green vegetation is Bird Colony Shrubland on Great Glennie Island. Photo: John Davies 1998.

Elevation (metres above sea level)	<100
Average rainfall p.a. (mm)	900
Topography	Topographically protected north-east to south-east facing slopes of the islands
Geology	Devonian granite
Soils	Dark brown, loamy sand
Related/adjacent EVCs/FCs	Spray-zone Coastal Shrubland
Present land use	Nature conservation
Present distribution	Restricted to the islands south and west of Wilsons Promontory including Great Glennie, Anser, Kanowna and Wattle Islands
Examples of sites/quadrats/lists	Anser Island (F48841, F48843)
Total Area(ha)/ Number of polygons	49/8



Vegetation: structure/floristics:

Bird Colony Shrubland is dominated by Australian Hollyhock *Malva australiana* that in late spring and early summer forms a spectacular display of white and mauve flowers on islands such as Anser Island and Great Glennie Island. Other dominant species include Seaberry Saltbush *Rhagodia candolleana* subsp. *candolleana* and White Elderberry *Sambucus gaudichaudiana*. Species, which may also be present, include Four-leaved Allseed *Polycarpon tetraphyllum*, Spicy Everlasting *Ozothamnus argophyllus* and Drooping She-oak *Allocasuarina verticillata*.

Comments:

The soil is subject to intense seasonal trampling and tunnelling by large colonies of mutton-birds, penguins and other seabirds. Bird faeces increase fertility of these soils.

Gippsland species list including species frequency and fidelity.

Fidelity:

Rating of faithfulness of a species to an EVC or Floristic Community. Highest fidelity rating indicated by an "F" ie species only recorded in respective group.

% Frequency:

Percentage occurrence of a species/taxa in an EVC or Floristic Community – NB. Species highlighted in red are the most frequent and important.

* = weed ie: non native

Rarity categories from NRE's Flora Information System (FIS).

EVC 154: BIRD COLONY SHRUBLAND

Species	% Frequency	Fidelity
*Polycarpon tetraphyllum	50.00	F
Malva australiana	100.00	310.02
Ozothamnus argophyllus	50.00	309.91
Rhagodia candolleana ssp. candolleana	100.00	28.18
Sambucus gaudichaudiana	100.00	13.78
Allocasuarina verticillata	50.00	3.41