

Gippsland Vegetation Types: Ecological Vegetation Classes (EVC's)

EVC description derived from Davies et.al (2001) Ecological Vegetation Class Mapping at 1:25 000 in Gippsland.

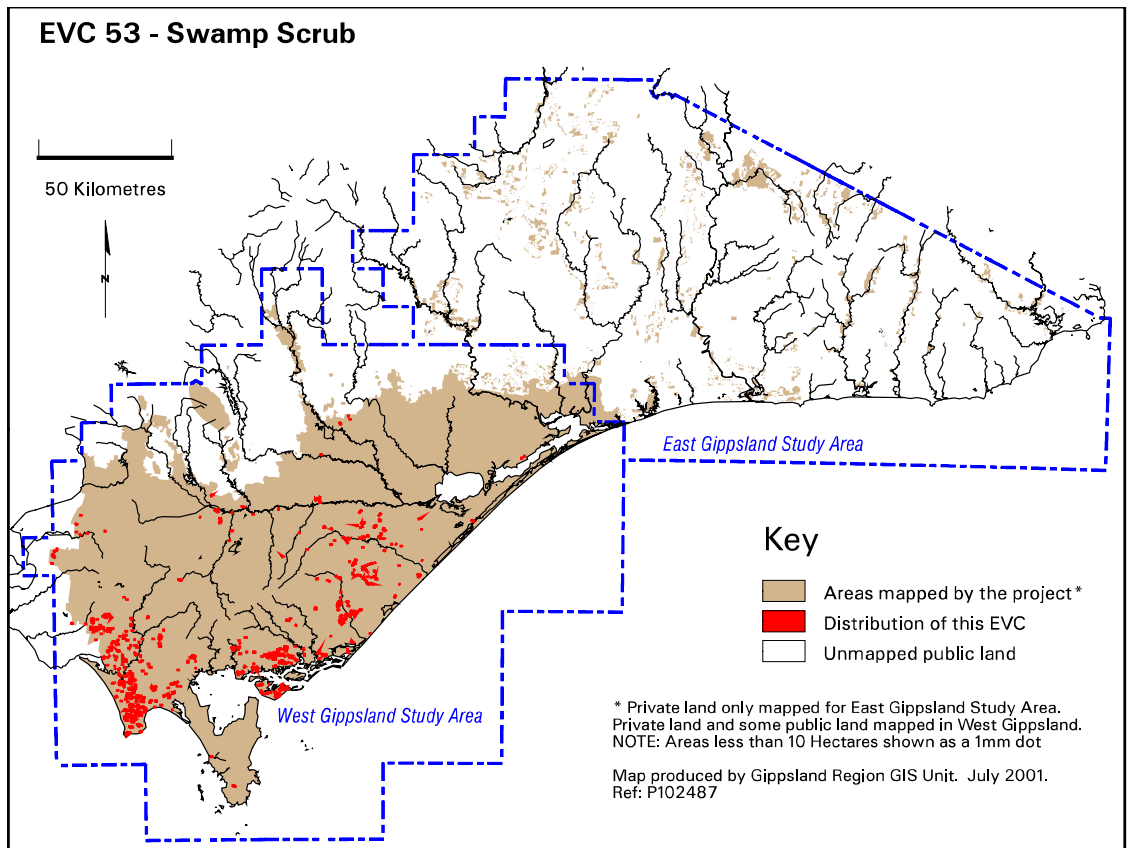
EVC 53 Swamp Scrub

Closed scrub at low elevations on alluvial deposits along streams or on poorly drained sites with higher nutrient availability. Soils vary from organic loams to fine silts and peats which are inundated during the wetter months of the year. Often lacks a tree overstorey and is typically dominated by shrubs of Swamp Paperbark *Melaleuca ericifolia* which often form a dense thicket. Where light penetrates to ground level, a moss/lichen/liverwort herbaceous ground cover is often present.



Swamp Scrub inland from coastal dunes. Dumbarton Downs area, South Gippsland. Photo: John Davies 1997.

Elevation (metres above sea level)	<60
Average rainfall p.a. (mm)	500-1000
Topography	Undulating plain
Geology	Quaternary and Tertiary deposits
Soils	Variable, ranging from peat on poorly drained sites and on lower slopes prone to periodic seepages, to organic loam on the margins of freshwater wetlands.
Related/adjacent EVCs/FCs	Riparian Scrub, Estuarine Wetland, Lowland Forest, <i>Gippsland</i> Plains Grassy Forest, <i>South Gippsland</i> Grassy Forest, Heathy Woodland
Present land use	Agriculture, nature conservation
Present distribution	Gippsland and South Gippsland plains, Wilsons Promontory National Park
Examples of sites/quadrats/lists	Low Rd, Won Wron State Forest (U23344), Port Welshpool (U23220), Gellions Run, South Gippsland (U23211)
Total Area(ha)/ Number of polygons	2,776/705



Vegetation: structure/floristics:

Dominated by Swamp Paperbark *Melaleuca ericifolia* with an understorey that varies from quite depauperate to herbaceous depending on the density of the canopy. Species present often include Kidney-weed *Dichondra repens*, Bidgee-widgee *Acaena novae-zelandiae*, *Poa* spp. and *Geranium* spp.

Swamp Scrub is characterised by dense stems of Swamp Paperbark *Melaleuca ericifolia* and a moss/lichen/liverwort herbaceous ground cover where light penetrates to groundlevel. In these circumstances, species often present are Spiny-headed Mat-rush *Lomandra longifolia*, Slender Bog-sedge *Schoenus lepidosperma*, *Hydrocotyle* spp, Common Scale-rush *Lepyrodia muelleri* and Ivy-leaf Violet *Viola hederacea* but may include wetland elements associated with areas of standing water such as Centella *Centella cordifolia*, Swamp Club-sedge *Isolepis inundata*, Buttercup *Ranunculus* spp., Water-ribbons *Triglochin procerum* and Common Reed *Phragmites australis*. It may be depauperate where deep litter covers the ground and little light penetrates the canopy.

Comments:

Swamp Scrub would have been extensive in the Gippsland Plains, Lake Wellington area before agricultural clearing and the opening of the Gippsland Lakes to the sea at Lakes Entrance which resulted in a more saline EVC, Estuarine Wetland, developing.

Gippsland species list including species frequency and fidelity.

Fidelity:

Rating of faithfulness of a species to an EVC or Floristic Community. Highest fidelity rating indicated by an "F" ie species only recorded in respective group.

% Frequency:

Percentage occurrence of a species/taxa in an EVC or Floristic Community – NB. Species highlighted in red are the most frequent and important.

*** = weed ie: non native.**

Rarity categories from NRE's Flora Information System (FIS).

EVC 53: SWAMP SCRUB

Lifeform	Scientific Name	Common Name	% Fr	F	
Trees	<i>Eucalyptus viminalis</i>	Manna Gum	18	1	
Shrubs	<i>Melaleuca ericifolia</i>	Swamp Paperbark	42	4	
Herbs	<i>Persicaria decipiens</i>	Slender Knotweed	39	58	
	<i>Alternanthera denticulata</i>	Lesser Joyweed	26	310	
	<i>Triglochin procerum</i> s.l	Water-ribbons	26	16	
	<i>Urtica incisa</i>	Scrub Nettle	24	3	
	<i>Rumex bidens</i>	Mud Dock	16	186	
	<i>Persicaria praetermissa</i>	Spotted Knotweed	16	62	
	<i>Crassula helmsii</i>	Swamp Stonecrop	16	23	
	Sedges	<i>Carex appressa</i>	Tall Sedge	42	6
		<i>Eleocharis acuta</i>	Common Spike-sedge	26	17
		<i>Carex fascicularis</i>	Tassel Sedge	18	24
Rushes	<i>Isolepis inundata</i>	Swamp Club-sedge	16	7	
	<i>Juncus articulatus</i> x <i>holoschoenus</i>	Rush	16	12	
Creepers/ Vines	<i>Calystegia sepium</i>	Large Bindweed	18	217	
Ferns	<i>Azolla filiculoides</i>	Pacific Azolla	16	186	
Grasses	<i>Phragmites australis</i>	Common Reed	29	15	
	<i>Agrostis avenacea</i>	Common Blown Grass	16	2	
	<i>Poa</i> sp.	Tussock Grass	16	0.3	
Weeds	* <i>Rumex conglomeratus</i>	Clustered Dock	34	40	
	* <i>Cyperus eragrostis</i>	Drain Flat-sedge	32	46	
	* <i>Hypochoeris radicata</i>	Cat's Ear	29	0.6	
	* <i>Sonchus oleraceus</i>	Sow-thistle	24	2	
	* <i>Cirsium vulgare</i>	Spear Thistle	24	1	
	* <i>Rorippa palustris</i>	Yellow Marsh-cress	21	F	
	* <i>Callitriche stagnalis</i>	Water Starwort	21	41	
	* <i>Paspalum distichum</i>	Water Couch	21	27	
	* <i>Aster subulatus</i>	Aster-weed	18	14	
	* <i>Cotula coronopifolia</i>	Water Buttons	18	12	
	* <i>Sonchus asper</i>	Rough Sow-thistle	18	3	
	* <i>Ranunculus repens</i>	Creeping Buttercup	16	13	
	* <i>Solanum nigrum</i>	Black Nightshade	18	4	
* <i>Holcus lanatus</i>	Yorkshire Fog	16	0.8		