

Gippsland Vegetation Types: Ecological Vegetation Classes (EVC's)

EVC description derived from Davies et.al (2001) Ecological Vegetation Class Mapping at 1:25 000 in Gippsland.

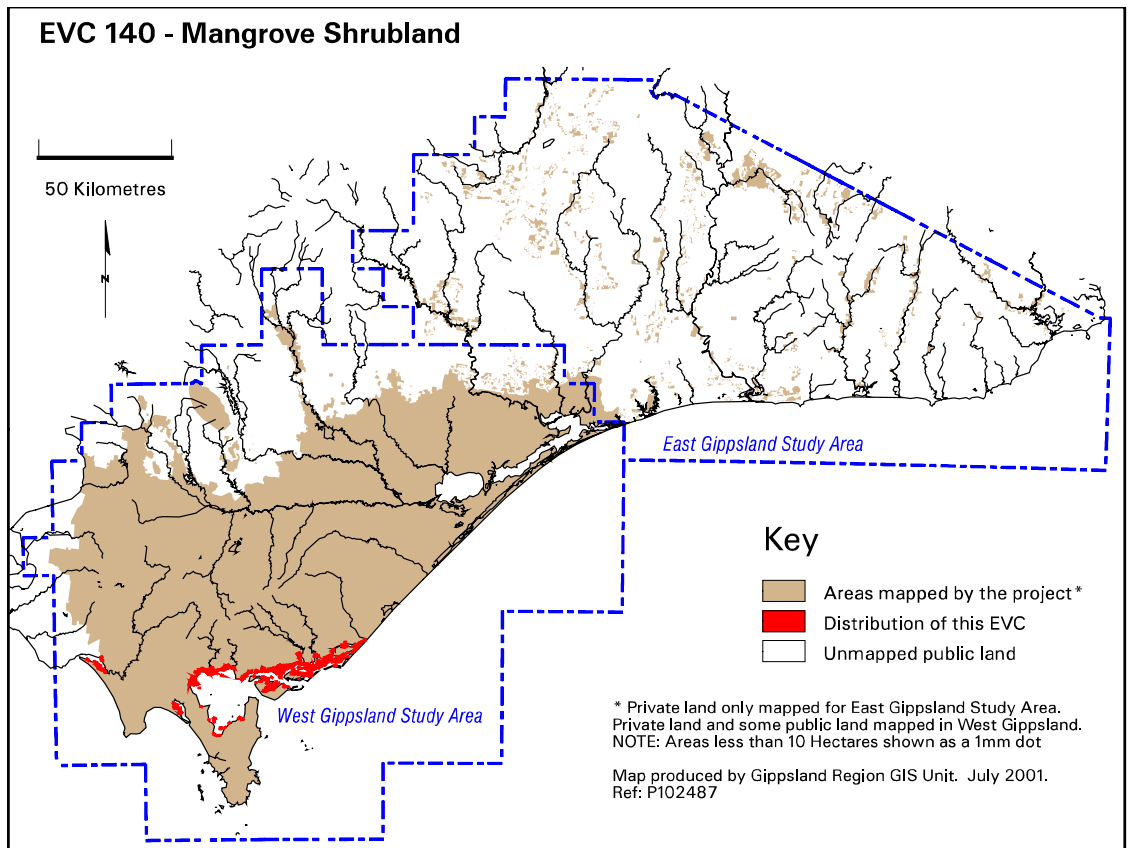
EVC 140 Mangrove Shrubland

Confined to protected low energy coastal environments on mud flats within the tidal zone. It is dominated by White Mangrove *Avicennia marina* subsp. *australasica* and is usually associated with Coastal Saltmarsh.



Mangrove Shrubland, Red Bluff area, Corner Inlet. Photo: John Davies 1997.

Elevation (metres above sea level)	Sea-level
Average rainfall p.a. (mm)	650-950
Topography	Poorly drained, low energy coastal flats
Geology	Quaternary deposits
Soils	Deep, salt-affected silt, sand and clay
Related/adjacent EVCs/FCs	Coastal Saltmarsh
Present land use	Nature conservation, recreation
Present distribution	South Gippsland: Anderson Inlet, Corner and Shallow Inlets and islands within the Nooramunga Marine and Coastal Park. The eastern limit in the study area is the western end of the Ninety Mile Beach at McLoughlins Beach
Examples of sites/quadrats/lists	Toora, Port Albert, Millers Landing (F48852) [Wilson's Promontory National Park]
Total Area(ha)/ Number of polygons	3,599/245



Vegetation: structure/floristics:

Mangrove Shrubland develops in areas of “estuaries and embayments where sufficient shelter from strong wave action and currents, where fine sediment can be deposited and accumulate” (Costermans 1983). It is commonly dominated by only one species, White Mangrove *Avicennia marina* subsp. *australasica* that forms dense thickets which are mapped as Mangrove Shrubland whilst stunted scattered individual mangroves in halophyte-dominated areas are mapped as Coastal Saltmarsh. Dwarf Grass-wrack *Zostera muelleri* may also be present.

Comments:

Victoria is the southern-most limit of range for mangroves and in this cooler environment they rarely grow over 1.5m in height. Mangrove Shrubland reaches its national southern limit of range at Millers Landing, Wilsons Promontory National Park.

Gippsland species list including species frequency and fidelity.

Fidelity: Rating of faithfulness of a species to an EVC or Floristic Community. Highest fidelity rating indicated by an “F” ie species only recorded in respective group.

% Frequency: Percentage occurrence of a species/taxa in an EVC or Floristic Community – **NB. Species highlighted in red are the most frequent and important.**
= weed ie: non native.
Rarity categories from NRE’s Flora Information System (FIS).

EVC 140: MANGROVE SHRUBLAND

Lifeform	Scientific Name	Common Name	% Fr	F
Shrub	<i>Avicennia marina</i> ssp. <i>australasica</i>	White Mangrove	67	807
Grass	<i>Zostera muelleri</i>	Dwarf Grass-wrack	50	F