

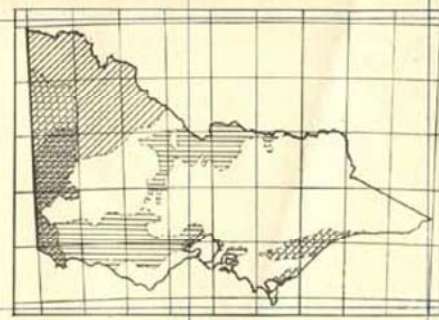
WATER RESOURCES

Prepared from information supplied by the State Rivers and Water Supply Commission

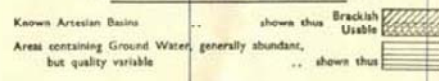
REFERENCE

- Gauging Stations now operating shown thus ●
- Gauging Stations—discontinued shown thus ◐
- Average Annual Discharges—in 1,000 Acrefeet shown thus 94.3
- Major Storages shown thus <
- Flood Warning Stations shown thus ⊙

NOTE—This map has been prepared from the most reliable information available at the time of publication and is subject to modification when detailed surveys and investigations are carried out.



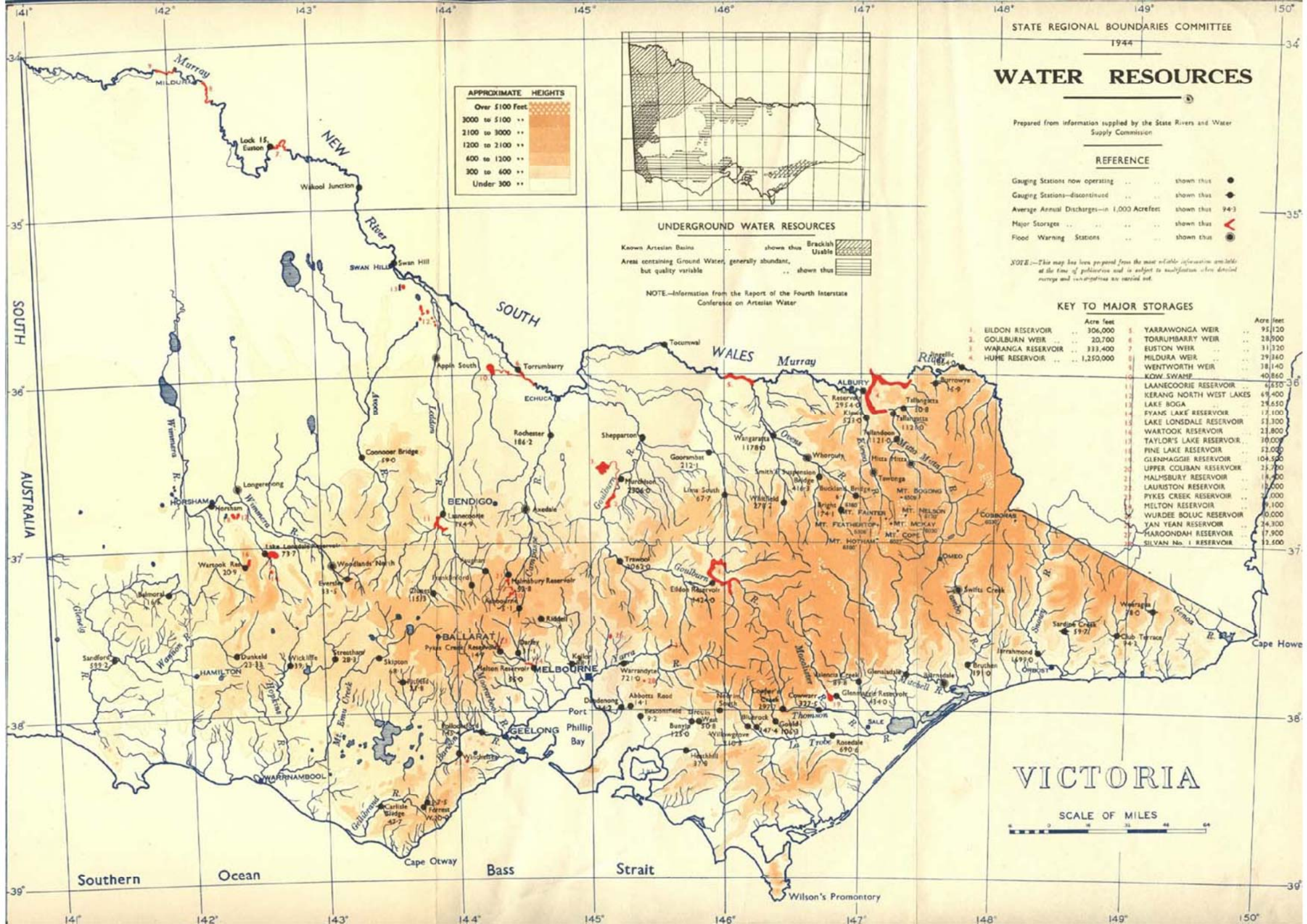
UNDERGROUND WATER RESOURCES



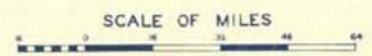
NOTE—Information from the Report of the Fourth Interstate Conference on Artesian Water

KEY TO MAJOR STORAGES

No.	Name	Acres	Acres	Name	Acres
1	EILDON RESERVOIR	306,000	5	YARRAWONGA WEIR	95,120
2	GOULBURN WEIR	20,700	6	TOORUMBARRY WEIR	28,900
3	WARANGA RESERVOIR	333,400	7	EUSTON WEIR	31,320
4	HUME RESERVOIR	1,250,000	8	MILDURA WEIR	29,360
			9	WENTWORTH WEIR	18,140
			10	KOW SWAMIE	40,860
			11	LAANECORIE RESERVOIR	6,850
			12	KERANG NORTH WEST LAKES	69,400
			13	LAKE BOGA	28,650
			14	PYANS LAKE RESERVOIR	17,100
			15	LAKE LONSDALE RESERVOIR	51,300
			16	WARTOOK RESERVOIR	23,800
			17	TAYLOR'S LAKE RESERVOIR	10,000
			18	PINE LAKE RESERVOIR	52,000
			19	GLENMAGGIE RESERVOIR	104,500
			20	UPPER COLIBAN RESERVOIR	25,700
			21	MALMSBURY RESERVOIR	18,400
			22	LAURISTON RESERVOIR	15,000
			23	PYKES CREEK RESERVOIR	27,000
			24	MELTON RESERVOIR	9,100
			25	WURDEE BOLUC RESERVOIR	0,000
			26	YAN YEAN RESERVOIR	24,300
			27	MARONDAH RESERVOIR	7,900
			28	SILVAN No. 1 RESERVOIR	12,500



VICTORIA



Southern Ocean

Bass Strait

Wilson's Promontory