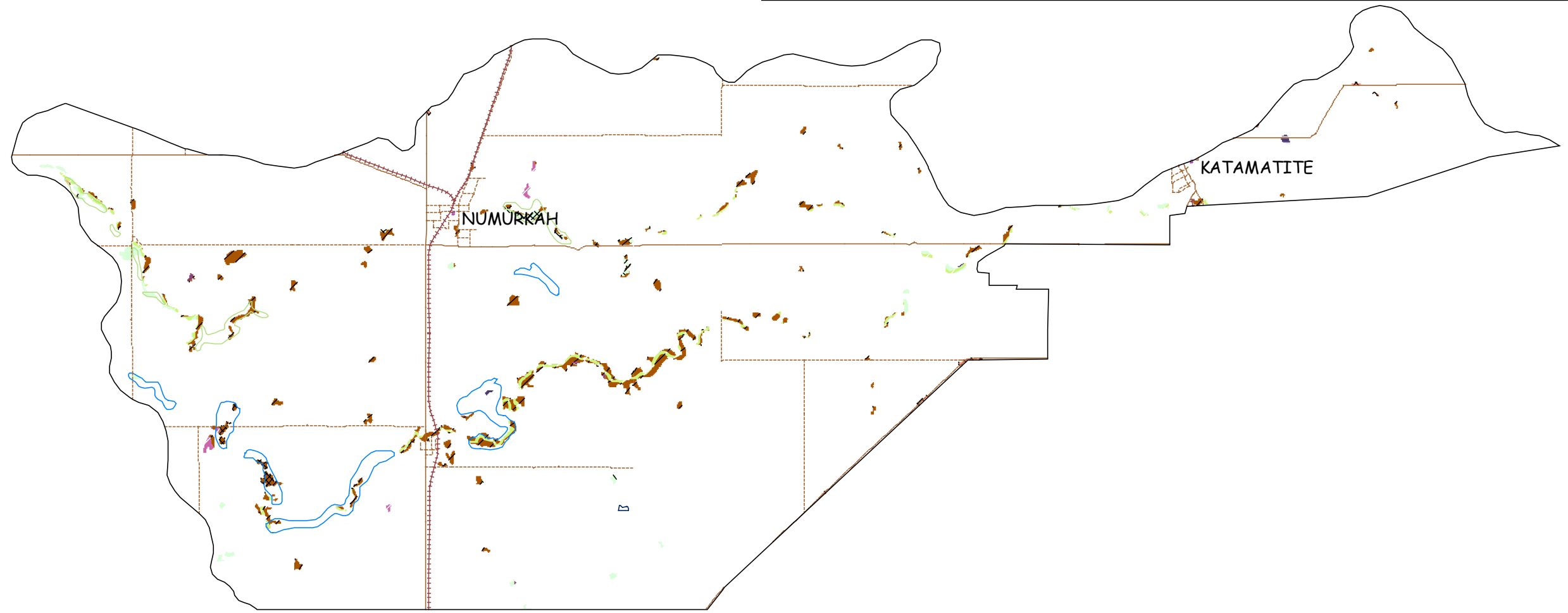
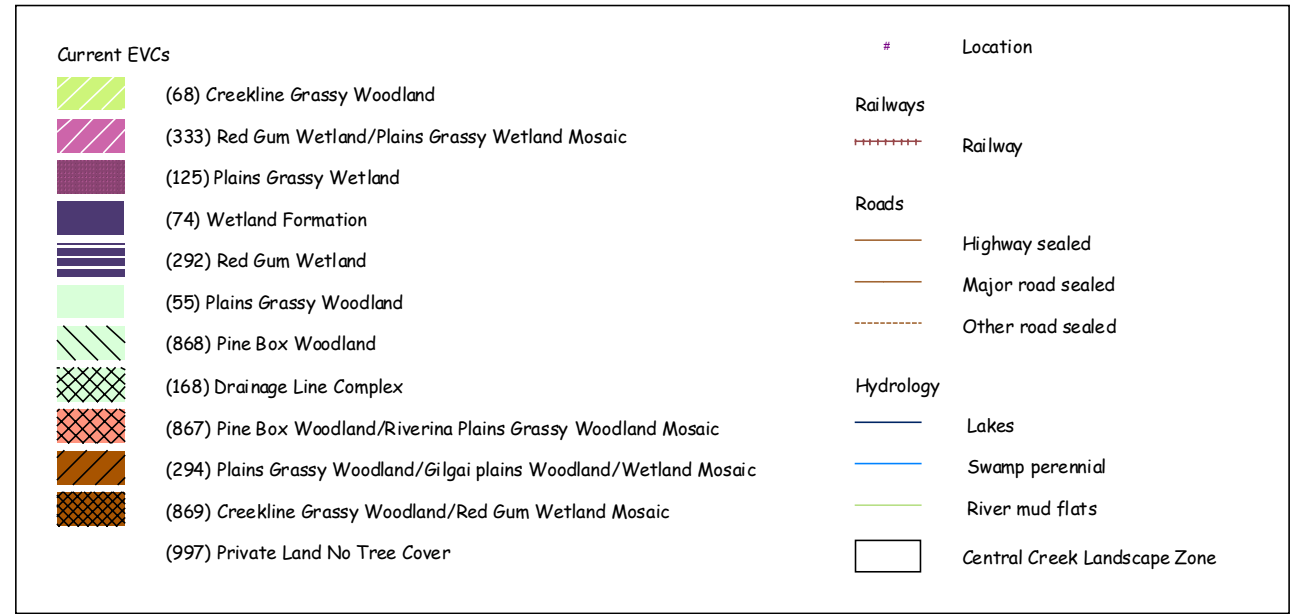
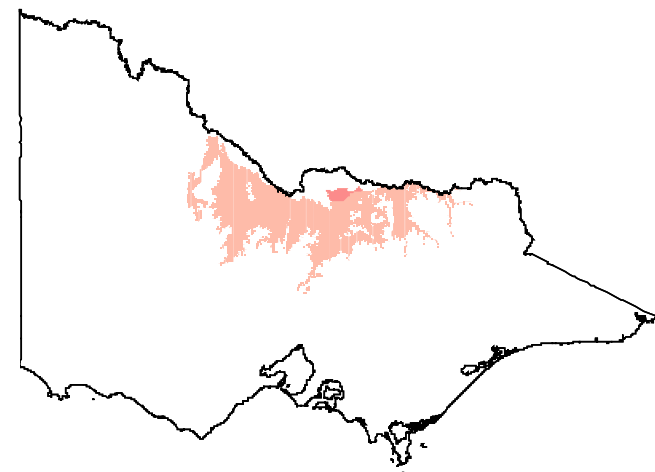
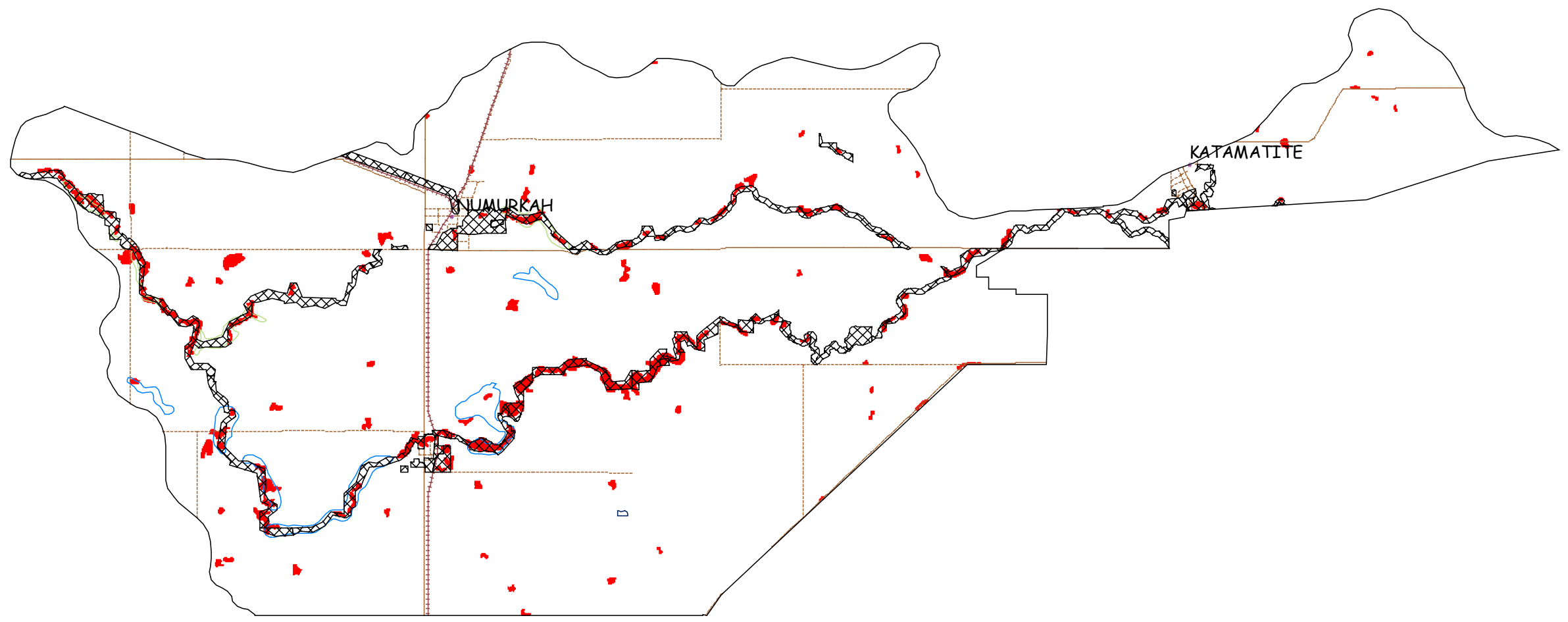
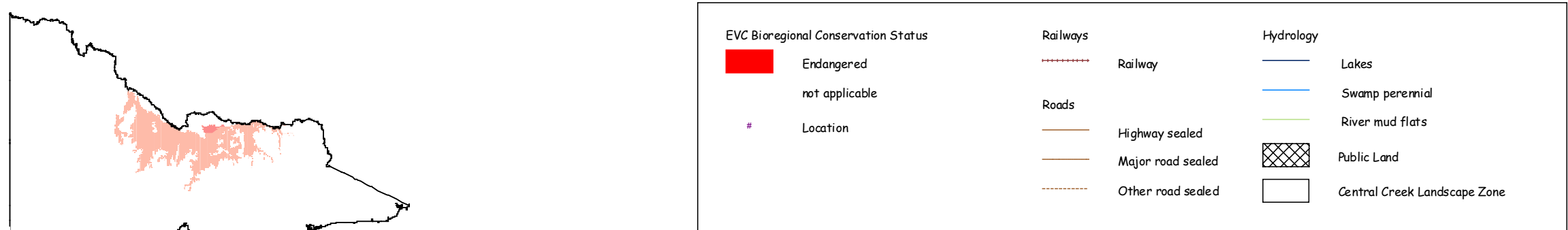


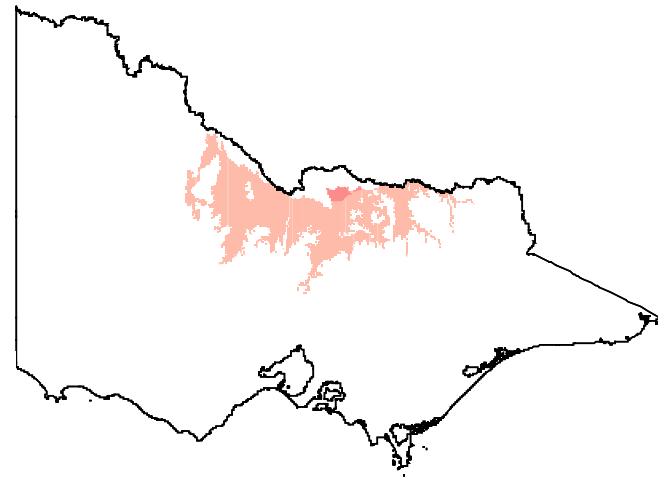
Map 29. Pre-1750 EVCs in the Central Creek Landscape Zone, Shepparton Irrigation Region - South



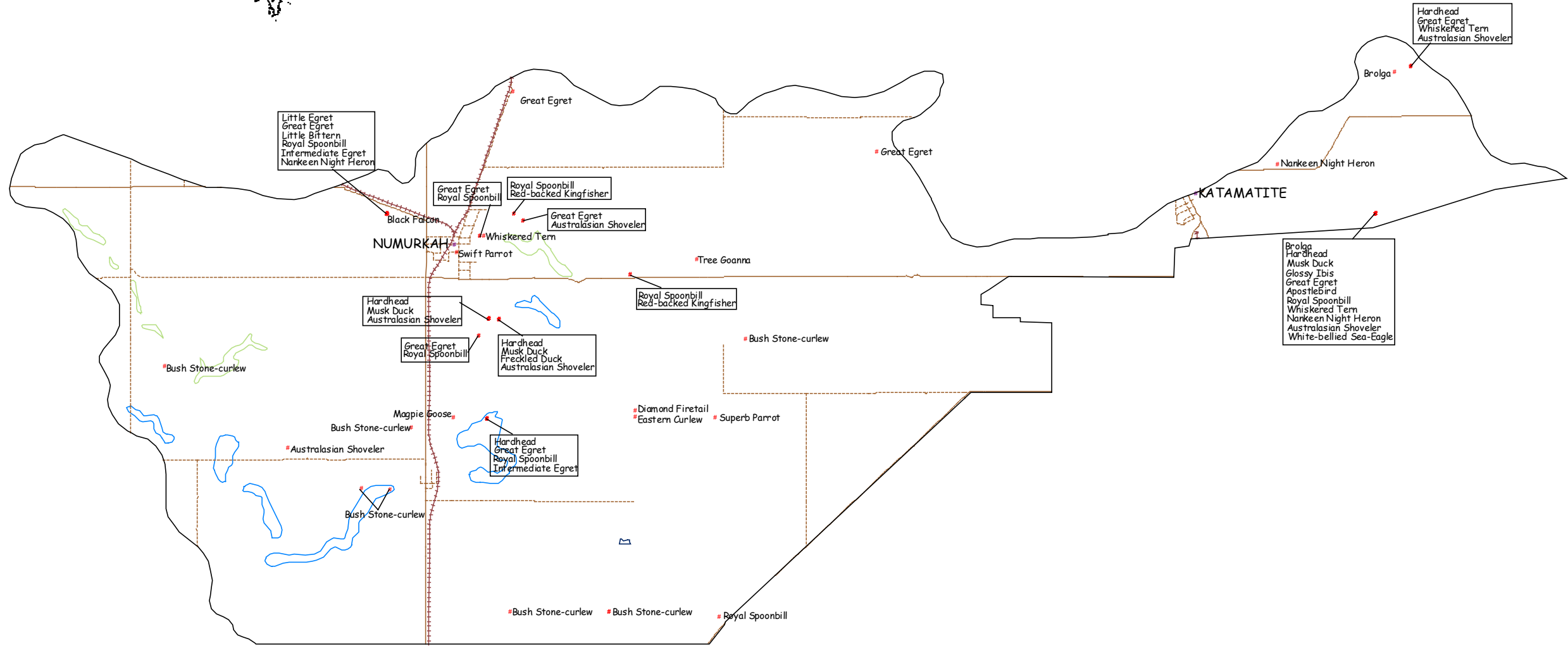
Map 30. Current EVCs in the Central Creek Landscape Zone, Shepparton Irrigation Region - South



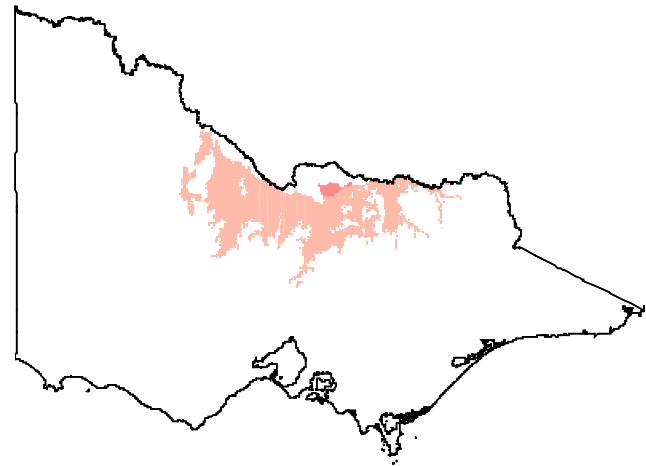
Map 31. Current EVC Conservation Significance and Public Land boundaries in the Central Creek Landscape Zone, Shepparton Irrigation Region - South



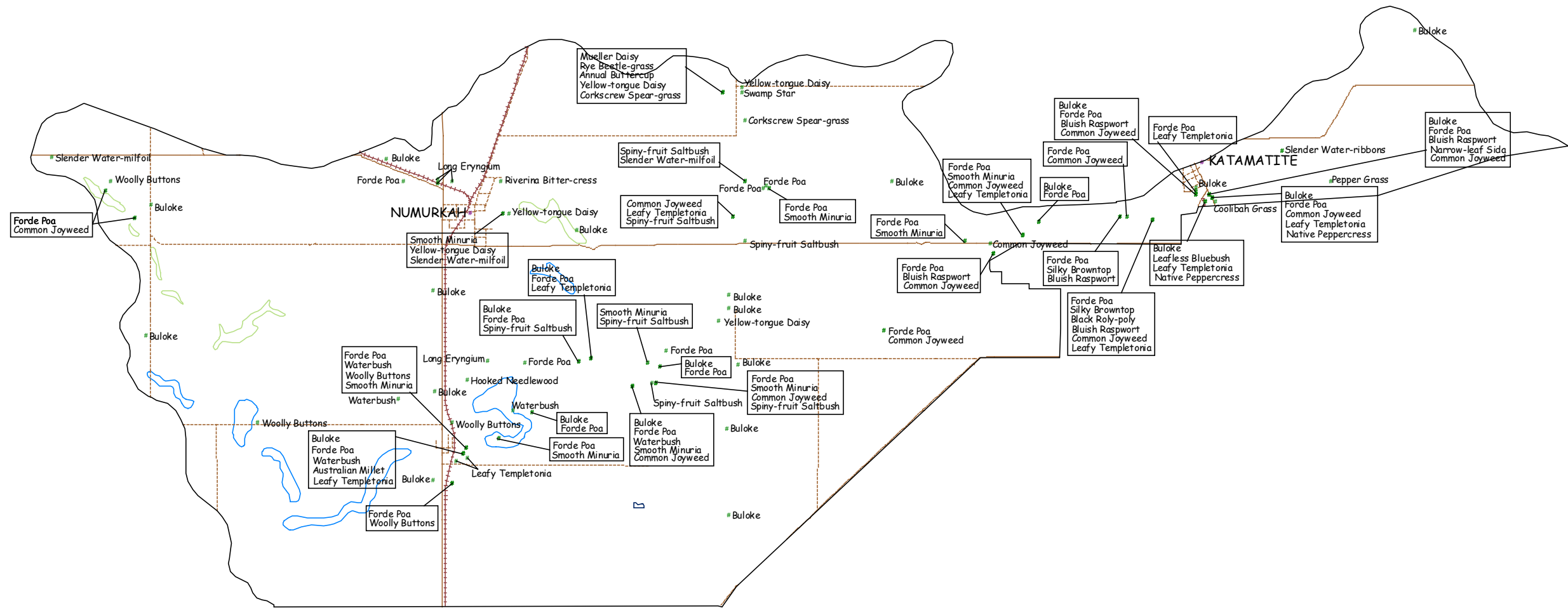
#	Threatened fauna species	-----	Other road sealed
#	Location	Hydrology	
-----	Railways	—	Lakes
+++++	Railway	—	Swamp perennial
-----	Roads	—	River mud flats
-----	Highway sealed	□	Central Creek Landscape Zone
-----	Major road sealed		



Map 32. Threatened Fauna in the Central Creek Landscape Zone, Shepparton Irrigation Region - South



#	Threatened flora species	-----	Other road sealed
#	Location	Hydrology	
Railways		—	Lakes
-----	Railway	—	Swamp perennial
Roads		—	River mud flats
—	Highway sealed	□	Central Creek Landscape Zone
—	Major road sealed		

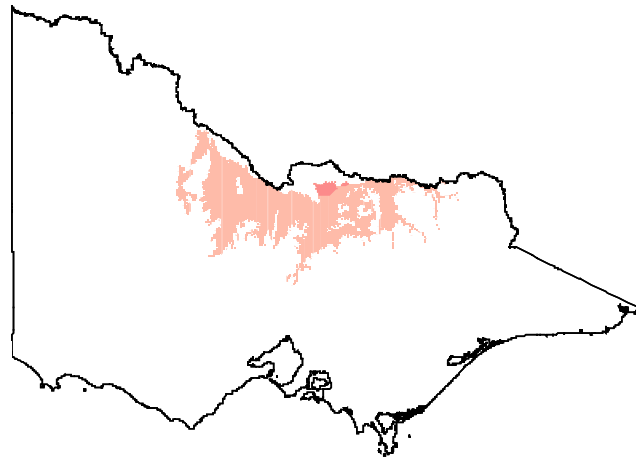


Prepared by Christie Boyle, January 2003
 Base Data from DPI GIS Corporate Library
 © Department of Sustainability & Environment
 The State of Victoria, 2003.

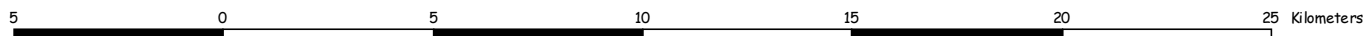
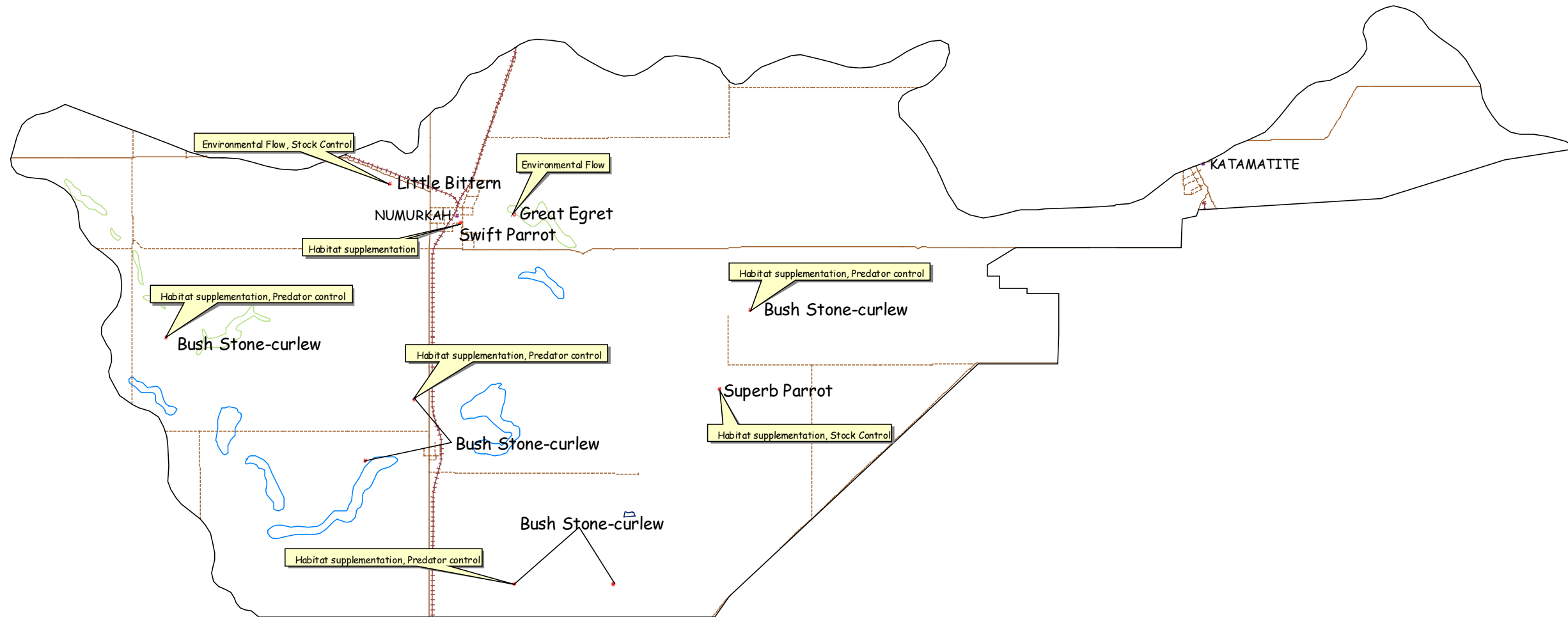
Disclaimer:
 This map is made using the best available information. The creators of this map do not warrant that it is free of error and do not accept liability for loss arising from use of this product beyond its original purpose.



Map 33. Threatened Flora in the Central Creek Landscape Zone, Shepparton Irrigation Region - South



#	1A fauna species	- - - - -	Other road sealed
#	Location	Hydrology	
		—	Lakes
		—	Swamp perennial
		—	River mud flats
		□	Central Creek Landscape Zone
Railways			
- - - - -	Railway		
Roads			
—	Highway sealed		
—	Major road sealed		



Map 34. 1A species and management actions in the Central Creek Landscape Zone, Shepparton Irrigation Region - South