

Pre-1750 EVCs





-  (870) Riverine Grassy Woodland/Riverina Plains Grassy Woodland Complex
-  (299) Unclassified Lunette Woodland
-  (873) Riverine Grassy Woodland/Black Box Chenopod Woodland/Wetland Mosaic
-  (872) Riverine Grassy Woodland/Riverina Plains Grassy Woodland/Black Box Chenopod Woodland Complex
-  (68) Creepline Grassy Woodland
-  (104) Lignum Wetland
-  (333) Red Gum Wetland/Plains Grassy Wetland Mosaic
-  (289) Moira Plain Wetland
-  (125) Plains Grassy Wetland
-  (300) Reed Swamp
-  (74) Wetland Formation
-  (292) Red Gum Wetland
-  (334) Lagoon Wetland
-  (321) Black Box Chenopod Woodland/Lignum Wetland Mosaic
-  (132) Plains Grassland
-  (55) Plains Grassy Woodland
-  (868) Pine Box Woodland
-  (168) Drainage Line Complex
-  (264) Sand Ridge Woodland
-  (867) Pine Box Woodland/Riverina Plains Grassy Woodland Mosaic
-  (103) Black Box Chenopod Woodland
-  (294) Plains Grassy Woodland/Gilgai plains Woodland/Wetland Mosaic
-  (295) Riverine Grassy Woodland
-  (871) Riverine Grassy Woodland/Gilgai Plain Woodland/Wetland/Riverina Plains Grassy Woodland
-  (255) Riverine Grassy Woodland/Riverine Sedgy Forest/Wetland Mosaic
-  (999) Unknown/Unclassified

 Location







Railways

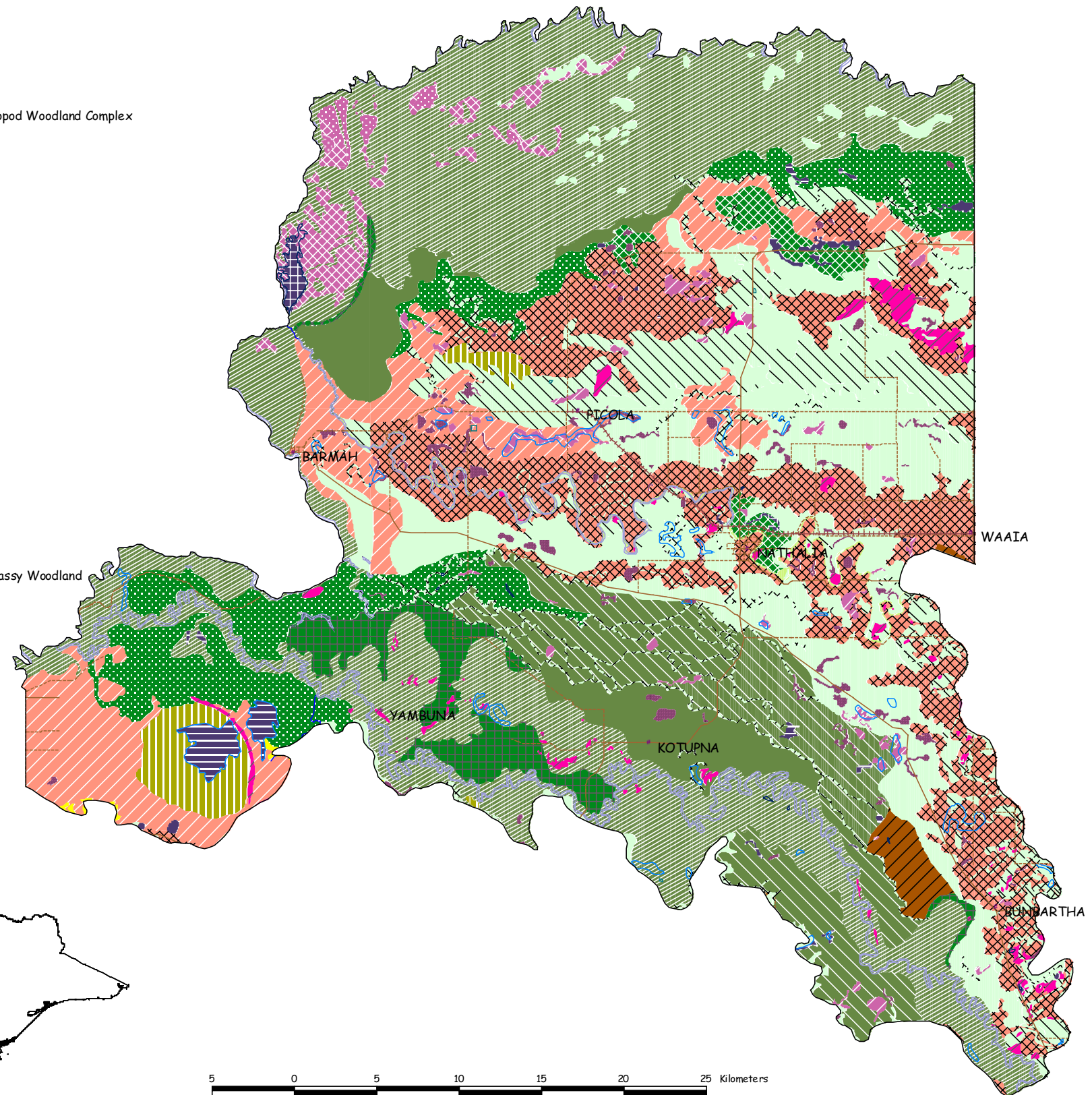
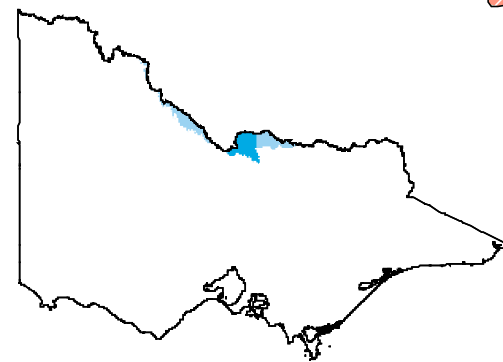
 Railway

Roads

-  Highway sealed
-  Major road sealed
-  Major road unsealed
-  Other road sealed

Hydrology

-  Perennial streams
-  Double line stream
-  Lakes
-  Reservoir
-  Swamp perennial
-  Barmah Landscape Zone



Map 16. Pre-1750 EVCs in the Barmah Landscape Zone, Shepparton Irrigation Region - North, Murray Fans bioregion

Current EVCs





-  (870) Riverine Grassy Woodland/Riverina Plains Grassy Woodland Complex
-  (299) Unclassified Lunette Woodland
-  (873) Riverine Grassy Woodland/Black Box Chenopod Woodland/Wetland Mosaic
-  (872) Riverine Grassy Woodland/Riverina Plains Grassy Woodland/Black Box Chenopod Woodland Complex
-  (68) Creekline Grassy Woodland
-  (104) Lignum Wetland
-  (333) Red Gum Wetland/Plains Grassy Wetland Mosaic
-  (289) Moira Plain Wetland
-  (125) Plains Grassy Wetland
-  (300) Reed Swamp
-  (74) Wetland Formation
-  (292) Red Gum Wetland
-  (334) Lagoon Wetland
-  (321) Black Box Chenopod Woodland/Lignum Wetland Mosaic
-  (55) Plains Grassy Woodland
-  (868) Pine Box Woodland
-  (168) Drainage Line Complex
-  (264) Sand Ridge Woodland
-  (867) Pine Box Woodland/Riverina Plains Grassy Woodland Mosaic
-  (103) Black Box Chenopod Woodland
-  (294) Plains Grassy Woodland/Gilgai plains Woodland/Wetland Mosaic
-  (295) Riverine Grassy Woodland
-  (871) Riverine Grassy Woodland/Gilgai Plain Woodland/Wetland/Riverina Plains Grassy Woodland
-  (255) Riverine Grassy Woodland/Riverine Sedgy Forest/Wetland Mosaic
-  (999) Unknown/Unclassified
-  (997) Private Land No Tree Cover

 Location

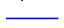





Railways

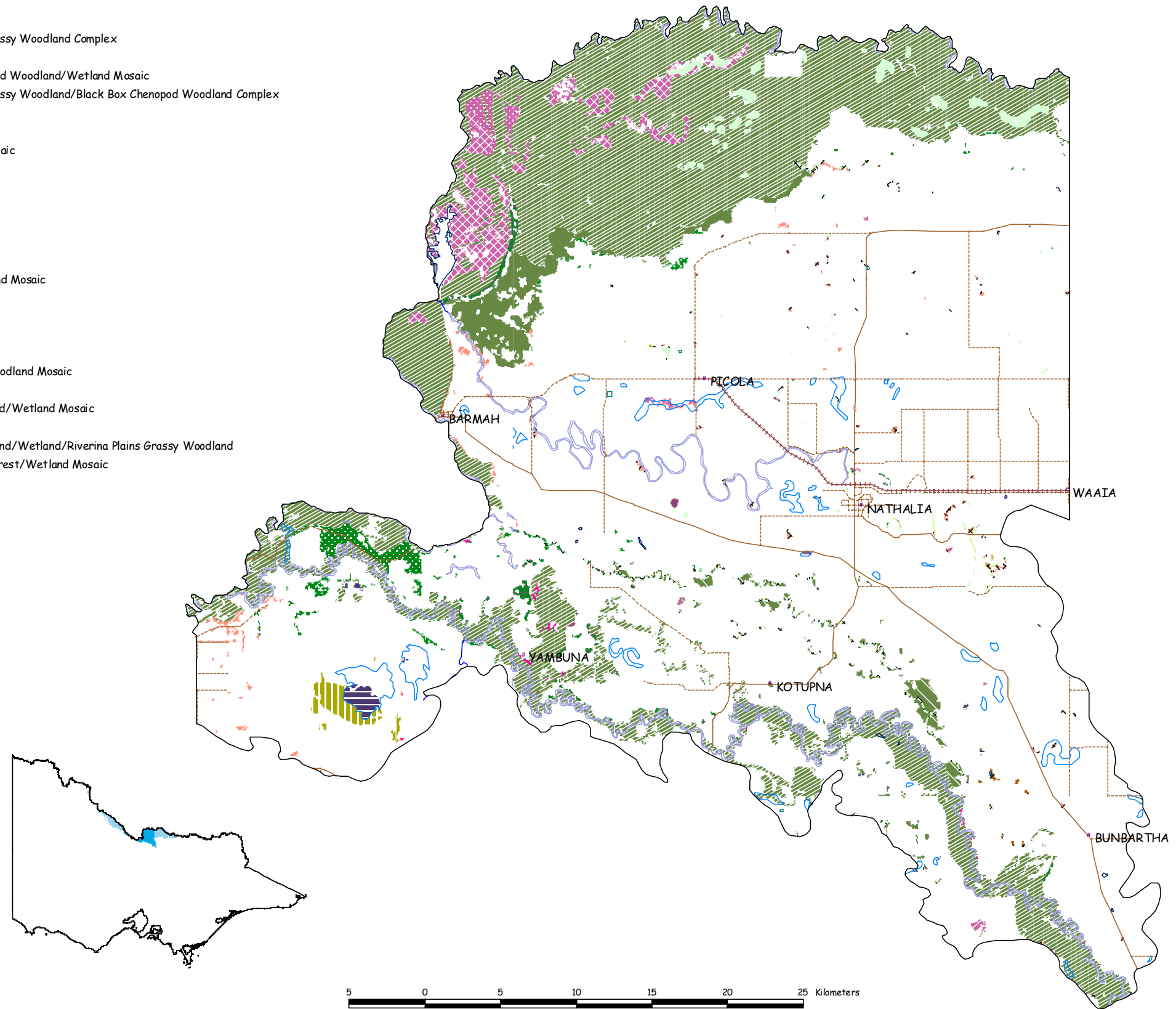
 Railway

Roads

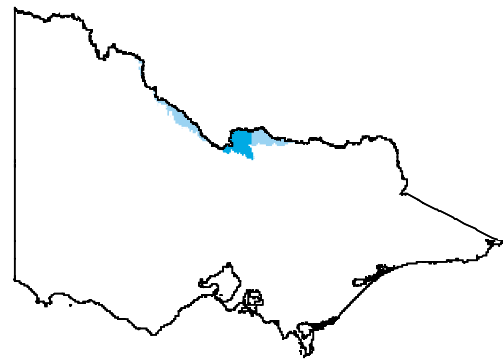
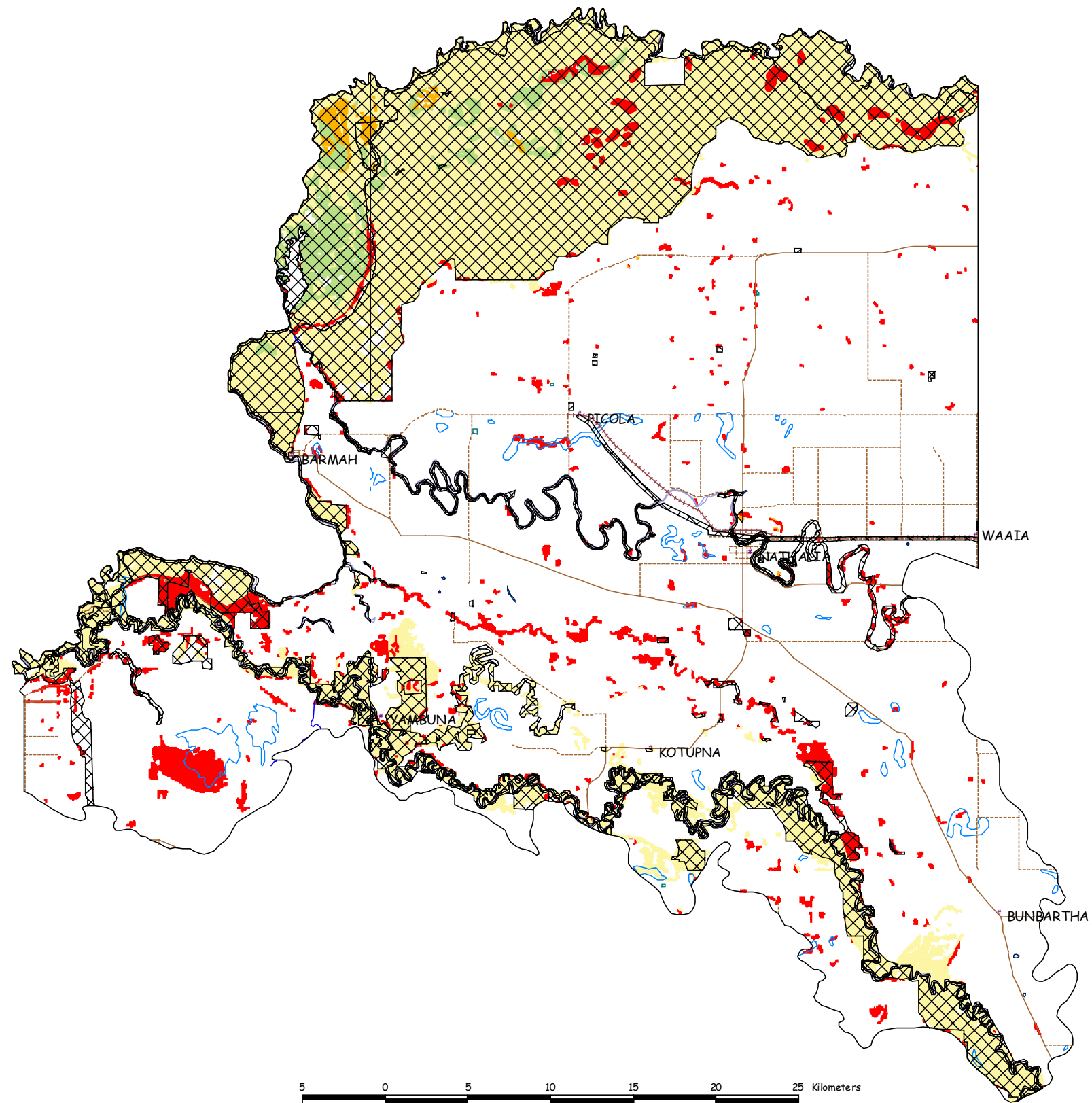
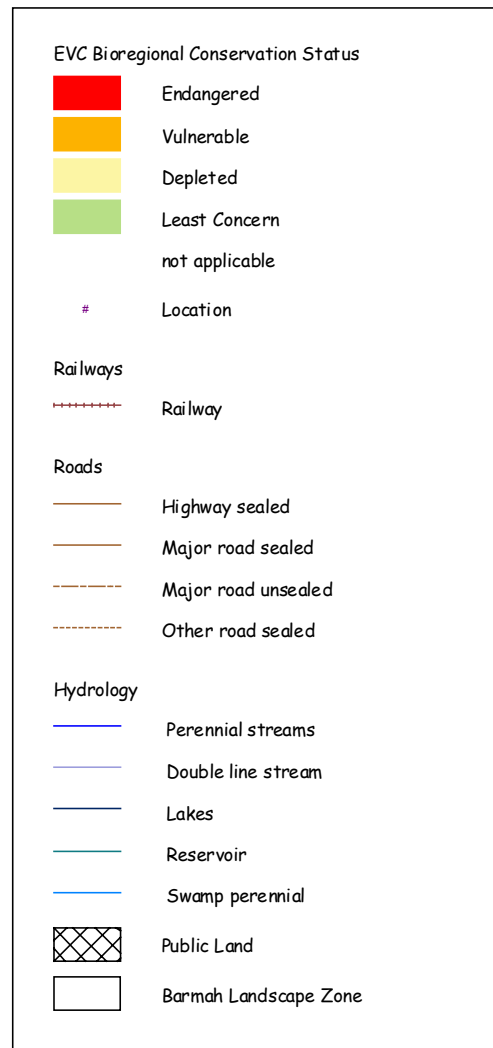
-  Highway sealed
-  Major road sealed
-  Major road unsealed
-  Other road sealed

Hydrology

-  Perennial streams
-  Double line stream
-  Lakes
-  Reservoir
-  Swamp perennial
-  Barmah Landscape Zone



Map 17. Current EVCs in the Barmah Landscape Zone, Shepparton Irrigation Region - North, Murray Fans bioregion



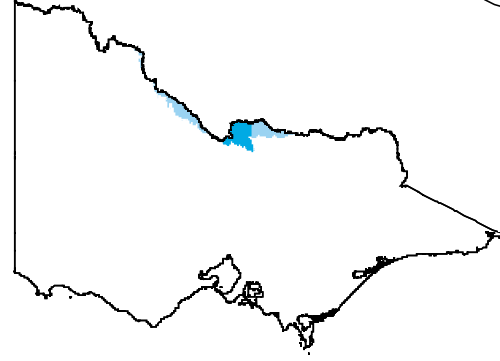
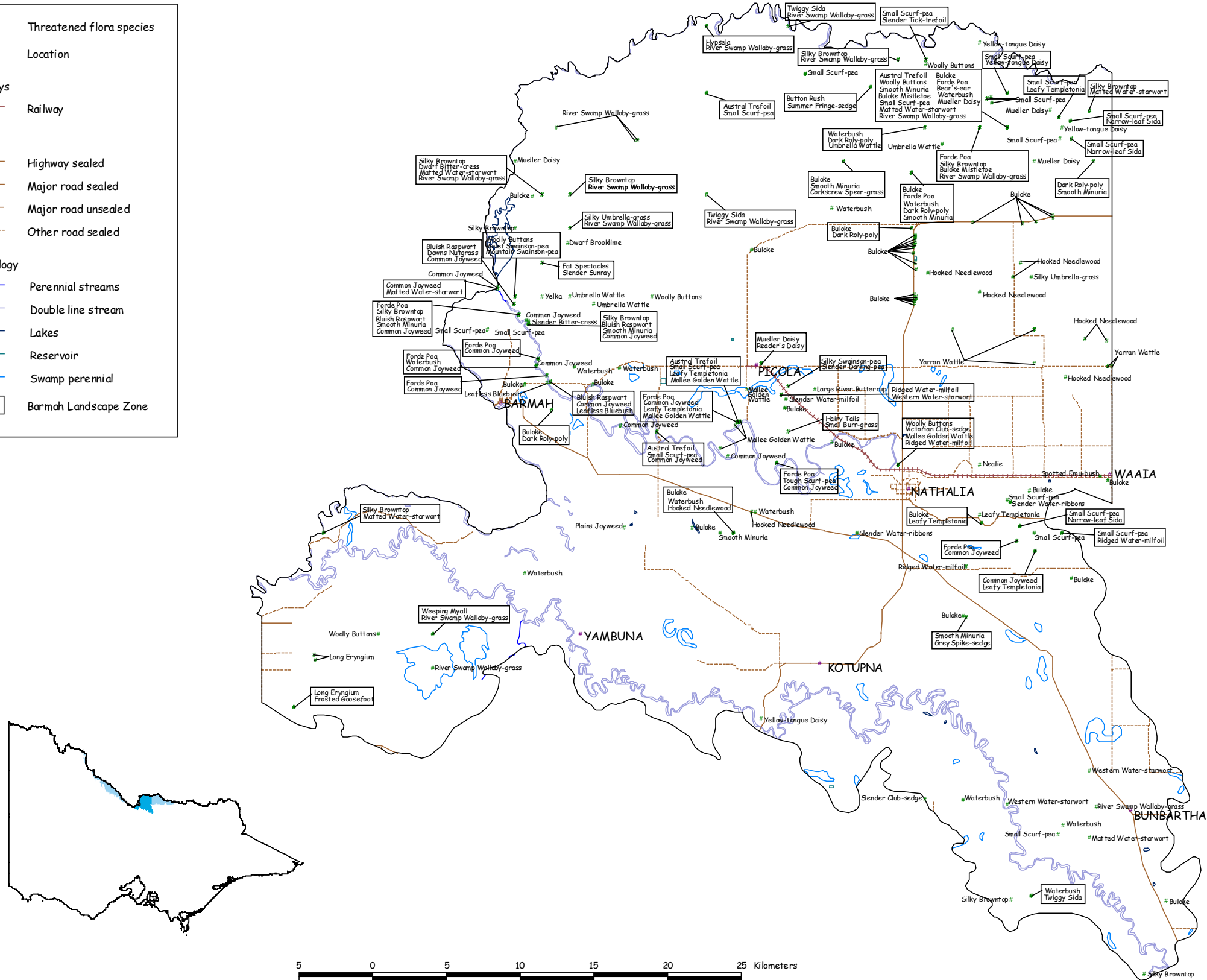
Map 18. Current EVC Conservation Significance and Public Land boundaries in the Barmah Landscape Zone, Shepparton Irrigation Region - North, Murray Fans bioregion

Threatened flora species
 * Location

Railways
 - - - - - Railway

Roads
 - Highway sealed
 - Major road sealed
 - Major road unsealed
 - Other road sealed

Hydrology
 - Perennial streams
 - Double line stream
 - Lakes
 - Reservoir
 - Swamp perennial
 Barmah Landscape Zone



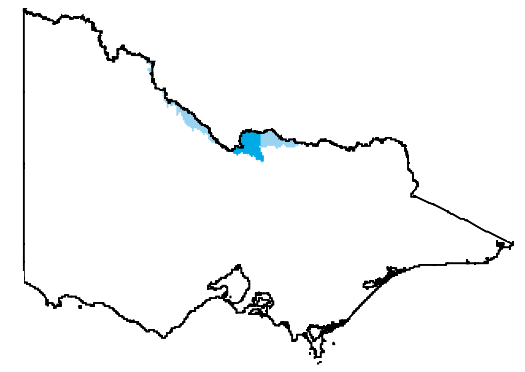
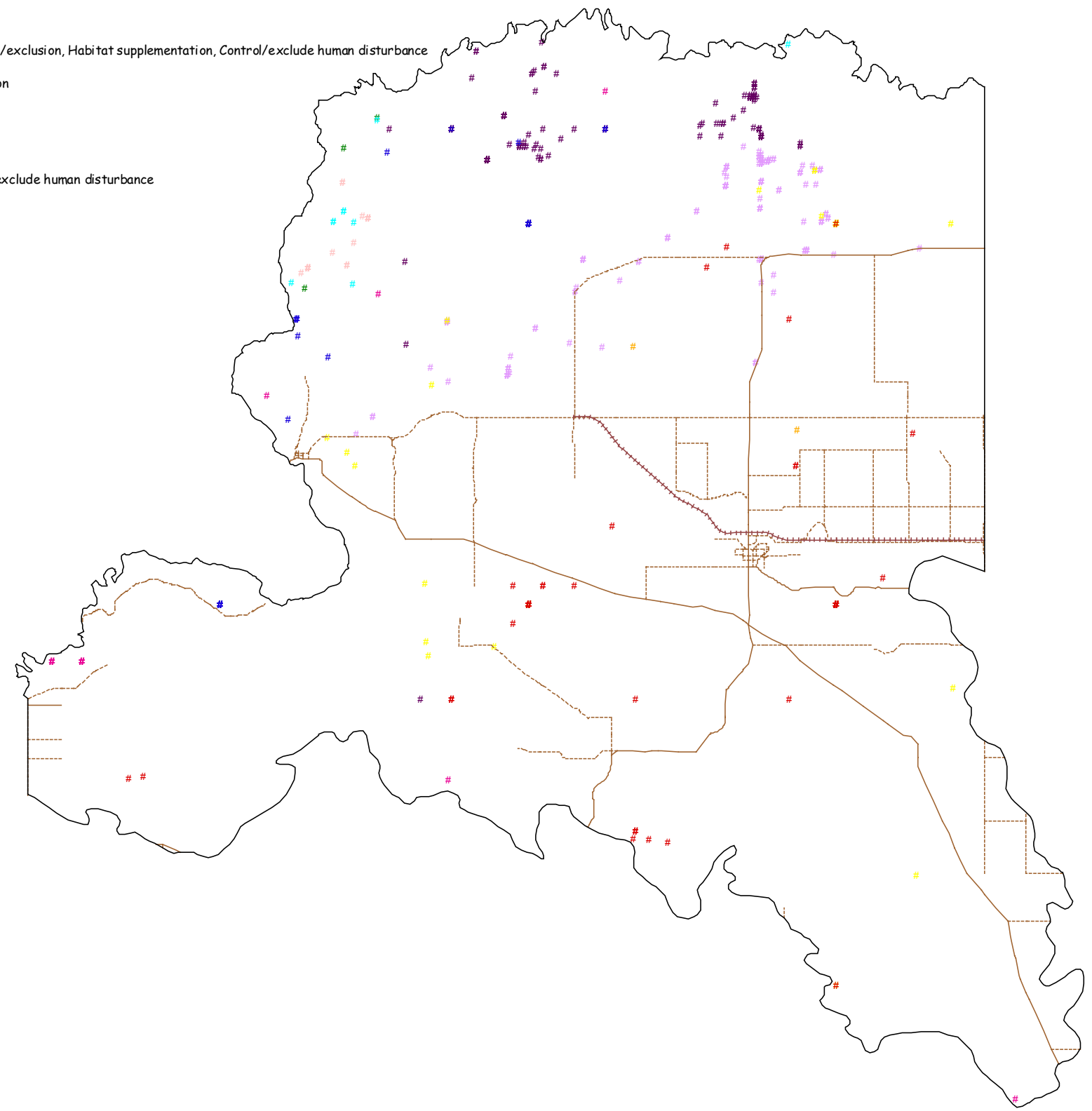
5 0 5 10 15 20 25 Kilometers



Map 20. Threatened Flora in the Barmah Landscape Zone, Shepparton Irrigation Region - North, Murray Fans bioregion

		Management Actions
#	Bush Stone-curlew - private	Predator control, Intended change to stocking, Fire control/exclusion, Habitat supplementation, Control/exclude human disturbance
#	Grey-crowned Babbler - private	Predator control, Grazing exclusion, Habitat supplementation
#	Giant Bullfrog - private	Education/interpretation, Enhanced flow regime
#	Great Egret - forest	Enhanced flow regimes
#	Great Egret - park	Enhanced flow regimes, Habitat supplementation, Control/exclude human disturbance
#	Little Bittern - park	Enhanced flow regimes, Habitat supplementation
#	Silver Perch - park	Reintroduction
#	Squirrel Glider - forest	Predator control
#	Superb Parrot - forest	Weed control
#	Superb Parrot - private	None recorded

- Railways
- Railway
- Roads
- Highway sealed
 - Major road sealed
 - Major road unsealed
 - Other road sealed
- Barmah Landscape Zone



Map 21. 1A Fauna and management actions in the Barmah Landscape Zone, Shepparton Irrigation Region - North, Murray Fans bioregion

- | Management Actions | | |
|--------------------|------------------------|---|
| # | Buloke Mistletoe | Environmental weeds, Habitat supplementation |
| # | Mueller Daisy | Stock control, Enhanced flow regimes, Habitat supplementation |
| # | Slender Darling-pea | Roos and Rabbits, Stock Control |
| # | Slender Sunray | No actions recorded |
| # | Small Scurf-pea | Stock control |
| # | Western Water-starwort | Environmental weeds |
| # | Yarran Wattle | Stock control |
| # | Location | |

Railways

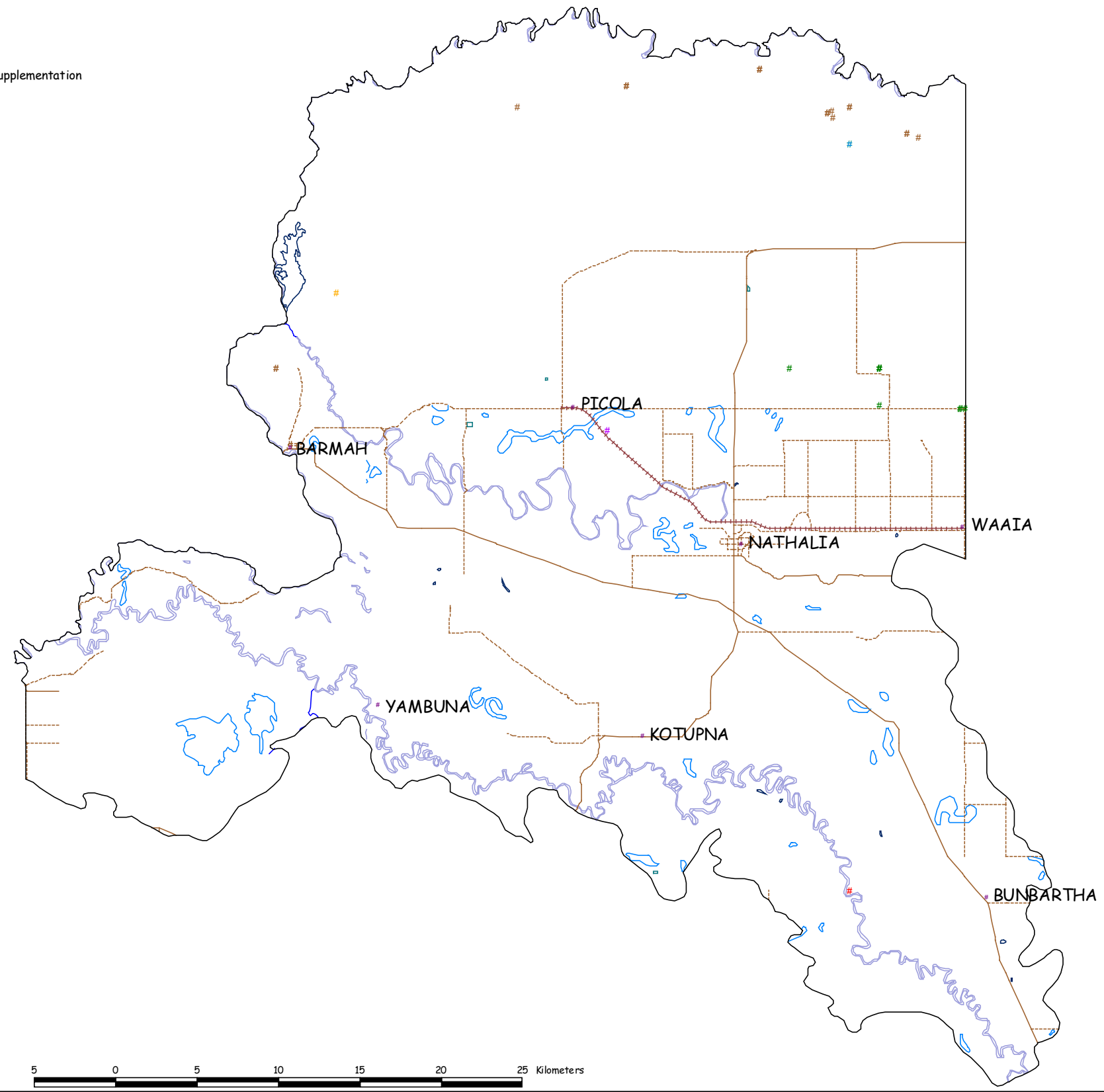
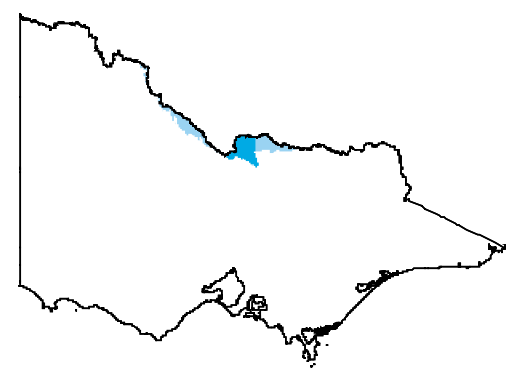
- Railway

Roads

- Highway sealed
- Major road sealed
- Major road unsealed
- Other road sealed

Hydrology

- Perennial streams
- Double line stream
- Lakes
- Reservoir
- Swamp perennial
- Barmah Landscape Zone



Note:
 1A flora and management actions have been taken from the Victorian Riverina Bioregional Network Analysis 1998, as there is no information available for flora in the Murray Fans at present.



Prepared by Christie Boyle, January 2003
 Base Data from DPI GIS Corporate Library
 © Department of Sustainability & Environment
 The State of Victoria, 2003.

Disclaimer:
 This map is made using the best available information. The creators of this map do not warrant that it is free of error and do not accept liability for loss arising from use of this product beyond its original purpose.



Map 22. 1A Flora and management actions in the Barmah Landscape Zone, Shepparton Irrigation Region - North, Murray Fans bioregion