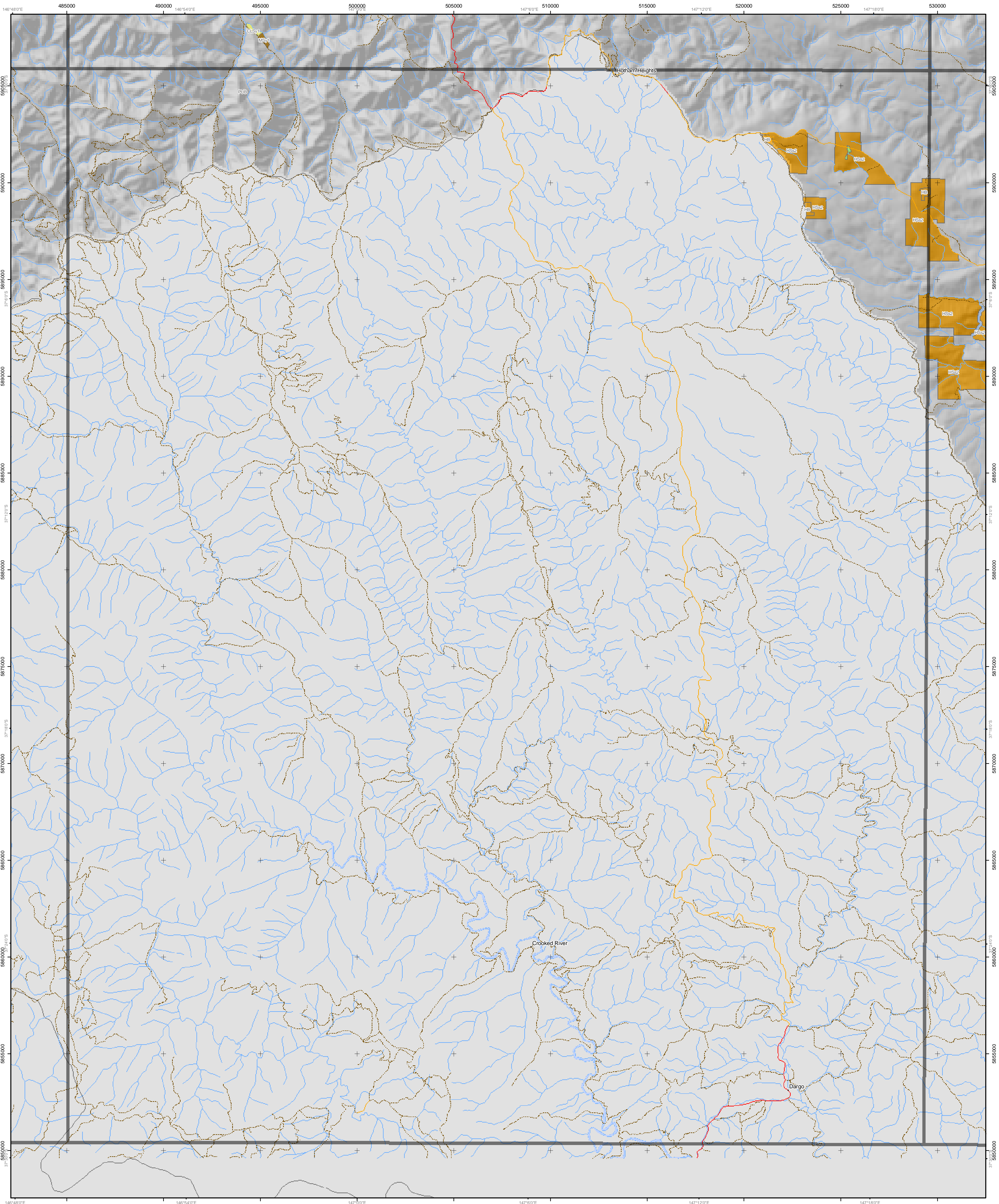


Soil-Landform Units of the North East CMA



Additional Information
 Base data sourced from the NRE Corporate Geospatial Data Library (1:100 000 roads, rivers and localities).
 Land Capability classes for agriculture have been derived from a combination of soil, landform and climate attributes. Consideration must also be given to remnant vegetation (highlighted here as an overlay) and flood prone areas before planning decisions are made in regard to land use and land management.
 This map has been produced as part of the published report 'A Land Resource Assessment of Freehold Land within the North East CMA'. This map may be of assistance to you but the State of Victoria and its employees do not guarantee that the map is without flaw of any kind or is wholly appropriate for your particular purposes and therefore disclaims all liability for any error, loss or other consequence which may arise from you relying on any information in this map.
 Map produced: June 2002
 Project file: w:\p_n\ne_n\l1\l1.mxd
 © The State of Victoria, Department of Natural Resources & Environment, 2002
Centre for Land Protection Research, Bendigo
 Cnr Midland Hwy & Taylor St
 Epsom, Victoria 3581
 (PO Box 3100 Bendigo Delivery Centre 3554)
 Ph: (03) 54 304444
 Fax: (03) 54 304304
 e-mail: cpl@nre.vic.gov.au

- ★ Soil sites
- ~ Freeway
- Highway
- Main road
- Minor road
- Other road
- Main river
- Other river
- Stream
- Water bodies
- Public land
- Softwood plantations on private land

Flood Plain	Alluvial	Colluvial	Low Hills	Hills	Mountains	Hill Plateaux
FLP1	ALF1	CLG1	LHG1	HB	MG	PHB
FLP2	ALF2	CLG2	LHG2	HG1	MGn	PHGn
FLP3	ALP1	CLGn	LHSy1	HG2	MSs1	PHSy
ALP2	CLs	LHSy2	HG3	MSs2	PMB	
ALP3	CLSy1	LHSy3	HG4	MSy1	PMSs	
ALP4	CLSy2	LHSy4	HGn	MSy2	PMSy	
ALP5	CLSy3		HSs1	MV1	PMV	
ALP6	CLSy4		HSs2	MV2		
CLSy5			HSs3			
CLV			HSy1			
			HSy2			
			HSy3			

