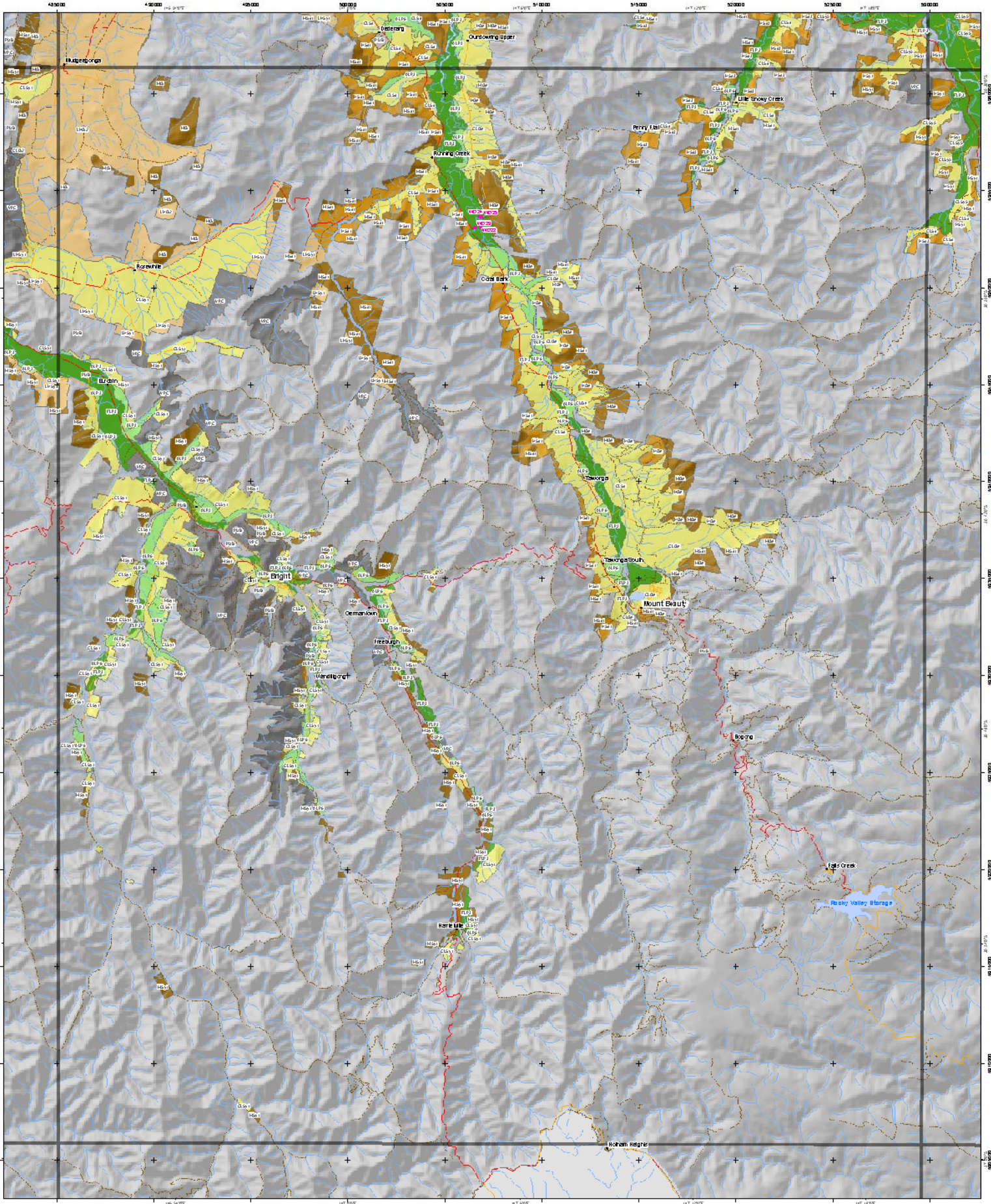


# Soil-Landform Units of the North East CMA



**Additional Information**  
 Base data derived from the Victorian Geospatial Data Library (1:100,000 scale), then reclassified.  
 Data for the Victorian Geospatial Data Library is derived from a range of sources, including aerial photography, satellite imagery, and ground-based surveys. The data is subject to change and is not guaranteed to be 100% accurate. The Victorian Geospatial Data Library is a joint venture between the Victorian Government and the private sector.  
 This map was prepared as part of the Victorian State of the Environment Report 2012. The map is for information only and should not be used for any purpose other than that intended. The Victorian Government is not responsible for any loss or damage arising from the use of this map. The Victorian Government is not responsible for any loss or damage arising from the use of this map.  
 Project Manager: [Name]  
 Department of Natural Resources and Environment, 2012  
 Contact: [Name]  
 Email: [Email]  
 Phone: [Phone]  
 Website: [Website]

<ul style="list-style-type: none"> <li>● Soil types</li> <li>— Freeway</li> <li>— Highway</li> <li>— Main road</li> <li>— Minor road</li> <li>— Other road</li> <li>— Main river</li> <li>— Other river</li> <li>— Stream</li> <li>— Water bodies</li> <li>— Public land</li> <li>— Shortwood plantation on private land</li> </ul>	<table border="0"> <tr> <td> <ul style="list-style-type: none"> <li>■ FLP 1</li> <li>■ FLP 2</li> <li>■ FLP 3</li> </ul> </td> <td> <ul style="list-style-type: none"> <li>■ ALF1</li> <li>■ ALF2</li> <li>■ ALP1</li> <li>■ ALP2</li> <li>■ ALP3</li> <li>■ ALP4</li> <li>■ ALP5</li> <li>■ ALP6</li> </ul> </td> <td> <ul style="list-style-type: none"> <li>■ CLG1</li> <li>■ CLG2</li> <li>■ CLG3</li> <li>■ CLS1</li> <li>■ CLS2</li> <li>■ CLS3</li> <li>■ CLS4</li> <li>■ CLS5</li> <li>■ CLV</li> </ul> </td> <td> <ul style="list-style-type: none"> <li>■ LHG1</li> <li>■ LHG2</li> <li>■ LHS1</li> <li>■ LHS2</li> <li>■ LHS3</li> <li>■ LHS4</li> <li>■ LHS5</li> <li>■ LHS6</li> <li>■ LHS7</li> <li>■ LHS8</li> <li>■ LHS9</li> <li>■ LHS10</li> <li>■ LHS11</li> <li>■ LHS12</li> <li>■ LHS13</li> <li>■ LHS14</li> <li>■ LHS15</li> <li>■ LHS16</li> <li>■ LHS17</li> <li>■ LHS18</li> <li>■ LHS19</li> <li>■ LHS20</li> </ul> </td> <td> <ul style="list-style-type: none"> <li>■ HB</li> <li>■ HG1</li> <li>■ HG2</li> <li>■ HG3</li> <li>■ HG4</li> <li>■ HG5</li> <li>■ HS1</li> <li>■ HS2</li> <li>■ HS3</li> <li>■ HS4</li> <li>■ HS5</li> <li>■ HS6</li> <li>■ HS7</li> <li>■ HS8</li> <li>■ HS9</li> <li>■ HS10</li> <li>■ HS11</li> <li>■ HS12</li> <li>■ HS13</li> </ul> </td> <td> <ul style="list-style-type: none"> <li>■ MH</li> <li>■ MSH1</li> <li>■ MSH2</li> <li>■ MSH3</li> <li>■ MSH4</li> <li>■ MSH5</li> <li>■ MSH6</li> <li>■ MSH7</li> <li>■ MSH8</li> <li>■ MSH9</li> <li>■ MSH10</li> <li>■ MSH11</li> <li>■ MSH12</li> <li>■ MSH13</li> <li>■ MSH14</li> <li>■ MSH15</li> <li>■ MSH16</li> <li>■ MSH17</li> <li>■ MSH18</li> <li>■ MSH19</li> <li>■ MSH20</li> </ul> </td> <td> <ul style="list-style-type: none"> <li>■ PHB</li> <li>■ PHG1</li> <li>■ PHG2</li> <li>■ PHG3</li> <li>■ PHG4</li> <li>■ PHG5</li> <li>■ PHG6</li> <li>■ PHG7</li> <li>■ PHG8</li> <li>■ PHG9</li> <li>■ PHG10</li> <li>■ PHG11</li> <li>■ PHG12</li> <li>■ PHG13</li> <li>■ PHG14</li> <li>■ PHG15</li> <li>■ PHG16</li> <li>■ PHG17</li> <li>■ PHG18</li> <li>■ PHG19</li> <li>■ PHG20</li> </ul> </td> </tr> </table>	<ul style="list-style-type: none"> <li>■ FLP 1</li> <li>■ FLP 2</li> <li>■ FLP 3</li> </ul>	<ul style="list-style-type: none"> <li>■ ALF1</li> <li>■ ALF2</li> <li>■ ALP1</li> <li>■ ALP2</li> <li>■ ALP3</li> <li>■ ALP4</li> <li>■ ALP5</li> <li>■ ALP6</li> </ul>	<ul style="list-style-type: none"> <li>■ CLG1</li> <li>■ CLG2</li> <li>■ CLG3</li> <li>■ CLS1</li> <li>■ CLS2</li> <li>■ CLS3</li> <li>■ CLS4</li> <li>■ CLS5</li> <li>■ CLV</li> </ul>	<ul style="list-style-type: none"> <li>■ LHG1</li> <li>■ LHG2</li> <li>■ LHS1</li> <li>■ LHS2</li> <li>■ LHS3</li> <li>■ LHS4</li> <li>■ LHS5</li> <li>■ LHS6</li> <li>■ LHS7</li> <li>■ LHS8</li> <li>■ LHS9</li> <li>■ LHS10</li> <li>■ LHS11</li> <li>■ LHS12</li> <li>■ LHS13</li> <li>■ LHS14</li> <li>■ LHS15</li> <li>■ LHS16</li> <li>■ LHS17</li> <li>■ LHS18</li> <li>■ LHS19</li> <li>■ LHS20</li> </ul>	<ul style="list-style-type: none"> <li>■ HB</li> <li>■ HG1</li> <li>■ HG2</li> <li>■ HG3</li> <li>■ HG4</li> <li>■ HG5</li> <li>■ HS1</li> <li>■ HS2</li> <li>■ HS3</li> <li>■ HS4</li> <li>■ HS5</li> <li>■ HS6</li> <li>■ HS7</li> <li>■ HS8</li> <li>■ HS9</li> <li>■ HS10</li> <li>■ HS11</li> <li>■ HS12</li> <li>■ HS13</li> </ul>	<ul style="list-style-type: none"> <li>■ MH</li> <li>■ MSH1</li> <li>■ MSH2</li> <li>■ MSH3</li> <li>■ MSH4</li> <li>■ MSH5</li> <li>■ MSH6</li> <li>■ MSH7</li> <li>■ MSH8</li> <li>■ MSH9</li> <li>■ MSH10</li> <li>■ MSH11</li> <li>■ MSH12</li> <li>■ MSH13</li> <li>■ MSH14</li> <li>■ MSH15</li> <li>■ MSH16</li> <li>■ MSH17</li> <li>■ MSH18</li> <li>■ MSH19</li> <li>■ MSH20</li> </ul>	<ul style="list-style-type: none"> <li>■ PHB</li> <li>■ PHG1</li> <li>■ PHG2</li> <li>■ PHG3</li> <li>■ PHG4</li> <li>■ PHG5</li> <li>■ PHG6</li> <li>■ PHG7</li> <li>■ PHG8</li> <li>■ PHG9</li> <li>■ PHG10</li> <li>■ PHG11</li> <li>■ PHG12</li> <li>■ PHG13</li> <li>■ PHG14</li> <li>■ PHG15</li> <li>■ PHG16</li> <li>■ PHG17</li> <li>■ PHG18</li> <li>■ PHG19</li> <li>■ PHG20</li> </ul>
<ul style="list-style-type: none"> <li>■ FLP 1</li> <li>■ FLP 2</li> <li>■ FLP 3</li> </ul>	<ul style="list-style-type: none"> <li>■ ALF1</li> <li>■ ALF2</li> <li>■ ALP1</li> <li>■ ALP2</li> <li>■ ALP3</li> <li>■ ALP4</li> <li>■ ALP5</li> <li>■ ALP6</li> </ul>	<ul style="list-style-type: none"> <li>■ CLG1</li> <li>■ CLG2</li> <li>■ CLG3</li> <li>■ CLS1</li> <li>■ CLS2</li> <li>■ CLS3</li> <li>■ CLS4</li> <li>■ CLS5</li> <li>■ CLV</li> </ul>	<ul style="list-style-type: none"> <li>■ LHG1</li> <li>■ LHG2</li> <li>■ LHS1</li> <li>■ LHS2</li> <li>■ LHS3</li> <li>■ LHS4</li> <li>■ LHS5</li> <li>■ LHS6</li> <li>■ LHS7</li> <li>■ LHS8</li> <li>■ LHS9</li> <li>■ LHS10</li> <li>■ LHS11</li> <li>■ LHS12</li> <li>■ LHS13</li> <li>■ LHS14</li> <li>■ LHS15</li> <li>■ LHS16</li> <li>■ LHS17</li> <li>■ LHS18</li> <li>■ LHS19</li> <li>■ LHS20</li> </ul>	<ul style="list-style-type: none"> <li>■ HB</li> <li>■ HG1</li> <li>■ HG2</li> <li>■ HG3</li> <li>■ HG4</li> <li>■ HG5</li> <li>■ HS1</li> <li>■ HS2</li> <li>■ HS3</li> <li>■ HS4</li> <li>■ HS5</li> <li>■ HS6</li> <li>■ HS7</li> <li>■ HS8</li> <li>■ HS9</li> <li>■ HS10</li> <li>■ HS11</li> <li>■ HS12</li> <li>■ HS13</li> </ul>	<ul style="list-style-type: none"> <li>■ MH</li> <li>■ MSH1</li> <li>■ MSH2</li> <li>■ MSH3</li> <li>■ MSH4</li> <li>■ MSH5</li> <li>■ MSH6</li> <li>■ MSH7</li> <li>■ MSH8</li> <li>■ MSH9</li> <li>■ MSH10</li> <li>■ MSH11</li> <li>■ MSH12</li> <li>■ MSH13</li> <li>■ MSH14</li> <li>■ MSH15</li> <li>■ MSH16</li> <li>■ MSH17</li> <li>■ MSH18</li> <li>■ MSH19</li> <li>■ MSH20</li> </ul>	<ul style="list-style-type: none"> <li>■ PHB</li> <li>■ PHG1</li> <li>■ PHG2</li> <li>■ PHG3</li> <li>■ PHG4</li> <li>■ PHG5</li> <li>■ PHG6</li> <li>■ PHG7</li> <li>■ PHG8</li> <li>■ PHG9</li> <li>■ PHG10</li> <li>■ PHG11</li> <li>■ PHG12</li> <li>■ PHG13</li> <li>■ PHG14</li> <li>■ PHG15</li> <li>■ PHG16</li> <li>■ PHG17</li> <li>■ PHG18</li> <li>■ PHG19</li> <li>■ PHG20</li> </ul>		

SCALE 1:100 000

0 1 2 3 4 5 6 7 8 9 10  
Kilometres

© The State of Victoria, Department of Natural Resources and Environment, 2012  
 Data derived from the Victorian Geospatial Data Library (1:100,000 scale), then reclassified.  
 This map was prepared as part of the Victorian State of the Environment Report 2012. The map is for information only and should not be used for any purpose other than that intended. The Victorian Government is not responsible for any loss or damage arising from the use of this map.  
 Project Manager: [Name]  
 Department of Natural Resources and Environment, 2012  
 Contact: [Name]  
 Email: [Email]  
 Phone: [Phone]  
 Website: [Website]