

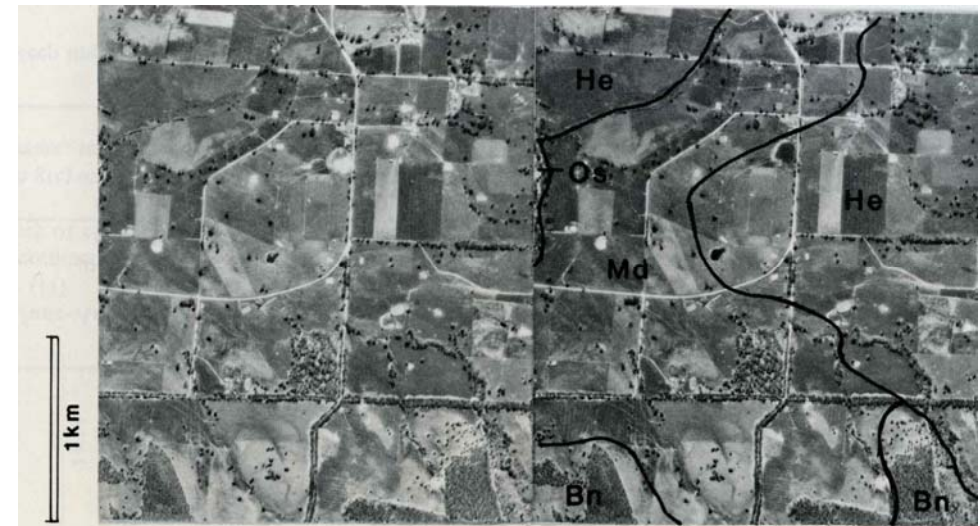
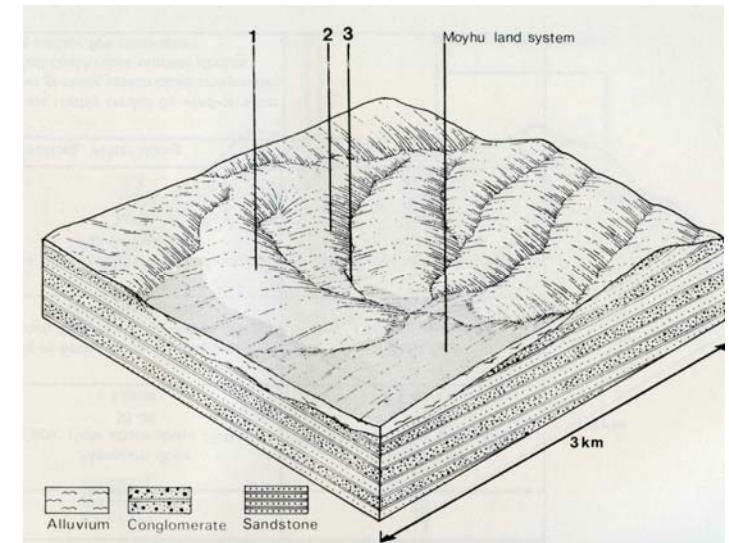
7.11 Hansonville land system

Although common to the north, this land system has only two relatively small extensions into the study area. It consists of low hills and associated gently sloping footslopes on Carboniferous sedimentary rocks. Annual rainfall is moderate; and summers are hot and winter cool.

The main soils are red duplex soils with smooth ped fabric, with some yellowish brown duplex soils. Weakly bleached reddish brown gradational soils occur on steeper slopes, and drainage lines have weakly bleached yellowish brown gradational soils.

While the native vegetation has been mostly cleared, its remnants indicate it was woodland of *Eucalyptus blakelyi* and *E. microcarpa*, with occasional *E. Albens*, *E. melliodora*, *E. bridgesiana* and *E. polyanthemos*.

The area is used for grazing. Hard-setting surface soils and relatively low rainfall are factors indicating a moderate erosion hazard. Compaction of surface soils or reduction of ground cover could result in excessive surface run-off and gully erosion of drainage lines.



HANSONVILLE LAND SYSTEM Area 11 sq km

CLIMATE Rainfall, mean (mm) Temperature, mean (°C) Seasonal growth limitations	Annual 700; lowest January (45), highest June (110) Annual 14; lowest July (7.5), highest January (21) Temperature – less than 10°C (av): June-August Precipitation – months less than 50% frequency of effective rain: December-January		
GEOLOGY Age, lithology	Lower Carboniferous conglomerate, sandstone, siltstone, shale		
PHYSIOGRAPHY Landscape Elevation range (m) Relative relief (m)	Low hills 200 – 300 20		
LAND COMPONENT Percentage of land system	1 70	2 10	3 20
PHYSIOGRAPHY Land form Position on land form Slope range (%) Slope shape	Hill Moderate, well-drained and upper slope 8-20 Convex	Hill Steep slope 20-25 Linear	Hill Lower, less steep slope and drainage line 5-8 Concave
NATIVE VEGETATION Structure Dominant species	Woodland <i>E. blakelyi, E. microcarpa, E. Albens, E. melliodora, E. bridgesiana, E. polyanthemos</i>		
SOIL Parent material Description Surface texture Permeability Depth (m)	<i>In situ</i> weathered rock, some colluvium of surface mantle Red duplex soils with smooth ped fabric Sandy loam Moderate 1.0	Colluvial mantle over weathered bedrock Weakly bleached reddish brown gradational soils Gravelly loam High 1.0	Alluvium-colluvium over weathered bedrock Yellowish brown duplex soils Sandy loam Low 2.0
LAND USE	Cleared; grazing, sheep and cattle		
SOIL DETERIORATION HAZARD Critical land features, processes, forms	Hard-setting surface soils; surface run-off may be increased if ground cover is significantly reduced; sheet erosion	Hard-setting surface soils; surface run-off may be increased if ground cover is significantly reduced; sheet erosion; may have low available water capacity if a high proportion of stone is present	Hard-setting surface soils; surface run-off may be increased if ground cover is significantly reduced; low permeability; gully erosion